

## Product datasheet for RC201357L4

### NALP2 (NLRP2) (NM\_017852) Human Tagged Lenti ORF Clone

#### Product data:

Product Type:	Expression Plasmids
Product Name:	NALP2 (NLRP2) (NM_017852) Human Tagged Lenti ORF Clone
Tag:	mGFP
Symbol:	NALP2
Synonyms:	CLR19.9; NALP2; NBS1; PAN1; PYPAF2
Mammalian Cell Selection:	Puromycin
Vector:	pLenti-C-mGFP-P2A-Puro (PS100093)
E. coli Selection:	Chloramphenicol (34 ug/mL)
ORF Nucleotide Sequence:	The ORF insert of this clone is exactly the same as(RC201357).
Restriction Sites:	SgfI-MluI
Cloning Scheme:	

Cloning sites used for ORF Shuttling:



\* The last codon before the Stop codon of the ORF.

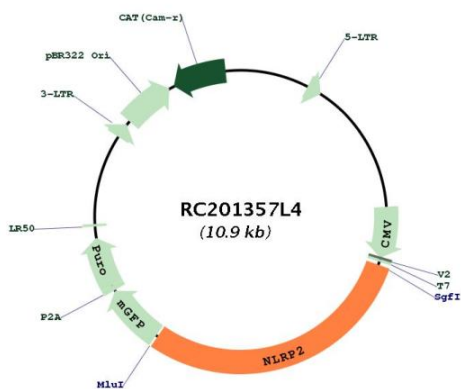
ACCN:	NM_017852
ORF Size:	3186 bp



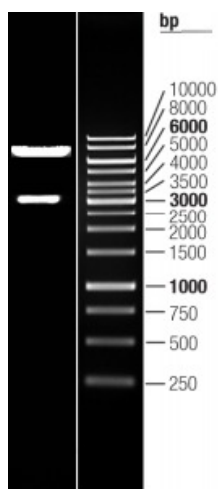
[View online »](#)

<b>OTI Disclaimer:</b>	The molecular sequence of this clone aligns with the gene accession number as a point of reference only. However, individual transcript sequences of the same gene can differ through naturally occurring variations (e.g. polymorphisms), each with its own valid existence. This clone is substantially in agreement with the reference, but a complete review of all prevailing variants is recommended prior to use. <a href="#">More info</a>
<b>OTI Annotation:</b>	This clone was engineered to express the complete ORF with an expression tag. Expression varies depending on the nature of the gene.
<b>Components:</b>	The ORF clone is ion-exchange column purified and shipped in a 2D barcoded Matrix tube containing 10ug of transfection-ready, dried plasmid DNA (reconstitute with 100 ul of water).
<b>Reconstitution Method:</b>	<ol style="list-style-type: none"><li>1. Centrifuge at 5,000xg for 5min.</li><li>2. Carefully open the tube and add 100ul of sterile water to dissolve the DNA.</li><li>3. Close the tube and incubate for 10 minutes at room temperature.</li><li>4. Briefly vortex the tube and then do a quick spin (less than 5000xg) to concentrate the liquid at the bottom.</li><li>5. Store the suspended plasmid at -20°C. The DNA is stable for at least one year from date of shipping when stored at -20°C.</li></ol>
<b>RefSeq:</b>	<a href="#">NM_017852.1</a>
<b>RefSeq Size:</b>	3531 bp
<b>RefSeq ORF:</b>	3189 bp
<b>Locus ID:</b>	55655
<b>UniProt ID:</b>	<a href="#">Q9NX02</a>
<b>Cytogenetics:</b>	19q13.42
<b>Domains:</b>	LRR, LRR_RI
<b>MW:</b>	120.3 kDa
<b>Gene Summary:</b>	This gene is a member of the nucleotide-binding and leucine-rich repeat receptor (NLR) family, and is predicted to contain an N-terminal pyrin effector domain (PYD), a centrally-located nucleotide-binding and oligomerization domain (NACHT) and C-terminal leucine-rich repeats (LRR). Members of this gene family are thought to be important regulators of immune responses. This gene product interacts with components of the I $\kappa$ B kinase (IKK) complex, and can regulate both caspase-1 and NF- $\kappa$ B (nuclear factor kappa-light-chain-enhancer of activated B cells) activity. The pyrin domain is necessary and sufficient for suppression of NF- $\kappa$ B activity. An allelic variant (rs147585490) has been found that is incapable of blocking the transcriptional activity of NF- $\kappa$ B. Alternative splicing results in multiple transcript variants encoding different isoforms. [provided by RefSeq, Dec 2016]

Product images:



Circular map for RC201357L4



Double digestion of RC201357L4 using SgfI and MluI