

Product datasheet for **RC201344**

OSBPL2 (NM_144498) Human Tagged ORF Clone

Product data:

Product Type:	Expression Plasmids
Product Name:	OSBPL2 (NM_144498) Human Tagged ORF Clone
Tag:	Myc-DDK
Symbol:	OSBPL2
Synonyms:	DFNA67; DNFA67; ORP-2; ORP2
Mammalian Cell Selection:	Neomycin
Vector:	pCMV6-Entry (PS100001)
E. coli Selection:	Kanamycin (25 ug/mL)



[View online »](#)

ORF Nucleotide Sequence:

>RC201344 ORF sequence
 Red=Cloning site Blue=ORF Green=Tags(s)

TTTTGTAATACGACTCACTATAGGGCGGCCGGAATTCGTCGACTGGATCCGGTACCGAGGAGATCTGCC
 GCC**GCGATCGCC**

ATGAACGGAGAGGAAGAATTCTTTGATGCCGTCACAGGCTTTGATTCTGATAACTCTTCTGGGAATTTT
 CAGAGGCAAATCAGAAAGTCACGGGAATGATTGACTTAGACACCAGCAAAAATAATAGGATTGGGAAAAC
 TGGGGAGAGGCCCTCTCAAGAGAACGGAATTCAGAAACACAGGACATCGCTGCCGGCTCCCATGTTGAGC
 AGAAGCGACTTCAGCGTGTGGACCATCCTGAAGAAGTGTGTTGGCCTGGAGCTGTCCAAGATCACGATGC
 CAATCGCCTTCAACGAGCCTCTGAGCTTCTGCAGCGGATCACGGAGTACATGGAGCACGTGTACCTCAT
 CCACAGGGCCTCCTGCCAGCCCCAGCCCCTGGAGAGGATGCAGTCTGTGGCTGCTTTTGTGTTTCGGCT
 GTGGCTTCCCAGTGGGAGAGGACCGGCAAACATTTAATCCACTCTTGGGAGAAACGTATGAATTAATCA
 GGAAGATTTAGGATTCAGATTTATATCGGAACAGGTCAGTACCACCCCCCATCAGTGCCTTCCACTC
 GGAAGTCTCAACCATGACTTCCCTGTTCCATGGCTCCATCTACCCCAAGCTCAAGTTCTGGGGCAAAGC
 GTGGAGGCGGAGCCCCGAGGCACCATCACCTGGAGCTGCTCAAACATAATGAAGCTACACCTGGACCA
 ACCCCACCTGCTGCGTCCACAACGTCATCATCGGGAAGCTGTGGATAGAGCAGTATGGGACAGTGGAGAT
 TTTAAACCACAGAAGTGGACATAAGTGTGTGCTTCACTTTAAACCGTGTGGATTATTTGGAAAAGAAGT
 CACAAGGTGGAAGGACACATTCAAGACAAAAACAAAAAGAAGCTCTTTATGATCTATGGCAAATGGACGG
 AATGTTTGTGGGCATAGATCCTGTTTCGATGAATCCTTCAAGAAGCAGGAGAGGAGAGGTGACCACCT
 GAGAAAGGCCAAGCTGGATGAAGACTCCGGGAAGGCTGACAGCGACGTGGCTGACGACGTGCCTGTGGCC
 CAGGAGACCGTGCAGGTCATTCTGCGCAAGCTGCTCTGGAGGATCAACACCCGGCCCCCAACTCTG
 CCCAGATGTATAATTTACCAGTTTCACTGTGAGCCTCAACGAGCTGGAGACAGGCATGGAGAAGCCCT
 GCCACCCACGGACTGCCGCTGCCCTGACATCCGCGGCATGGAGAATGGCAACATGGATCTGGCCAGC
 CAGGAGAAGGAGCGGCTGGAGGAGAAGCAGAGAGAAGCACGGAGGAGCGGGCCAAGGAGGAGGCAGAGT
 GGCAGACGAGGTGGTTCTACCCAGGCAATAACCCCTACACTGGGACCCCCGACTGGTTGTATGCAGGGGA
 TTACTTTGAGCGGAATTTCTCCGACTGCCAGATATCTAC

ACGCGTACGCGGCCGCTCGAGCAGAAACTCATCTCAGAAGAGGATCTGGCAGCAAATGATATCTGGATT
 ACAAGGATGACGACGATAAGGTTTAA

Protein Sequence:

>RC201344 protein sequence
 Red=Cloning site Green=Tags(s)

MNGEEFFDAVTGFDSNDSGEFSEANQKVTGMIDLDTSKNNRIGKTGERPSQENGIQKHRTSLPAPMFS
 RSDFSVWITLKKCVGLELSKITMPIAFNEPLSFLQRITHEMEHVYL IHRASCQPQLERMQSVAAFVSA
 VASQWERTGKPFNPLLGETYEL IREDLGFRFISEQVSHHPPISAFHSEGLNHDFLFHGSYIPKLFWGKS
 VEAEPRTITLELLKHNEAYTWNPTCCVHNVIIGKLWIEQYGTVEILNHRTGHKCVLHFPCGLFGKEL
 HKVEGHIQDKNKKL FMIYKWT ECLWGDVPSYESFKKQERRGDHLRKAKLDEDSGKADSDVADDVPVA
 QETVQVIPGSKLLWRINTRPPNSAQMYNFTSFTVSLNELETGMEKTL PPTDCRLRPDIRGMENMDLAS
 QEKERLEEKQREARRERAKEEA EWQTRWFYPGNPNYTGTPDWLYAGDYFERNFSDCPDIY

TRTRPLEQKLISEEDLAANDILDYKDDDDKV

Chromatograms:

https://cdn.origene.com/chromatograms/mk6408_h08.zip

Restriction Sites:

Sgfl-Mlul

Cloning Scheme:


ACCN: NM_144498

ORF Size: 1440 bp

OTI Disclaimer: The molecular sequence of this clone aligns with the gene accession number as a point of reference only. However, individual transcript sequences of the same gene can differ through naturally occurring variations (e.g. polymorphisms), each with its own valid existence. This clone is substantially in agreement with the reference, but a complete review of all prevailing variants is recommended prior to use. [More info](#)

OTI Annotation: This clone was engineered to express the complete ORF with an expression tag. Expression varies depending on the nature of the gene.

Components: The ORF clone is ion-exchange column purified and shipped in a 2D barcoded Matrix tube containing 10ug of transfection-ready, dried plasmid DNA (reconstitute with 100 ul of water).

- Reconstitution Method:**
1. Centrifuge at 5,000xg for 5min.
 2. Carefully open the tube and add 100ul of sterile water to dissolve the DNA.
 3. Close the tube and incubate for 10 minutes at room temperature.
 4. Briefly vortex the tube and then do a quick spin (less than 5000xg) to concentrate the liquid at the bottom.
 5. Store the suspended plasmid at -20°C. The DNA is stable for at least one year from date of shipping when stored at -20°C.

Note: Plasmids are not sterile. For experiments where strict sterility is required, filtration with 0.22um filter is required.

RefSeq: [NM_144498.4](#)

RefSeq Size: 4027 bp

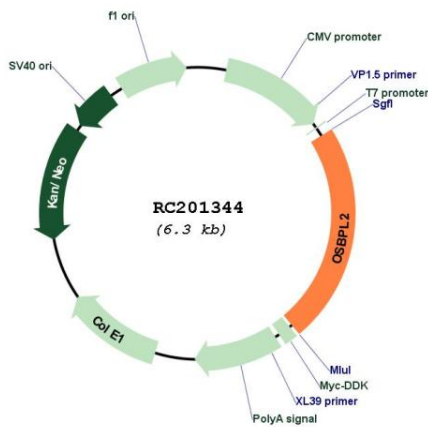
RefSeq ORF: 1443 bp

Locus ID: 9885

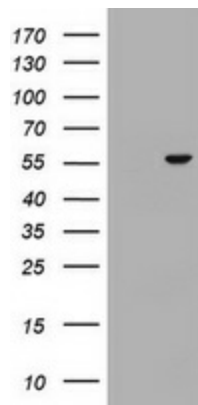
UniProt ID: [Q9H1P3](#)
Cytogenetics: 20q13.33
Domains: Oxysterol_BP
MW: 55.2 kDa

Gene Summary: This gene encodes a member of the oxysterol-binding protein (OSBP) family, a group of intracellular lipid receptors. Most members contain an N-terminal pleckstrin homology domain and a highly conserved C-terminal OSBP-like sterol-binding domain, although the encoded protein contains only the sterol-binding domain. In vitro studies have shown that the encoded protein can bind strongly to phosphatic acid and weakly to phosphatidylinositol 3-phosphate, but cannot bind to 25-hydroxycholesterol. The protein associates with the Golgi apparatus. Transcript variants encoding different isoforms have been described. [provided by RefSeq, Sep 2014]

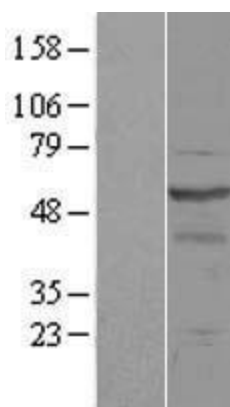
Product images:



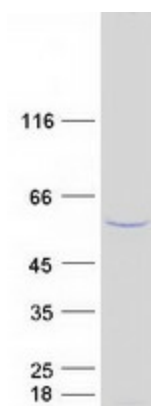
Circular map for RC201344



HEK293T cells were transfected with the pCMV6-ENTRY control (Cat# [PS100001], Left lane) or pCMV6-ENTRY OSBPL2 (Cat# RC201344, Right lane) cDNA for 48 hrs and lysed. Equivalent amounts of cell lysates (5 ug per lane) were separated by SDS-PAGE and immunoblotted with anti-OSBPL2 (Cat# [TA800553]). Positive lysates [LY408266] (100ug) and [LC408266] (20ug) can be purchased separately from OriGene.



Western blot validation of overexpression lysate (Cat# [LY408266]) using anti-DDK antibody (Cat# [TA50011-100]). Left: Cell lysates from untransfected HEK293T cells; Right: Cell lysates from HEK293T cells transfected with RC201344 using transfection reagent MegaTran 2.0 (Cat# [TT210002]).



Coomassie blue staining of purified OSBPL2 protein (Cat# [TP301344]). The protein was produced from HEK293T cells transfected with OSBPL2 cDNA clone (Cat# RC201344) using MegaTran 2.0 (Cat# [TT210002]).