

## Product datasheet for **RC201339**

### **TNIP2 (NM\_024309) Human Tagged ORF Clone**

#### **Product data:**

Product Type:	Expression Plasmids
Product Name:	TNIP2 (NM_024309) Human Tagged ORF Clone
Tag:	Myc-DDK
Symbol:	TNIP2
Synonyms:	ABIN2; FLIP1; KLIP
Mammalian Cell Selection:	Neomycin
Vector:	pCMV6-Entry (PS100001)
E. coli Selection:	Kanamycin (25 ug/mL)



[View online »](#)

**ORF Nucleotide Sequence:**

>RC201339 ORF sequence  
 Red=Cloning site Blue=ORF Green=Tags(s)

TTTTGTAATACGACTCACTATAGGGCGGCCGGAATTCGTCGACTGGATCCGGTACCGAGGAGATCTGCC  
 GCC**CGGATCGCC**

ATGTCCCGGGACCCGGGTGCGGCGCTGGGAGGAGGCCCGCGCGCAGCTGCCGCGCTCTGCACCCTGT  
 ACCACGAGGCCGGACAGCGGCTGCGCCGCTGCAGGACCAGCTCGCTGCCCGCGACGCCCTCATCGCTCG  
 CCTCCGCGCCCGCTGGCCGCGCTGGAGGGGACGCCGCGCCGTCCTAGTGAGCAGCTGCTGGAGCAG  
 GTTGCGCGCTTCCGGGAGCAGCTGCAAGGCAGGAGGGCGCGCCGAGGCCAGATGCGCCAGGAAA  
 TTGAGAGGCTGACTGAGCGACTAGAAGAAAAAGAGAGGGAGATGCAGCAGCTGCTGAGCCAGCCCCAACA  
 CGAGCGAGAGAAGGAAGTCCTGCTACGGAGGAGCATGGCAGAAGGGGAGCGGCCCGGGCCGCCAGT  
 GACGTCCTGTGCCGCTCCTTGGCCAACGAGACCCATCAGCTGCGGAGGACGCTGACCGCCACCGCCACA  
 TGTGTCAGCATCTGGCCAAGTGTCTGGATGAACGACAGCATGCACAAAGGAATGTGGGGGAGAGAAGTCC  
 TGACCAGTCGGAACACACAGATGGGCACACCTCTGTCCAGAGTGTATTGAGAAGTTGCAGGAAGAAAAT  
 CGACTGTTAAAACAGAAGGTGACTCACGTTGAAGACCTCAATGCCAAGTGGCAGCGCTACAACGCCAGCA  
 GGGACGAATACGTGAGGGGGCTCCATGCGCAGCTCAGGGGGTGCAGATCCCCACGAGCCCGAGCTGAT  
 GAGGAAGGAGATCTCCGGCTCAACAGACAGTTGGAAGAGAAAATAAATGACTGTGCCAAGTGAAGCAG  
 GAGCTGGCGGCCCTCCAGGACGGCCCGGGATGCTGCGTTGGAGCGGGTGCAGATGCTGGAACAGCAGATTC  
 TCGTTACAAGGATGACTTCATGTCAGAAAAGGGCCGATCGGGAACGGGCTCAAAGTAGGATTCAGAAGT  
 GGAGGAAAAGTGCCTCTTTGCTGCACCAGGTGCTCTGGAGACAGGATTCTCGAGAGCCAGACGCCGGC  
 CGGATTCACGCTGGGAGCAAACTGCCAAGTATTTGGCCGCCACGCATTAGAGCTTATGGTGCCTGGT  
 GCTGGAGGCTGGGACTGGTCCCAGCAGCCAGAACCCCTGCAGAGGGCGGGCATCCTGGCGCGTCCA  
 GAGAGGCCAGGGGACCTTCAGTGCCCTACTGCCTGCAGTGTTCAGTGACGAGCAAGGGGAAGAGCTC  
 CTAGGCATGTGGCCGAGTGTGCCAG

**ACGCGT**ACGCGGCCGCTCGAGCAGAACTCATCTCAGAAGAGGATCTGGCAGCAAATGATATCCTGGATT  
 ACAAGGATGACGACGATAAGGTTTAA

**Protein Sequence:**

>RC201339 protein sequence  
 Red=Cloning site Green=Tags(s)

MSRDPGSGGWEEAPRAAAALCTLYHEAGQRLRRLQDQLAARDAL IARLRARLAALEGDAAPSLVDALLEQ  
 VARFREQLRRQEGGAAEAQMRQEIERL TERLEEKEREMQQLLSQPHEREKEVLLRRSMAEGERARAAS  
 DVLCRSLANETHQLRRTL TATAHMCQHLAKCLDERQHAQRNVGERSPDQSEHTDGHTSVQSVIEKLQEEN  
 RLLKQKVTHVEDLNAKWQRYNASRDEYVRGLHAQLRGLQIPHEPELMRKEISRLNRQLEEKINDCAEVKQ  
 ELAASRTARDAALERVQMLEQQILAYKDDFMSEADRERASRIQEL EEEKVASLLHQVSWRQDSREPDAG  
 RIHAGSKTAKYLAADALELMVPGGWRPGTGSQQPEPPAEGGHPGAVQRGQGLQCPHCLQCF SDEQGEEL  
 LRHVAECCQ

**TR**TRPLEQKLISEEDLAANDILDYKDDDDKV

**Chromatograms:**

[https://cdn.origene.com/chromatograms/mk6085\\_c09.zip](https://cdn.origene.com/chromatograms/mk6085_c09.zip)

**Restriction Sites:**

Sgfl-Mlul

**Cloning Scheme:**


**ACCN:** NM\_024309

**ORF Size:** 1287 bp

**OTI Disclaimer:** The molecular sequence of this clone aligns with the gene accession number as a point of reference only. However, individual transcript sequences of the same gene can differ through naturally occurring variations (e.g. polymorphisms), each with its own valid existence. This clone is substantially in agreement with the reference, but a complete review of all prevailing variants is recommended prior to use. [More info](#)

**OTI Annotation:** This clone was engineered to express the complete ORF with an expression tag. Expression varies depending on the nature of the gene.

**Components:** The ORF clone is ion-exchange column purified and shipped in a 2D barcoded Matrix tube containing 10ug of transfection-ready, dried plasmid DNA (reconstitute with 100 ul of water).

- Reconstitution Method:**
1. Centrifuge at 5,000xg for 5min.
  2. Carefully open the tube and add 100ul of sterile water to dissolve the DNA.
  3. Close the tube and incubate for 10 minutes at room temperature.
  4. Briefly vortex the tube and then do a quick spin (less than 5000xg) to concentrate the liquid at the bottom.
  5. Store the suspended plasmid at -20°C. The DNA is stable for at least one year from date of shipping when stored at -20°C.

**Note:** Plasmids are not sterile. For experiments where strict sterility is required, filtration with 0.22um filter is required.

**RefSeq:** [NM\\_024309.2](#), [NP\\_077285.2](#)

**RefSeq Size:** 1993 bp

**RefSeq ORF:** 1290 bp

**Locus ID:** 79155

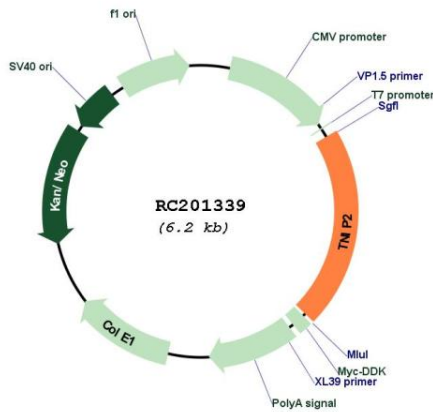
UniProt ID: [Q8NFZ5](#)

Cytogenetics: 4p16.3

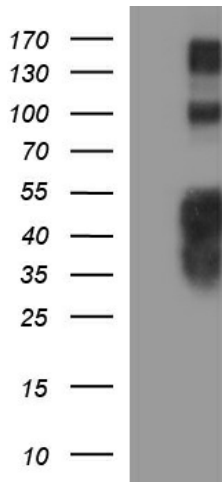
MW: 48.7 kDa

**Gene Summary:** This gene encodes a protein which acts as an inhibitor of NFkappaB activation. The encoded protein is also involved in MAP/ERK signaling pathway in specific cell types. It may be involved in apoptosis of endothelial cells. Alternative splicing results in multiple transcript variants. A pseudogene related to this gene is located on the X chromosome.[provided by RefSeq, May 2014]

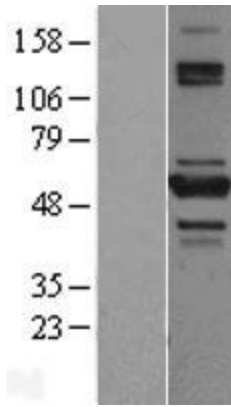
**Product images:**



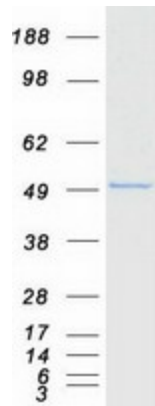
Circular map for RC201339



HEK293T cells were transfected with the pCMV6-ENTRY control (Cat# [PS100001], Left lane) or pCMV6-ENTRY TNIP2 (Cat# RC201339, Right lane) cDNA for 48 hrs and lysed. Equivalent amounts of cell lysates (5 ug per lane) were separated by SDS-PAGE and immunoblotted with anti-TNIP2 (Cat# [TA590455]). Positive lysates [LY411328] (100ug) and [LC411328] (20ug) can be purchased separately from OriGene.



Western blot validation of overexpression lysate (Cat# [LY411328]) using anti-DDK antibody (Cat# [TA50011-100]). Left: Cell lysates from untransfected HEK293T cells; Right: Cell lysates from HEK293T cells transfected with RC201339 using transfection reagent MegaTran 2.0 (Cat# [TT210002]).



Coomassie blue staining of purified TNIP2 protein (Cat# [TP301339]). The protein was produced from HEK293T cells transfected with TNIP2 cDNA clone (Cat# RC201339) using MegaTran 2.0 (Cat# [TT210002]).