

Product datasheet for RC201337

IFT20 (NM_174887) Human Tagged ORF Clone

Product data:

Product Type:	Expression Plasmids
Product Name:	IFT20 (NM_174887) Human Tagged ORF Clone
Tag:	Myc-DDK
Symbol:	IFT20
Mammalian Cell Selection:	Neomycin
Vector:	pCMV6-Entry (PS100001)
E. coli Selection:	Kanamycin (25 ug/mL)
ORF Nucleotide Sequence:	>RC201337 ORF sequence Red=Cloning site Blue=ORF Green=Tags(s)

TTTTGTAATACGACTCACTATAGGGCGGCCGGAATTCGTCGACTGGATCCGGTACCGAGGAGATCTGCC
GCC**CGATCGCC**

ATGGCCAAGGACATCCTGGGTGAAGCAGGGCTACACTTTGATGAACTGAACAAGCTGAGGGTGTGGACC
CAGAGGTTACCCAGCAGACCATAGAGCTGAAGGAAGAGTGCAAAGACTTTGTGGACAAAATTGGCCAGTT
TCAGAAAAATAGTTGGTGGTTTAATTGAGCTTGTGATCAACTTGCAAAAGAAGCAGAAAAATGAAAAGATG
AAGAGTCTTGCTGTGTACCCAGGCTGGAGTGCCTGGTGAATCTCGGCTCACTGCAAGCTCTGCCTCT
CAGATTC AAGCGATTCTCCACCTCACCTCCCGAGTAGGTGGGACTACAGGCCATCGGTGCTCGGAAT
TGCTCAAATCTATAGCAAAGCAGAGAGAAGCTCAACAGCAGCAACTTCAAGCCCTAATAGCAGAAAAGAA
AATGCAGCTAGAAAGGTATCGGGT

ACGCGTACGCGGCCGCTCGAGCAGAACTCATCTCAGAAGAGGATCTGGCAGCAAATGATATCCTGGATT
ACAAGGATGACGACGATAAGGTTTAA

Protein Sequence:	>RC201337 protein sequence Red=Cloning site Green=Tags(s)
-------------------	--

MAKDILGEAGLHFDELNKLRLVDPEVTQQTIELKEECKDFVDKIGQFQKIVGGLIELVDQLAKEAENEK
KSLAVSPRLECTGAISAHCKLCLSDSSDPTSPSRVGGTGHRCSELAQIYKAERSSTAATSSPNSRKE
NAARKVSG

TRTRPLEQKLI SEEDLAANDILDYKDDDDKV

Chromatograms:	https://cdn.origene.com/chromatograms/mk6390_h11.zip
----------------	---

Restriction Sites:	Sgfl-Mlul
--------------------	-----------



[View online »](#)

Cloning Scheme:


ACCN: NM_174887

ORF Size: 444 bp

OTI Disclaimer: The molecular sequence of this clone aligns with the gene accession number as a point of reference only. However, individual transcript sequences of the same gene can differ through naturally occurring variations (e.g. polymorphisms), each with its own valid existence. This clone is substantially in agreement with the reference, but a complete review of all prevailing variants is recommended prior to use. [More info](#)

OTI Annotation: This clone was engineered to express the complete ORF with an expression tag. Expression varies depending on the nature of the gene.

Components: The ORF clone is ion-exchange column purified and shipped in a 2D barcoded Matrix tube containing 10ug of transfection-ready, dried plasmid DNA (reconstitute with 100 ul of water).

- Reconstitution Method:**
1. Centrifuge at 5,000xg for 5min.
 2. Carefully open the tube and add 100ul of sterile water to dissolve the DNA.
 3. Close the tube and incubate for 10 minutes at room temperature.
 4. Briefly vortex the tube and then do a quick spin (less than 5000xg) to concentrate the liquid at the bottom.
 5. Store the suspended plasmid at -20°C. The DNA is stable for at least one year from date of shipping when stored at -20°C.

RefSeq: [NM_174887.4](#)

RefSeq Size: 1006 bp

RefSeq ORF: 447 bp

Locus ID: 90410

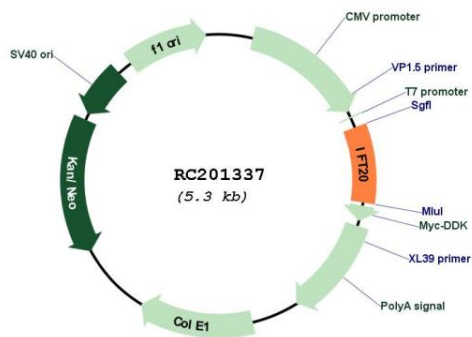
UniProt ID: [Q8IY31](#)

Cytogenetics: 17q11.2

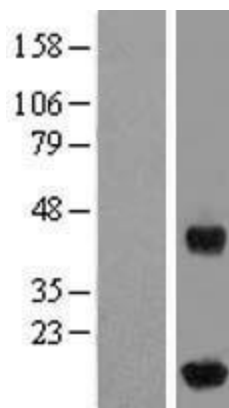
MW: 16 kDa

Gene Summary: This gene encodes an intraflagellar transport protein important for intracellular transport. The encoded protein forms part of a complex involved in trafficking of proteins from the Golgi body, including recycling of immune signalling components (Finetti et al., PubMed: 19855387). This gene is part of a complex set of sense-antisense loci that may be co-regulated. Alternatively spliced transcript variants encoding multiple isoforms have been observed for this gene. A pseudogene of this gene is located on the long arm of chromosome 14.[provided by RefSeq, Jun 2012]

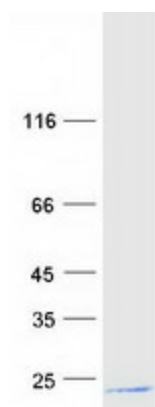
Product images:



Circular map for RC201337



Western blot validation of overexpression lysate (Cat# [LY406292]) using anti-DDK antibody (Cat# [TA50011-100]). Left: Cell lysates from untransfected HEK293T cells; Right: Cell lysates from HEK293T cells transfected with RC201337 using transfection reagent MegaTran 2.0 (Cat# [TT210002]).



Coomassie blue staining of purified IFT20 protein (Cat# [TP301337]). The protein was produced from HEK293T cells transfected with IFT20 cDNA clone (Cat# RC201337) using MegaTran 2.0 (Cat# [TT210002]).