

Product datasheet for RC201335

ISCA1 (NM_030940) Human Tagged ORF Clone

Product data:

Product Type: Expression Plasmids
Product Name: ISCA1 (NM_030940) Human Tagged ORF Clone
Tag: Myc-DDK
Symbol: ISCA1
Synonyms: HBLD2; hIscA; ISA1; MMDS5
Mammalian Cell Selection: Neomycin
Vector: pCMV6-Entry (PS100001)
E. coli Selection: Kanamycin (25 ug/mL)
ORF Nucleotide Sequence: >RC201335 ORF sequence
Red=Cloning site Blue=ORF Green=Tags(s)

TTTTGTAATACGACTCACTATAGGGCGGCCGGAATTCGTCGACTGGATCCGGTACCGAGGAGATCTGCC
GCC**CGATCGCC**

ATGTCGGCTTCTTAGTCCGGGCAACTGTCCGGGCTGTGAGCAAGAGGAAGCTGCAGCCACCCGGGCAG
CCCTCACCTGACACCTCAGCAGTAAACAAGATAAAACAACCTCTTAAAGATAAGCCTGAGCATGTAGG
TGTAAGTTGGTGTCCGAACCAGGGGCTGTAATGGCCTTTCTTATACTCTAGAATATACAAAGACAAA
GGAGATTCTGATGAAGAAGTTATTCAAGATGGAGTCAGAGTATTCATCGAAAAGAAAGCACAGCTAACAC
TTTTAGGAACAGAAATGGACTATGTTGAAGACAAATTATCCAGTGAGTTTGTGTTCAATAACCCAAACAT
CAAAGGGACTTGTGGCTGTGGAGAAAGCTTTAATATT

ACGCGTACGCGGCCGCTCGAGCAGAAACTCATCTCAGAAGAGGATCTGGCAGCAAATGATATCCTGGATT
ACAAGGATGACGACGATAAGGTTTAA

Protein Sequence: >RC201335 protein sequence
Red=Cloning site Green=Tags(s)
MSASLVRATVRAVSKRKLQPTRALTLTPSAVNKIKQLLKDKPEHVGKVGVRTRGCNGLSYTLEYTKTK
GDSDEEVIQDGVRFIEKKAQLTLGTEM DYVEDKLSSEFVFNNPNIKGTGCGESFNI

TRTRPLEQKLISEEDLAANDILDYKDDDDKV

Chromatograms: https://cdn.origene.com/chromatograms/mk6390_c04.zip

Restriction Sites: SgfI-MluI



[View online »](#)

Cloning Scheme:


ACCN: NM_030940

ORF Size: 387 bp

OTI Disclaimer: The molecular sequence of this clone aligns with the gene accession number as a point of reference only. However, individual transcript sequences of the same gene can differ through naturally occurring variations (e.g. polymorphisms), each with its own valid existence. This clone is substantially in agreement with the reference, but a complete review of all prevailing variants is recommended prior to use. [More info](#)

OTI Annotation: This clone was engineered to express the complete ORF with an expression tag. Expression varies depending on the nature of the gene.

Components: The ORF clone is ion-exchange column purified and shipped in a 2D barcoded Matrix tube containing 10ug of transfection-ready, dried plasmid DNA (reconstitute with 100 ul of water).

- Reconstitution Method:**
1. Centrifuge at 5,000xg for 5min.
 2. Carefully open the tube and add 100ul of sterile water to dissolve the DNA.
 3. Close the tube and incubate for 10 minutes at room temperature.
 4. Briefly vortex the tube and then do a quick spin (less than 5000xg) to concentrate the liquid at the bottom.
 5. Store the suspended plasmid at -20°C. The DNA is stable for at least one year from date of shipping when stored at -20°C.

Note: Plasmids are not sterile. For experiments where strict sterility is required, filtration with 0.22um filter is required.

RefSeq: [NM_030940.4](#)

RefSeq Size: 2012 bp

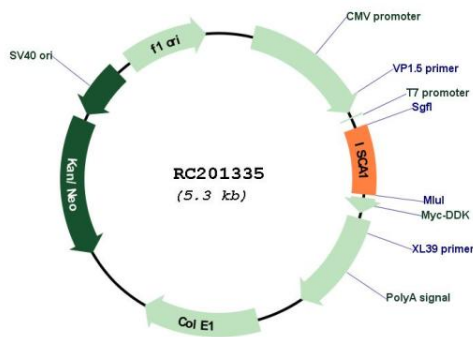
RefSeq ORF: 390 bp

Locus ID: 81689
UniProt ID: [Q9BUE6](#)
Cytogenetics: 9q21.33

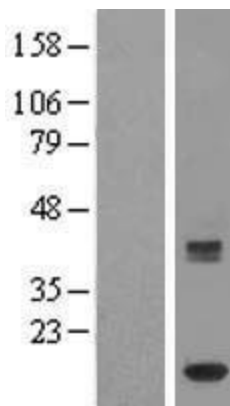
Domains: HesB-like
MW: 14.2 kDa

Gene Summary: ISCA1 is a mitochondrial protein involved in the biogenesis and assembly of iron-sulfur clusters, which play a role in electron-transfer reactions (Cozar-Castellano et al., 2004 [PubMed 15262227]).[supplied by OMIM, Mar 2008]

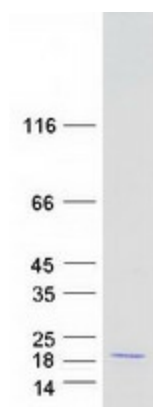
Product images:



Circular map for RC201335



Western blot validation of overexpression lysate (Cat# [LY410656]) using anti-DDK antibody (Cat# [TA50011-100]). Left: Cell lysates from untransfected HEK293T cells; Right: Cell lysates from HEK293T cells transfected with RC201335 using transfection reagent MegaTran 2.0 (Cat# [TT210002]).



Coomassie blue staining of purified ISCA1 protein (Cat# [TP301335]). The protein was produced from HEK293T cells transfected with ISCA1 cDNA clone (Cat# RC201335) using MegaTran 2.0 (Cat# [TT210002]).