

Product datasheet for **RC201330**

DCP1A (NM_018403) Human Tagged ORF Clone

Product data:

Product Type:	Expression Plasmids
Product Name:	DCP1A (NM_018403) Human Tagged ORF Clone
Tag:	Myc-DDK
Symbol:	DCP1A
Synonyms:	HSA275986; Nbla00360; SMAD4IP1; SMIF
Mammalian Cell Selection:	Neomycin
Vector:	pCMV6-Entry (PS100001)
E. coli Selection:	Kanamycin (25 ug/mL)



[View online »](#)

ORF Nucleotide Sequence:

>RC201330 ORF sequence
 Red=Cloning site Blue=ORF Green=Tags(s)

TTTTGTAATACGACTCACTATAGGGCGGCCGGAATTCGTCGACTGGATCCGGTACCGAGGAGATCTGCC
 GCC**CGCATCGCC**

ATGGAGGCGCTGAGTCGAGCTGGCAGGAGATGAGCCTAGCGGCCCTGAAGCAACACGACCCTATATCA
 CCAGCATCGCAGACCTCACGGGCCAGGTCGCTCTGTACACCTTCTGCCCCAAGGCCAACAGTGGGAGAA
 GACTGATATAGAAGGGACCTTATTCGTATATCGAAGGTCAGCTTCCCCTTACCATGGTTTTACCATTGTG
 AATCGACTAAATATGCACAATCTAGTTGAACAGTGAATAAAGATTTGGAATTTAGCTCCATGAACCAT
 TTCTTCTGTATAGAAATGCAAGCTTGTGATATATAGTATCTGGTTTTATGACAAGAATGACTGTCAACG
 CATAGCAAACTCATGGCTGATGTGGTAGAAGAGGAGACACGGCGATCCCAGCAAGCTGCTCGGGACAAA
 CAGAGTCCCAGCCAGGCCAATGGCTGCAGCGACCACAGGCCATCGACATCCTGGAGATGCTGAGCAGAG
 CCAAGGATGAGTATGAGAGGAATCAGATGGGTGACTCAAATATCTCCAGCCCTGGGTTACAGCCAAGCAC
 TCAGCTCTCCAATCTGGGAAGCACCGAGACTCTAGAAGAAATGCCCTCCGGGTACAGGATAAGTCTGCT
 CCATCTGGACACAAGCATCTGACGGTAGAAGAGTTATTTGGAACCTCTTTGCCAAAGGAACAACAGCAG
 TTGTGGGTCTGGATTGAGAAGAAATGGAGAGGTTGCCAGGAGATGCCTCCAGAAAGAGCCCAATTCATT
 CCTACATTTCCCTTTGAGCAGTTAGGAGGAGCCCTCAATCAGAAACCTGGGTGTCCCTTCTGCTGCC
 CACCATTAGTCCAGCCTGAAATCACACCCCGGTGCTAATCACTCCAGCCTCCATCACACAGTCCAATG
 AAAAGCATGCTCCAACCTACACAATCCCCTGAGCCCTGTTCTCAGTCCCCTCTGCCAGCTGAAGCTCC
 TACTGCACAGGTTCCCCCAGCTTACCTCGAAACAGCACCATGATGCAGGCAGTGAAGACCACGCCTAGA
 CAGAGGCTCCACTCCTGAACCAGCCAGTCCCTGAGCTAAGCCATGCCAGTCTGATTGCCAACAGAGCC
 CCTTCAGGGCCCATTTGAACGTGACGAACACAGCTGGCACATCCCTCCCAAGCGTTGATCTTCTCCAGAA
 ACTCAGGTTGACCCACAGCATGACCAAATACAGACACAACCACTTGGGAAAGGTGCAATGGTAGCCAGC
 TTTTCTCCGCGAGCTGGTCAAGTACGCTAGCCACACTGAGAGCTTCATAGAGCCTCCCTCTAAGACAGCAGCAG
 CAAGAGTGGCGCCTCAGCCTCCCTGAGCAACATGGTGTGCTCCCTTCAAGTCTATGCAGCAGAACCA
 GGATCCTGAAGTATTTGTGAGCCTAAGGTGTTATCCAGTGCCATCCCGTTGACAGGCGCCCACTGGTT
 ACTGCAACGACCACTGCAGTGTCTTCAAGTCTGCTGGCCCAAGTGTTCAGCAGACAGTTACAAGAT
 CTTGGACCTTGAGAGGAAAGCCAGCTCCCTTCTCTTAATATTGGAACGCCAGAAAGTCAAGAGAAA
 GCCTTCCATTATCTCAGCAAGTCTCAGCTCCAGGATACATTAATACATTAATAAAGAATGATTCCAGC
 TTCTCAGTACACTTCATGAAGTCTACTGACAGTTCTGACCAAGAACAAGACAACCAACCACTA

ACGCGTACGCGGCCGCTCGAGCAGAACTCATCTCAGAAGAGGATCTGGCAGCAAATGATATCCTGGATT
 ACAAGGATGACGACGATAAGGTTTAA

Protein Sequence:

>RC201330 protein sequence
 Red=Cloning site Green=Tags(s)

MEALSRAQEMSLAALKQHDPYITSIADLTGQVALYTFCKANQWEKTDIEGTLFVYRRSASPYHGFTIV
 NRLNMHNLVEPVNKDLEFQLHEPFLLYRNASLSIYSIWFYDKNDCHRIAKLMADVVEEETRRSQQAARDK
 QSPSQANGCSDHRPIDILEMLSRKDEYERNQMGDSNISPGLQPSTQLSNLSTETLEEMPSGSQDKSA
 PSGHKHLTVEELFGTSLPKEQPAVVGLDSEEMERLPGDASQKPNFLPFPFEQLGGAPQSETLGVPSAA
 HHSVQPEITTPVLITPASITQSNEKHAPTYTIPLSPVLSPTLPAEAPTAQVPPSLPRNSTMMQAVKTTPR
 QRSPLLNQPVPELASHASLIANQSPFRAPLNVNTNAGTSLPSVDLLQKLRLLTPQHDQIQTPQLGKGAMVAS
 FSPAAGQLATPESFIEPPSKTAAARVAASASLSNMVLAQLQSMQNNQDPEVVFQPKVLSAIPVAGAPLV
 TATTTAVSSVLLAPSVFQQTVTRSSDLERKASSPSPLTIGTPESQRKPSIILSKSQLQDTLIHLIKNDSS
 FLSTLHEVYLQVLTKNKDNHNL

TRTRPLEQKLISEEDLAANDILDYKDDDDKV

Chromatograms:

https://cdn.origene.com/chromatograms/mk6573_a02.zip

Restriction Sites:

Sgfl-Mlul

Cloning Scheme:



ACCN: NM_018403

ORF Size: 1746 bp

OTI Disclaimer: The molecular sequence of this clone aligns with the gene accession number as a point of reference only. However, individual transcript sequences of the same gene can differ through naturally occurring variations (e.g. polymorphisms), each with its own valid existence. This clone is substantially in agreement with the reference, but a complete review of all prevailing variants is recommended prior to use. [More info](#)

OTI Annotation: This clone was engineered to express the complete ORF with an expression tag. Expression varies depending on the nature of the gene.

Components: The ORF clone is ion-exchange column purified and shipped in a 2D barcoded Matrix tube containing 10ug of transfection-ready, dried plasmid DNA (reconstitute with 100 ul of water).

- Reconstitution Method:
1. Centrifuge at 5,000xg for 5min.
 2. Carefully open the tube and add 100ul of sterile water to dissolve the DNA.
 3. Close the tube and incubate for 10 minutes at room temperature.
 4. Briefly vortex the tube and then do a quick spin (less than 5000xg) to concentrate the liquid at the bottom.
 5. Store the suspended plasmid at -20°C. The DNA is stable for at least one year from date of shipping when stored at -20°C.

Note: Plasmids are not sterile. For experiments where strict sterility is required, filtration with 0.22um filter is required.

RefSeq: [NM_018403.7](#)

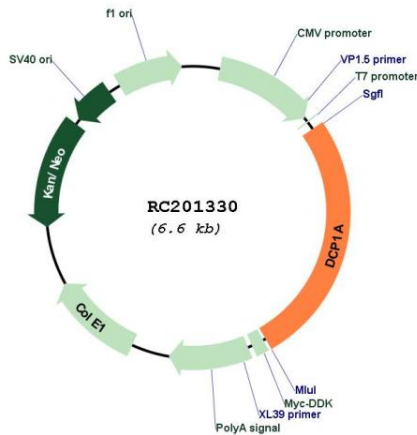
RefSeq Size: 6027 bp

RefSeq ORF: 1749 bp

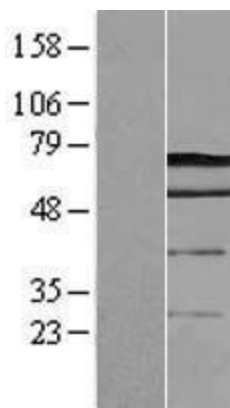
Locus ID: 55802

UniProt ID: [Q9NPI6](#)
 Cytogenetics: 3p21.1
 Protein Families: Transcription Factors
 Protein Pathways: RNA degradation
 MW: 63.3 kDa
 Gene Summary: Decapping is a key step in general and regulated mRNA decay. The protein encoded by this gene is a decapping enzyme. This protein and another decapping enzyme form a decapping complex, which interacts with the nonsense-mediated decay factor hUpf1 and may be recruited to mRNAs containing premature termination codons. This protein also participates in the TGF-beta signaling pathway. Alternative splicing of this gene results in multiple transcript variants. [provided by RefSeq, Feb 2014]

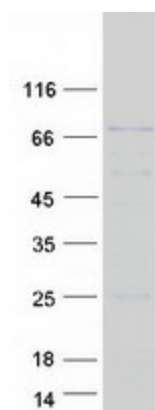
Product images:



Circular map for RC201330



Western blot validation of overexpression lysate (Cat# [LY413075]) using anti-DDK antibody (Cat# [TA50011-100]). Left: Cell lysates from untransfected HEK293T cells; Right: Cell lysates from HEK293T cells transfected with RC201330 using transfection reagent MegaTran 2.0 (Cat# [TT210002]).



Coomassie blue staining of purified DCP1A protein (Cat# [TP301330]). The protein was produced from HEK293T cells transfected with DCP1A cDNA clone (Cat# RC201330) using MegaTran 2.0 (Cat# [TT210002]).