

Product datasheet for RC201325

C11orf51 (ANAPC15) (NM_014042) Human Tagged ORF Clone

Product data:

Product Type: Expression Plasmids
Product Name: C11orf51 (ANAPC15) (NM_014042) Human Tagged ORF Clone
Tag: Myc-DDK
Symbol: C11orf51
Synonyms: APC15; C11orf51; HSPC020
Mammalian Cell Selection: Neomycin
Vector: pCMV6-Entry (PS100001)
E. coli Selection: Kanamycin (25 ug/mL)
ORF Nucleotide Sequence: >RC201325 ORF sequence
Red=Cloning site Blue=ORF Green=Tags(s)

TTTTGTAATACGACTCACTATAGGGCGCCGGGAATTCGTCGACTGGATCCGGTACCGAGGAGATCTGCC
GCC**CGGATCGCC**

ATGTCCACTTTGTCCCTCACTCTTCCCTCGTGTGACTGAGACTCTGTGGTTTAACTGGATCGACCT
GTGTGGAAGAGACAGAGCTGCAGCAGCAGGAACAGCAGCATCAGGCCTGGCTCCAAGCATCGCGGAGAA
AGACAACAACCTGGTTCTATTGGCAAGCCAGCCTCAGAGCACTATGATGACGAGGAAGAAGAGGATGAT
GAAGATGATGAGGATAGTGAAGAGGACTCAGAGGATGATGAGGATATGCAGGACATGGACGAGATGAATG
ACTACAATGAGTCACCGGATGATGGAGAGGTCAATGAGGTGGACATGGAAGGCAACGAACAGGATCAGGA
CCAGTGGATGATC

ACGCGTACGCGGCCGCTCGAGCAGAACTCATCTCAGAAGAGGATCTGGCAGCAAATGATATCCTGGATT
ACAAGGATGACGACGATAAGGTTTAA

Protein Sequence: >RC201325 protein sequence
Red=Cloning site Green=Tags(s)
MSTLFPSLFPRVTETLWFNLDRPCVEETELQQEQHQAWLQSI AEKDNLVPIGKPASEHYDDEEEEDD
EDDEDSEEDSEDDMDQMDDEMNDYNESPDDGEVNEVDMEGNEQDQDQWMI

TRTRPLEQKLISEEDLAANDILDYKDDDDKV

Chromatograms: https://cdn.origene.com/chromatograms/mk6395_f08.zip

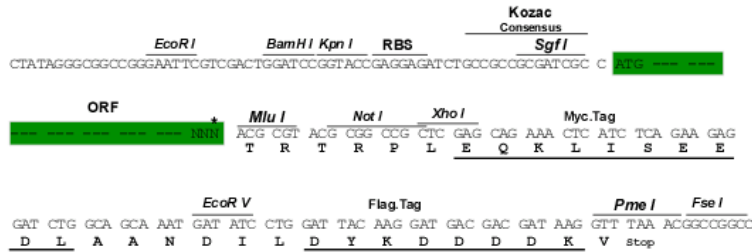
Restriction Sites: SgfI-MluI



[View online »](#)

Cloning Scheme:

Cloning sites used for ORF Shutting:



* The last codon before the Stop codon of the ORF

ACCN: NM_014042

ORF Size: 363 bp

OTI Disclaimer: The molecular sequence of this clone aligns with the gene accession number as a point of reference only. However, individual transcript sequences of the same gene can differ through naturally occurring variations (e.g. polymorphisms), each with its own valid existence. This clone is substantially in agreement with the reference, but a complete review of all prevailing variants is recommended prior to use. [More info](#)
OTI Annotation: This clone was engineered to express the complete ORF with an expression tag. Expression varies depending on the nature of the gene.

Components: The ORF clone is ion-exchange column purified and shipped in a 2D barcoded Matrix tube containing 10ug of transfection-ready, dried plasmid DNA (reconstitute with 100 ul of water).

Reconstitution Method:

1. Centrifuge at 5,000xg for 5min.
2. Carefully open the tube and add 100ul of sterile water to dissolve the DNA.
3. Close the tube and incubate for 10 minutes at room temperature.
4. Briefly vortex the tube and then do a quick spin (less than 5000xg) to concentrate the liquid at the bottom.
5. Store the suspended plasmid at -20°C. The DNA is stable for at least one year from date of shipping when stored at -20°C.

RefSeq: [NM_014042.3](#)
RefSeq Size: 882 bp

RefSeq ORF: 366 bp

Locus ID: 25906

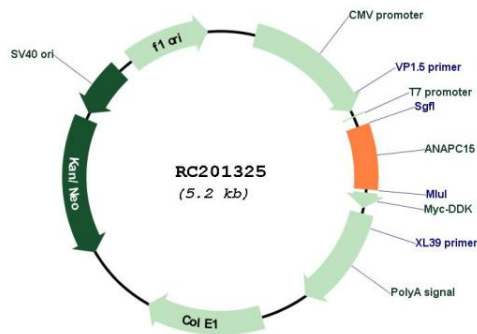
UniProt ID: [P60006](#)

Cytogenetics: 11q13.4

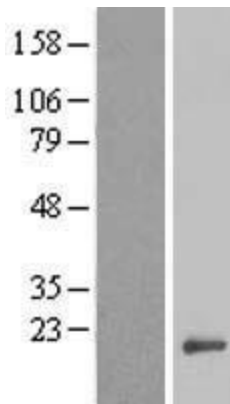
MW: 14.3 kDa

Gene Summary: Component of the anaphase promoting complex/cyclosome (APC/C), a cell cycle-regulated E3 ubiquitin ligase that controls progression through mitosis and the G1 phase of the cell cycle. In the complex, plays a role in the release of the mitotic checkpoint complex (MCC) from the APC/C: not required for APC/C activity itself, but promotes the turnover of CDC20 and MCC on the APC/C, thereby participating in the responsiveness of the spindle assembly checkpoint. Also required for degradation of CDC20.[UniProtKB/Swiss-Prot Function]

Product images:



Circular map for RC201325



Western blot validation of overexpression lysate (Cat# [LY415516]) using anti-DDK antibody (Cat# [TA50011-100]). Left: Cell lysates from untransfected HEK293T cells; Right: Cell lysates from HEK293T cells transfected with RC201325 using transfection reagent MegaTran 2.0 (Cat# [TT210002]).