

## Product datasheet for RC201321

### BOD1 (NM\_138369) Human Tagged ORF Clone

#### Product data:

Product Type: Expression Plasmids  
 Product Name: BOD1 (NM\_138369) Human Tagged ORF Clone  
 Tag: Myc-DDK  
 Symbol: BOD1  
 Synonyms: FAM44B  
 Mammalian Cell Selection: Neomycin  
 Vector: pCMV6-Entry (PS100001)  
 E. coli Selection: Kanamycin (25 ug/mL)  
 ORF Nucleotide Sequence: >RC201321 ORF sequence  
 Red=Cloning site Blue=ORF Green=Tags(s)

TTTTGTAATACGACTCACTATAGGGCGGCCGGGAATTCGTCGACTGGATCCGGTACCGAGGAGATCTGCC  
 GCC**CGATCGCC**

ATGGCGGACGGCGGGCGGGGGGAAGTGGCGCGTGGGCGGGCGGGAAGTACCCAGGCCTCTGCCG  
 GGGCAGCGACTGGCGCTACTGGGCGCAGCGGGGGCGGTGGCCCCATCAACCCGGCCTCGCTGCCCTCCCG  
 CGACCCGAGCTCATCGCTCTCATCGTGGAGCAGCTCAAGAGCCGGGCGCTTTTGGACAGCTTCCGCGG  
 GACTGCCCTGGCCGACGTGGACACCAAGCCAGTTACCAAAACCTGAGGCAGAAAGTGATAATTTTGTGT  
 CAACACATCTGGACAAGCAGGAATGGAATCCTACGATGAACAAAACAGTTGCGAAATGGTCTGAGGCA  
 GAGTGTGGTTTCAGTCAGGGATGTTGGAAGCTGGAGTAGACAGGATTATTTCTCAGGTGGTGGATCCAAA  
 CTTAACCATCTTCAGGCCACAAATAGAACGAGCAATTCATGAGTTCCTGGCGGCCAGAAAAAGCAG  
 CTGTGCCAGCACCCCTCCAGAGCCGAAGGCCAGGACCTCCAGCTCCATCTCAGGACACTTCC

**ACGCGT**ACGCGGCCGCTCGAGCAGAACTCATCTCAGAAGAGGATCTGGCAGCAATGATATCCTGGATT  
 ACAAGGATGACGACGATAAGGTTTAA

Protein Sequence: >RC201321 protein sequence  
 Red=Cloning site Green=Tags(s)

MADGGGGGTGAVGGGTSQASAGAATGATGASGGGGPINPASLPPGDPQLIALIVEQLKSRGLFDSFRR  
 DCLADVDTKPAYQNLRQKVDNFVSTHLDKQEWNPMTMKNQLRNGLRQSVVQSGMLEAGVDRIISQVVDPK  
 LNHIIFRPQIERAIEFLAAQKKAAPPPPEPEGGDPPAPSQDTS

**TR**TRPLEQKLISEEDLAANDILDYKDDDDKV

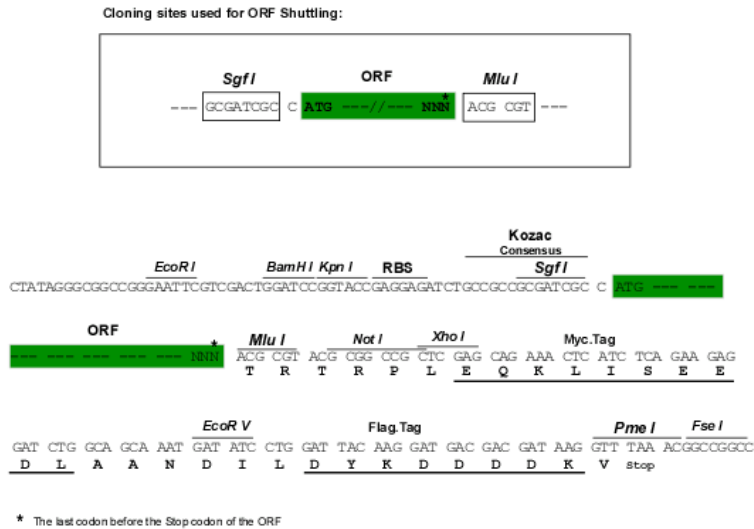
Chromatograms: [https://cdn.origene.com/chromatograms/mk6779\\_b04.zip](https://cdn.origene.com/chromatograms/mk6779_b04.zip)



[View online »](#)

Restriction Sites: SgfI-MluI

Cloning Scheme:



ACCN: NM\_138369

ORF Size: 555 bp

OTI Disclaimer: The molecular sequence of this clone aligns with the gene accession number as a point of reference only. However, individual transcript sequences of the same gene can differ through naturally occurring variations (e.g. polymorphisms), each with its own valid existence. This clone is substantially in agreement with the reference, but a complete review of all prevailing variants is recommended prior to use. [More info](#)

OTI Annotation: This clone was engineered to express the complete ORF with an expression tag. Expression varies depending on the nature of the gene.

Components: The ORF clone is ion-exchange column purified and shipped in a 2D barcoded Matrix tube containing 10ug of transfection-ready, dried plasmid DNA (reconstitute with 100 ul of water).

Reconstitution Method:

1. Centrifuge at 5,000xg for 5min.
2. Carefully open the tube and add 100ul of sterile water to dissolve the DNA.
3. Close the tube and incubate for 10 minutes at room temperature.
4. Briefly vortex the tube and then do a quick spin (less than 5000xg) to concentrate the liquid at the bottom.
5. Store the suspended plasmid at -20°C. The DNA is stable for at least one year from date of shipping when stored at -20°C.

RefSeq: [NM\\_138369.3](#)

RefSeq Size: 1934 bp

RefSeq ORF: 558 bp

Locus ID: 91272

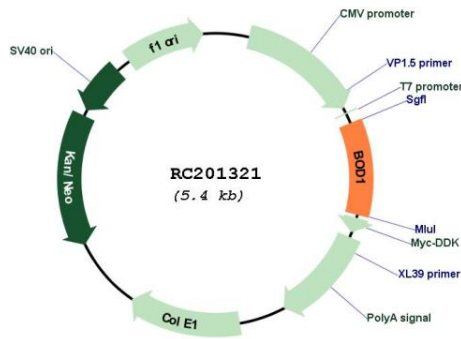
UniProt ID: [Q96IK1](#)

**Cytogenetics:** 5q35.2

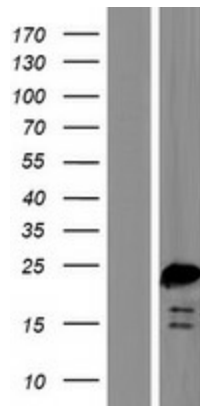
**MW:** 19.2 kDa

**Gene Summary:** Required for proper chromosome biorientation through the detection or correction of syntelic attachments in mitotic spindles.[UniProtKB/Swiss-Prot Function]

**Product images:**



Circular map for RC201321



Western blot validation of overexpression lysate (Cat# [LY408638]) using anti-DDK antibody (Cat# [TA50011-100]). Left: Cell lysates from untransfected HEK293T cells; Right: Cell lysates from HEK293T cells transfected with RC201321 using transfection reagent MegaTran 2.0 (Cat# [TT210002]).