

Product datasheet for **RC201318**

FEM1A (NM_018708) Human Tagged ORF Clone

Product data:

Product Type:	Expression Plasmids
Product Name:	FEM1A (NM_018708) Human Tagged ORF Clone
Tag:	Myc-DDK
Symbol:	FEM1A
Synonyms:	EPRAP
Mammalian Cell Selection:	Neomycin
Vector:	pCMV6-Entry (PS100001)
E. coli Selection:	Kanamycin (25 ug/mL)



[View online »](#)

ORF Nucleotide
Sequence:

>RC201318 representing NM_018708
Red=Cloning site Blue=ORF Green=Tags(s)

TTTTGTAATACGACTCACTATAGGGCGGCCGGGAATTCGTCGACTGGATCCGGTACCGAGGAGATCTGCC
GCCCGCATCGCC

ATGGACCTCCGCACCCCGTGTACAACGCCCGCGTGTATGGCAAGCTGCAGCTGCTCCAGAAGCTGTCTCA
GCGGCCGAGCCGGGAGGAACTGGACGAGCTGACGGGCGAGGTGGCCGGCGGGGAAACGCCGCTACTCAT
CGCCGCCCGCTACGGCCACCTGGACGTGGTGGAGTACCTGGTGGACCGGTGCGGCCGAGCGTGGAGGCC
GGTGGCTCGGTGCACTTCGATGGCGAGACCATCGAGGGCGCGCCCGCTGTGGGCCGCTCCGAGCCG
GCCACCTGGACGTGGTGGGAGCCTGCTGCGCCGCGGGGCTCGGTGAACCGCACCACGCGACCAACTC
CACGCCTCTCCGCGCCGCTGCTTCGACGGCCACCTGGAGGTGGTGGCTACCTGGTGGGAGCACCAG
GCCGACCTGGAGGTGGCCAAACCGGCACGGCCACACGTGCCTCATGATCTCGTGTACAAGGGCCACCGT
AGATCGCCCGCTACCTGCTGGAGCAGGGCGCCAGGTGAACCGGCAGCGCCAAGGGCAACACGGCCCT
GCATGACTGCGCCGAGTCCGGCAGCCTGGAGATCTGCAGCTGCTGCTGGGTGCAAGGCCCGCATGGAA
CGTGACGGCTACGGCATGACCCCGCTGCTCGCGGCCAGCGTGACGGGCCACCAACATCGTGGAGTACC
TCATCCAGGAGCAGCCCGCCAGGAGCAGGTGCGAGGGGAGAGGCTCAGCCTGGGCTGCCCAAGAAGA
CCCCTCCACCAGCCAGGGGTGTGCGCAGCCTCAGGGGGCTCCGTGCTGCAGCTCCTCCCAAGGAAACCA
CTGAACGGGGAATCTTACGAAAGCTGCTGTCCACCAGCCGGGAAGTGGCGTGGAAAGCCTTGAATTGC
TGGGAGCTACGTATGTGGATAAGAAACGAGATCTGCTTGGGGCCCTTAAACACTGGAGGGCGGCCATGGA
GCTGCGTACCAGGGGGCGAGTACCTGCCAAACCGGAGCCCCACAGCTGGTCTGGCCTATGACTAT
TCCAGGGAGGTCAACACCACCGAGGAGCTGGAGGCGTGCATACCGACCCGGATGAGATGCGCATGCAGG
CCCTGTTGATCCGGGAGCGCATCCTCGTCCCTCGCACCCGGACACTTCTATTACATCCGTTACAGGGG
TGCCGTGTACGCCGACTCGGGCAATTCGAGCGCTGCATCCGCTTGTGGAAGTACGCCCTGGACATGCAA
CAGAGCAACCTGGAGCCTCTGAGCCCCATGACCGCCAGCAGTTCCTCTCCTTCGCGGAACCTTCTCCT
ACGTGCTTCAGGACCGGGCCGCCAAAGGCAGCCTGGGCACCCAGATCGGCTTTGCAGACCTCATGGGGT
TCTACCAAAGGGGTCCGGGAAGTGAACGGGCCCTGCAGCTGCCAGGGAGCCCGGAGACTCAGCCAG
TTCACAAAGGCGTGGCCATCATCCTCCACCTGCTCTACCTGCTGGAGAAAGTGGAGTGCACCCAGCC
AGGAGCACCTGAAGCACCAGACCGTCTACCGCCTGCTCAAGTGCAGCGCCAGGGCAAGAACGGCTTCAC
CCCTCTGCACATGGTGTGGACAAGACACCACAACGTGGGCCGCTATCCCGTGGGAGATTCCCCTCC
CTGCACGTGGTCAAAGTGTGCTCGACTGCGGGCCGACCCGGACAGCAGGGATTTGACAACAACACC
CGCTACACATAGCAGCCAGAACAACCTGCCCGCCATCATGAATGCCCTGATCGAAGCAGGGGCCACAT
GGACGCCACCAATGCCTTCAAGAAGACGGCCTACGAGCTGCTGGACGAGAAGCTGCTGGCCAGGGTACC
ATGCAGCCCTTCAACTACGTGACCCTGCAGTGCCTTGGCGCCCGGGCCCTGGATAAGAACAAGATCCCTT
ACAAGGGCTTCATCCCGAAGATCTGGAGGCGTTCATCGAACTGCAC

ACGCGTACGCGGCCGCTCGAGCAGAACTCATCTCAGAAGAGGATCTGGCAGCAATGATATCCTGGATT
ACAAGGATGACGACGATAAGGTTTAA

Protein Sequence: >RC201318 representing NM_018708
 Red=Cloning site Green=Tags(s)

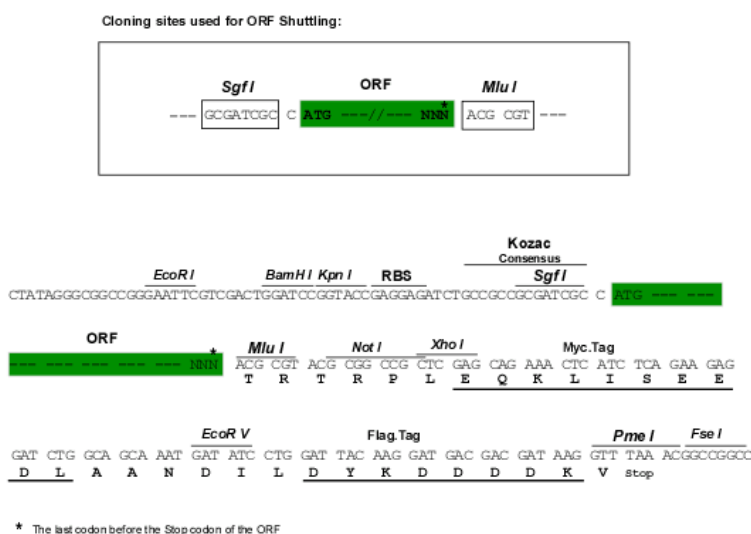
MDLRTAVYNAARDGKQLLQKLLSGRSREELDEL TGEVAGGGTPLLIAARYGHLDVVEYLVDRCGASVEA
 GGSVHFDGETIEGAPPLWAASAAGHLDVVRSLRRGASVNRTTRTNPSTPLRAACFDGHLEVVRYL VGEHQ
 ADLEVANRHGHTCLMISCYKGHREIARYLLEQGAQVNRRAKGNALHDCAESGSLEILQLLLGCKARME
 RDGYGMTPLLAASVTGHTNIVEYLIQEQQEQVAGGEAQPGLPQEDPSTSQGCAQPQGGAPCCSSSPEEP
 LNGESYESCPTSREAAVEALELLGATYVDKRDLLGALKHWRRAMELRHQGGEYLPKPEPPQLVLAYDY
 SREVNTTEELEALITDPDEMRMQALLIRERILGPHSDTSYYIRYRGAVYADSGNFERCIRLWKYALDMQ
 QSNLEPLSPMTASSFLSFAELFSYVLQDRAAKGSLGTQIGFADLMGVLTKGVREVERALQLPREPGDSAQ
 FTKALAILHLLYLLEKVECTPSQEHLKHQT VYRLLKCAPRGKNGFTPLHMAVDKDTTNGRYPVGRFPS
 LHVVKVLDCGADPDSRDFDNNTPLHIAAQNCPAIMNALIEAGAHMDATNAFKKTAYELLEKLLARGT
 MQPFNYVTLQCLAARALDKNKIPYKGFIPEDLEAFIELH

TRTRPLEQKLI SEEDLAANDILDYKDDDDKV

Chromatograms: https://cdn.origene.com/chromatograms/mk8112_c04.zip

Restriction Sites: SgfI-MluI

Cloning Scheme:



ACCN: NM_018708

ORF Size: 2007 bp

OTI Disclaimer: The molecular sequence of this clone aligns with the gene accession number as a point of reference only. However, individual transcript sequences of the same gene can differ through naturally occurring variations (e.g. polymorphisms), each with its own valid existence. This clone is substantially in agreement with the reference, but a complete review of all prevailing variants is recommended prior to use. [More info](#)

OTI Annotation: This clone was engineered to express the complete ORF with an expression tag. Expression varies depending on the nature of the gene.

Components: The ORF clone is ion-exchange column purified and shipped in a 2D barcoded Matrix tube containing 10ug of transfection-ready, dried plasmid DNA (reconstitute with 100 ul of water).

Reconstitution Method:

1. Centrifuge at 5,000xg for 5min.
2. Carefully open the tube and add 100ul of sterile water to dissolve the DNA.
3. Close the tube and incubate for 10 minutes at room temperature.
4. Briefly vortex the tube and then do a quick spin (less than 5000xg) to concentrate the liquid at the bottom.
5. Store the suspended plasmid at -20°C. The DNA is stable for at least one year from date of shipping when stored at -20°C.

RefSeq: [NM_018708.3](#)

RefSeq Size: 3844 bp

RefSeq ORF: 2010 bp

Locus ID: 55527

UniProt ID: [Q9BSK4](#)

Cytogenetics: 19p13.3

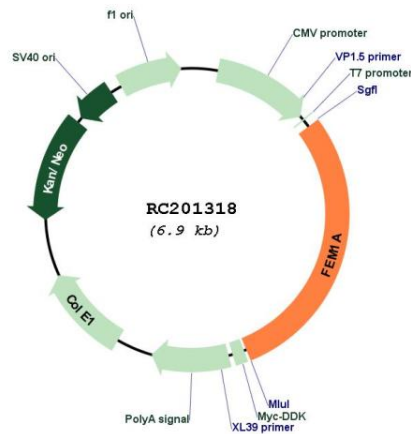
Domains: ANK

Protein Families: Druggable Genome

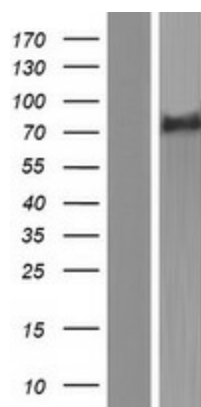
MW: 73.5 kDa

Gene Summary: Probable component of an E3 ubiquitin-protein ligase complex, in which it may act as a substrate recognition subunit (By similarity). May participate in antiinflammatory signaling via its interaction with PTGER4.[UniProtKB/Swiss-Prot Function]

Product images:



Circular map for RC201318



Western blot validation of overexpression lysate (Cat# [LY412900]) using anti-DDK antibody (Cat# [TA50011-100]). Left: Cell lysates from untransfected HEK293T cells; Right: Cell lysates from HEK293T cells transfected with RC201318 using transfection reagent MegaTran 2.0 (Cat# [TT210002]).