

Product datasheet for RC201314

Bcl x (BCL2L1) (NM_138578) Human Tagged ORF Clone

Product data:

Product Type:	Expression Plasmids
Product Name:	Bcl x (BCL2L1) (NM_138578) Human Tagged ORF Clone
Tag:	Myc-DDK
Symbol:	Bcl x
Synonyms:	Bcl-X; BCL-XL/S; BCL2L; BCLX; PPP1R52
Mammalian Cell Selection:	Neomycin
Vector:	pCMV6-Entry (PS100001)
E. coli Selection:	Kanamycin (25 ug/mL)
ORF Nucleotide Sequence:	>RC201314 ORF sequence Red=Cloning site Blue=ORF Green=Tags(s)

TTTGTAAATACGACTCACTATAGGGCGGCCGGAATTCGTCGACTGGATCCGGTACCGAGGAGATCTGCC
 GCCCGGATCGCC

ATGTCTCAGAGCAACCGGGAGCTGGTGGTTGACTTTCTCTCTCTACAAGCTTTCCAGAAAGGATACAGCT
 GGAGTCAGTTTAGTGATGTGGAAGAGAACAGGACTGAGGCCCCAGAAGGGACTGAATCGGAGATGGAGAC
 CCCCAGTGCCATCAATGGCAACCCATCCTGGCACCTGGCAGACAGCCCCGCGTGAATGGAGCCACTGGC
 CACAGCAGCAGTTTGGATGCCCGGGAGGTGATCCCATGGCAGCAGTAAAGCAAGCGCTGAGGGAGGCAG
 GCGACGAGTTTGAAGTACGGTACCGCGGGCATTGAGTACCTGACATCCAGCTCCACATACCCCAGG
 GACAGCATATCAGAGCTTTGAACAGGTAGTGAATGAACTCTCCGGGATGGGTAACTGGGGTCGCATT
 GTGGCCTTTTTCTCCTTCGGCGGGCACTGTGCGTGGAAGCGTAGACAAGGAGATGCAGGTATTGGTGA
 GTCGGATCGCAGCTTGGATGGCCACTTACCTGAATGACCACCTAGAGCCTTGGATCCAGGAGAACGGCGG
 CTGGGATACTTTTGTGGAAGTCTATGGGAACAATGCAGCAGCCGAGAGCCGAAAGGGCCAGGAACGCTTC
 AACCGTGGTTCTGACGGGCATGACTGTGGCCGGCGTGGTTCTGCTGGGCTCACTCTTCAGTCGGAAA

ACGCGTACGCGGCCGCTCGAGCAGAACTCATCTCAGAAGAGGATCTGGCAGCAAATGATATCCTGGATT
 ACAAGGATGACGACGATAAGGTTTAA


[View online »](#)

Protein Sequence: >RC201314 protein sequence
 Red=Cloning site Green=Tags(s)

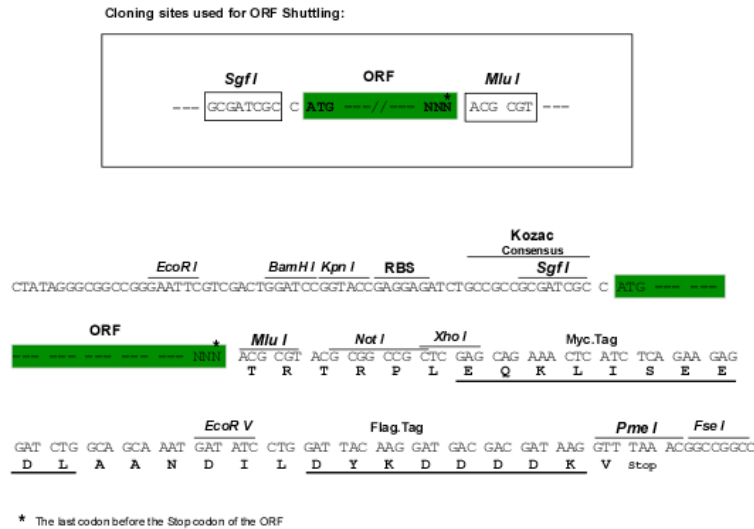
MSQSNRELVDFLSYKLSQKGYWSQFSDVEENRTEAPEGTESEMETPSAINGNPSWHLADSPAVNGATG
 HSSSLDAREVIPMAAVKQALREAGDEFELRYRRAFSDLTSQLHITPGTAYQSFEQVYNELFRDGVNWGRI
 VAFFSFGGALCVESVDKEMQVLVSRIAAMATYLNHLEPWIQENGWDTFVELYGNNAAESRKQGERF
 NRWFLTGMTVAGVLLGSLFSRK

TRTRPLEQKLISEEDLAANDILDYKDDDDKV

Chromatograms: https://cdn.origene.com/chromatograms/mk6052_d09.zip

Restriction Sites: SgfI-MluI

Cloning Scheme:



ACCN: NM_138578

ORF Size: 699 bp

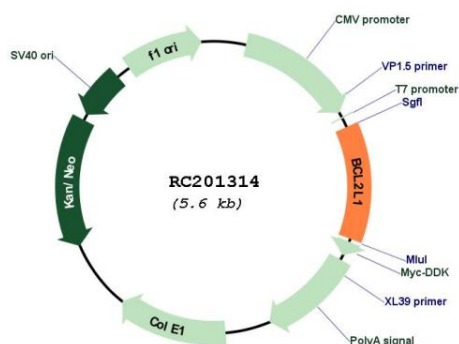
OTI Disclaimer: The molecular sequence of this clone aligns with the gene accession number as a point of reference only. However, individual transcript sequences of the same gene can differ through naturally occurring variations (e.g. polymorphisms), each with its own valid existence. This clone is substantially in agreement with the reference, but a complete review of all prevailing variants is recommended prior to use. [More info](#)

OTI Annotation: This clone was engineered to express the complete ORF with an expression tag. Expression varies depending on the nature of the gene.

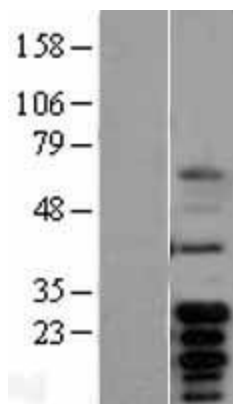
Components: The ORF clone is ion-exchange column purified and shipped in a 2D barcoded Matrix tube containing 10ug of transfection-ready, dried plasmid DNA (reconstitute with 100 ul of water).

Reconstitution Method:	<ol style="list-style-type: none"> 1. Centrifuge at 5,000xg for 5min. 2. Carefully open the tube and add 100ul of sterile water to dissolve the DNA. 3. Close the tube and incubate for 10 minutes at room temperature. 4. Briefly vortex the tube and then do a quick spin (less than 5000xg) to concentrate the liquid at the bottom. 5. Store the suspended plasmid at -20°C. The DNA is stable for at least one year from date of shipping when stored at -20°C.
Note:	Plasmids are not sterile. For experiments where strict sterility is required, filtration with 0.22um filter is required.
RefSeq:	<u>NM_138578.3</u>
RefSeq Size:	2575 bp
RefSeq ORF:	702 bp
Locus ID:	598
UniProt ID:	<u>Q07817</u>
Cytogenetics:	20q11.21
Domains:	Bcl-2, BH4
Protein Families:	Druggable Genome, ES Cell Differentiation/IPS, Transmembrane
Protein Pathways:	Amyotrophic lateral sclerosis (ALS), Apoptosis, Chronic myeloid leukemia, Jak-STAT signaling pathway, Pancreatic cancer, Pathways in cancer, Small cell lung cancer
MW:	26 kDa
Gene Summary:	<p>The protein encoded by this gene belongs to the BCL-2 protein family. BCL-2 family members form hetero- or homodimers and act as anti- or pro-apoptotic regulators that are involved in a wide variety of cellular activities. The proteins encoded by this gene are located at the outer mitochondrial membrane, and have been shown to regulate outer mitochondrial membrane channel (VDAC) opening. VDAC regulates mitochondrial membrane potential, and thus controls the production of reactive oxygen species and release of cytochrome C by mitochondria, both of which are the potent inducers of cell apoptosis. Alternative splicing results in multiple transcript variants encoding two different isoforms. The longer isoform acts as an apoptotic inhibitor and the shorter isoform acts as an apoptotic activator. [provided by RefSeq, Dec 2015]</p>

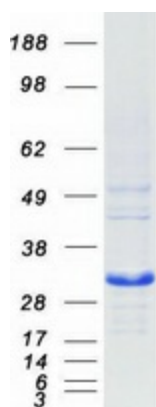
Product images:



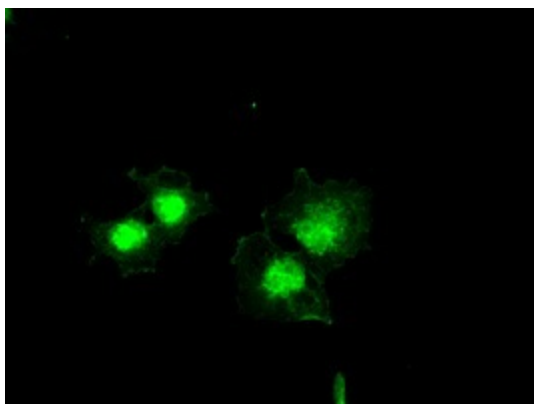
Circular map for RC201314



Western blot validation of overexpression lysate (Cat# [LY403363]) using anti-DDK antibody (Cat# [TA50011-100]). Left: Cell lysates from untransfected HEK293T cells; Right: Cell lysates from HEK293T cells transfected with RC201314 using transfection reagent MegaTran 2.0 (Cat# [TT210002]).



Coomassie blue staining of purified BCL2L1 protein (Cat# [TP301314]). The protein was produced from HEK293T cells transfected with BCL2L1 cDNA clone (Cat# RC201314) using MegaTran 2.0 (Cat# [TT210002]).



Anti-BCL2L1 mouse monoclonal antibody ([TA500097]) immunofluorescent staining of COS7 cells transiently transfected by pCMV6-ENTRY BCL2L1 (RC201314) (1:100).