

Product datasheet for RC201313

PAFAH1B2 (NM_002572) Human Tagged ORF Clone

Product data:

Product Type:	Expression Plasmids
Product Name:	PAFAH1B2 (NM_002572) Human Tagged ORF Clone
Tag:	Myc-DDK
Symbol:	PAFAH1B2
Synonyms:	HEL-S-303
Mammalian Cell Selection:	Neomycin
Vector:	pCMV6-Entry (PS100001)
E. coli Selection:	Kanamycin (25 ug/mL)
ORF Nucleotide Sequence:	>RC201313 ORF sequence Red=Cloning site Blue=ORF Green=Tags(s)

TTTTGTAATACGACTCACTATAGGGCGCCGGGAATTCGTCGACTGGATCCGGTACCGAGGAGATCTGCC
GCC**CGATCGCC**

ATGAGCCAAGGAGACTCAAACCCAGCAGCTATTCCGCATGCAGCAGAAGATATTCAAGGAGATGACCGAT
GGATGTCTCAGCACAACAGATTTGTTTTGGACTGTAAAGACAAAGAGCCTGATGTACTGTTCTGGGAGA
CTCCATGGTGCAGTTAATGCAGCAATATGAGATATGGCGAGAGCTTTTTCCCACTTCATGCCTGAAT
TTTGAATTGGGGGAGATACAACAAGACATGTTTTGTGGAGACTAAAGAATGGAGAAGTGGAGAATTA
AGCCTAAGGTCATTGTTGTCTGGGTAGGAACAAATAACCACGAAAATACAGCAGAAGAAGTAGCAGGTGG
GATCGAGGCCATTGTACAACCTTCAACACAAGGCAGCCACAGGCCAAAATCATTGTATTGGTTTTGTTA
CCTCGAGGTGAGAAACCAATCCTTTGAGGCAAAAGAACGCCAAGGTGAACCAACTCCTCAAGTTTTGCG
TGCCGAAGCTTGCCAACGTGCAGCTCCTGGATACCGACGGGGTTTTGTGCACTCGGACGGTGCCATCTC
CTGCCACGACATGTTGATTTTCTGCATCTGACAGGAGGGGCTATGCAAAGATCTGCAAACCCCTGCAT
GAACTGATCATGCAGTTGTTGGAGGAAACACCTGAGGAGAACAACACCATTGCC

ACGCGTACGCGGGCGCTCGAGCAGAAACTCATCTCAGAAGAGGATCTGGCAGCAATGATATCCTGGATT
ACAAGGATGACGACGATAAGGTTTAA



[View online »](#)

Protein Sequence: >RC201313 protein sequence
Red=Cloning site Green=Tags(s)

MSQGDSNPAAIPHAAEDIQGDDRWMSQHNRFLVDCKDKEPDVLFVGDGSMVQLMQQYEWRELF SPLHALN
 FGIGGDTTRHVLWRLKNGELENIKPKVIVVWVGTNNHENTAAEVAGGIEAIVQLINTRQPQAKIIVLGLL
 PRGEKPNPLRQKNAKVNQLLKVSLPKLANVQLLDTDGGFVHSDGAISCHDMDFDLHLTGGGYAKICKPLH
 ELIMQLLEETPEEKQTTIA

TRTRPLEQKLISEEDLAANDILDYKDDDDKV

Chromatograms: https://cdn.origene.com/chromatograms/mk6084_a09.zip

Restriction Sites: SgfI-MluI

Cloning Scheme:



ACCN: NM_002572

ORF Size: 687 bp

OTI Disclaimer: The molecular sequence of this clone aligns with the gene accession number as a point of reference only. However, individual transcript sequences of the same gene can differ through naturally occurring variations (e.g. polymorphisms), each with its own valid existence. This clone is substantially in agreement with the reference, but a complete review of all prevailing variants is recommended prior to use. [More info](#)

OTI Annotation: This clone was engineered to express the complete ORF with an expression tag. Expression varies depending on the nature of the gene.

Components: The ORF clone is ion-exchange column purified and shipped in a 2D barcoded Matrix tube containing 10ug of transfection-ready, dried plasmid DNA (reconstitute with 100 ul of water).

Reconstitution Method:

1. Centrifuge at 5,000xg for 5min.
2. Carefully open the tube and add 100ul of sterile water to dissolve the DNA.
3. Close the tube and incubate for 10 minutes at room temperature.
4. Briefly vortex the tube and then do a quick spin (less than 5000xg) to concentrate the liquid at the bottom.
5. Store the suspended plasmid at -20°C. The DNA is stable for at least one year from date of shipping when stored at -20°C.

RefSeq: [NM_002572.4](#)

RefSeq Size: 4200 bp

RefSeq ORF: 690 bp

Locus ID: 5049

UniProt ID: [P68402](#)

Cytogenetics: 11q23.3

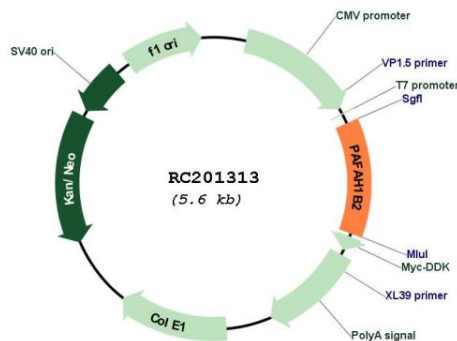
Domains: Lipase_GDSL

Protein Pathways: Ether lipid metabolism, Metabolic pathways

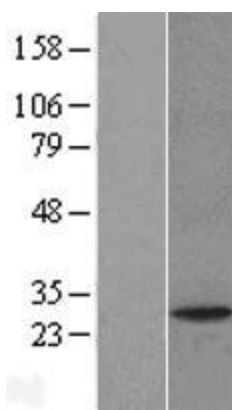
MW: 25.6 kDa

Gene Summary: Platelet-activating factor acetylhydrolase (PAFAH) inactivates platelet-activating factor (PAF) into acetate and LYSO-PAF. This gene encodes the beta subunit of PAFAH, the other subunits are alpha and gamma. Multiple alternatively spliced transcript variants have been described for this gene. [provided by RefSeq, Jan 2014]

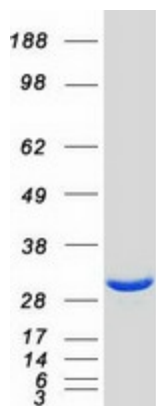
Product images:



Circular map for RC201313



Western blot validation of overexpression lysate (Cat# [LY419243]) using anti-DDK antibody (Cat# [TA50011-100]). Left: Cell lysates from untransfected HEK293T cells; Right: Cell lysates from HEK293T cells transfected with RC201313 using transfection reagent MegaTran 2.0 (Cat# [TT210002]).



Coomassie blue staining of purified PAF1B2 protein (Cat# [TP301313]). The protein was produced from HEK293T cells transfected with PAF1B2 cDNA clone (Cat# RC201313) using MegaTran 2.0 (Cat# [TT210002]).