

## Product datasheet for RC201311

### TRAPPC6A (NM\_024108) Human Tagged ORF Clone

#### Product data:

**Product Type:** Expression Plasmids  
**Product Name:** TRAPPC6A (NM\_024108) Human Tagged ORF Clone  
**Tag:** Myc-DDK  
**Symbol:** TRAPPC6A  
**Synonyms:** TRS33  
**Mammalian Cell Selection:** Neomycin  
**Vector:** pCMV6-Entry (PS100001)  
**E. coli Selection:** Kanamycin (25 ug/mL)  
**ORF Nucleotide Sequence:** >RC201311 ORF sequence  
Red=Cloning site Blue=ORF Green=Tags(s)

TTTTGTAATACGACTCACTATAGGGCGCCGGGAATTCGTCGACTGGATCCGGTACCGAGGAGATCTGCC  
GCC**CGATCGCC**

ATGGCGGATACTGTGTTGTTGAGTTTCTTACACGGAGATGGTGGCTGAGCTGTGGCTCACGACCCCG  
ACCCCGCCCGGGGTGAGCGCCGGCTCCGTGGGAGGAAGCGGGGCCACCAAGGGACAGAAGATGAG  
CCTGTCGGTCCTGGAGGTATGGGGTCCGTGTGGCCAGGCTCTAGGCGAGAGGCTGCCCGGGAGACG  
CTGGCCTTCAGGGAGGAGCTGGATGTCTCAAGTCTTGTGCAAAGACCTGTGGGTGGCGGTGTTCCAGA  
AGCAGATGGACAGCCTGCGCACCAATCACCAGGGGACCTACGTCCTGCAAGACAACAGCTCCCCCTCT  
CCTCCCGATGGCCTCTGGCCTGCAGTATCTGGAGGAAGCACCAAGTTCCTGGCCTTACCTGCGGCCTC  
CTGCGCGCGCCCTCTATACCCTGGCATTGAGAGCGTGGTCACCGCCTCCGTGGCAGCCCTGCCGTCT  
GTAAGTCCAGGTGGTGATTCCGAAATCC

**ACGCGT**ACGCGGCCGCTCGAGCAGAACTCATCTCAGAAGAGGATCTGGCAGCAAATGATATCCTGGATT  
ACAAGGATGACGACGATAAGGTTTAA

**Protein Sequence:** >RC201311 protein sequence  
Red=Cloning site Green=Tags(s)

MADTVLFEFLHTEMVAELWAHDPDPGPGVSAGLRGEEAGATKGQKMSLSVLEGMGFRVQGALGERLPRET  
LAFREELDVLFKFLCKDLWVAVFQKQMSLRTNHQGTYYVLQDNSFPLLLPMASGLQYLEEAPKFLAFTCGL  
LRGALYTLGIESVVTASVAALPVCKFQVVIPKS

**TR**TRPLEQKLISEEDLAANDILDYKDDDDKV

**Chromatograms:** [https://cdn.origene.com/chromatograms/mk6393\\_f12.zip](https://cdn.origene.com/chromatograms/mk6393_f12.zip)



[View online »](#)

**Restriction Sites:** SgfI-MluI

**Cloning Scheme:**



**ACCN:** NM\_024108

**ORF Size:** 519 bp

**OTI Disclaimer:** The molecular sequence of this clone aligns with the gene accession number as a point of reference only. However, individual transcript sequences of the same gene can differ through naturally occurring variations (e.g. polymorphisms), each with its own valid existence. This clone is substantially in agreement with the reference, but a complete review of all prevailing variants is recommended prior to use. [More info](#)

**OTI Annotation:** This clone was engineered to express the complete ORF with an expression tag. Expression varies depending on the nature of the gene.

**Components:** The ORF clone is ion-exchange column purified and shipped in a 2D barcoded Matrix tube containing 10ug of transfection-ready, dried plasmid DNA (reconstitute with 100 ul of water).

**Reconstitution Method:**

1. Centrifuge at 5,000xg for 5min.
2. Carefully open the tube and add 100ul of sterile water to dissolve the DNA.
3. Close the tube and incubate for 10 minutes at room temperature.
4. Briefly vortex the tube and then do a quick spin (less than 5000xg) to concentrate the liquid at the bottom.
5. Store the suspended plasmid at -20°C. The DNA is stable for at least one year from date of shipping when stored at -20°C.

**RefSeq:** [NM\\_024108.3](#)

**RefSeq Size:** 838 bp

**RefSeq ORF:** 522 bp

**Locus ID:** 79090

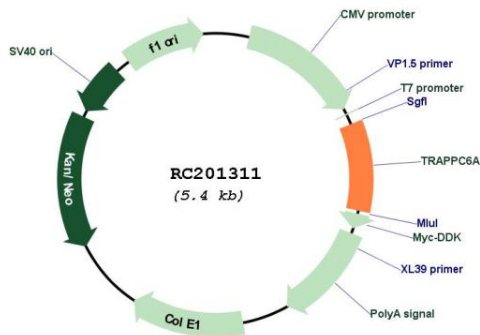
**UniProt ID:** [O75865](#)

**Cytogenetics:** 19q13.32

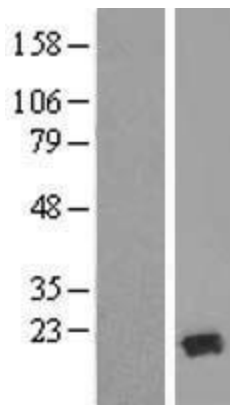
**MW:** 18.9 kDa

**Gene Summary:** This gene encodes a component of the trafficking protein particle complex, which tethers transport vesicles to the cis-Golgi membrane. Loss of expression of the related gene in mouse affects coat and eye pigmentation, suggesting that the encoded protein may be involved in melanosome biogenesis. Alternatively spliced transcript variants encoding multiple isoforms have been observed for this gene. [provided by RefSeq, Aug 2012]

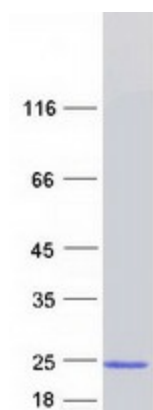
**Product images:**



Circular map for RC201311



Western blot validation of overexpression lysate (Cat# [LY411342]) using anti-DDK antibody (Cat# [TA50011-100]). Left: Cell lysates from untransfected HEK293T cells; Right: Cell lysates from HEK293T cells transfected with RC201311 using transfection reagent MegaTran 2.0 (Cat# [TT210002]).



Coomassie blue staining of purified TRAPPC6A protein (Cat# [TP301311]). The protein was produced from HEK293T cells transfected with TRAPPC6A cDNA clone (Cat# RC201311) using MegaTran 2.0 (Cat# [TT210002]).