

Product datasheet for RC201309

C7orf23 (TMEM243) (NM_024315) Human Tagged ORF Clone

Product data:

Product Type: Expression Plasmids
Product Name: C7orf23 (TMEM243) (NM_024315) Human Tagged ORF Clone
Tag: Myc-DDK
Symbol: C7orf23
Synonyms: C7orf23; MM-TRAG; MMTRAG
Mammalian Cell Selection: Neomycin
Vector: pCMV6-Entry (PS100001)
E. coli Selection: Kanamycin (25 ug/mL)
ORF Nucleotide Sequence: >RC201309 ORF sequence
 Red=Cloning site Blue=ORF Green=Tags(s)

TTTTGTAATACGACTCACTATAGGGCGGCCGGAATTCGTCGACTGGATCCGGTACCGAGGAGATCTGCC
 GCCCGCATCGCC

ATGGAGGACTTTGCTACCAGGACCTACGGCACCAGTGGCCTGGACAACAGACCTCTGTTTGGGAGACGT
 CCGCCAAGGATCGAATCATCAATTTAGTTGTTGGCAGCTTAACATCCTTATTGATTCTAGTAACGCTGAT
 AAGTGCTTTTGTTCCTCAACTACCTCCAAAACCGTTGAATATATTCTTTGCTGTCTGCATCTTTG
 AGTAGTATTACTGCCTGCATACTTATCTACTGGTATCGACAAGGAGACTAGAACCGAAATTTAGAAAGC
 TAATTTACTATATCATATTTTCTATCATCATGTTGTGTATATGTGCAAACCTGTACTTCCATGATGTGGG
 AAGG

ACGCGTACGCGGCCGCTCGAGCAGAAACTCATCTCAGAAGAGGATCTGGCAGCAAATGATATCCTGGATT
 ACAAGGATGACGACGATAAGGTTTAA

Protein Sequence: >RC201309 protein sequence
 Red=Cloning site Green=Tags(s)
 MEDFATRTYGTSGLDNRPLFGETSAKDRIINLVVGLTSLLLILVTLISAFVFPQLPPKPLNIFFAVCISL
 SSITACILIIYWYRQGDLEPKFRKLIYYIIFSIIMLCICANLYFHDVGR

TRTRPLEQKLISEEDLAANDILDYKDDDDKV

Chromatograms: https://cdn.origene.com/chromatograms/mk6389_g02.zip

Restriction Sites: SgfI-MluI



[View online »](#)

Cloning Scheme:


ACCN: NM_024315

ORF Size: 354 bp

OTI Disclaimer: The molecular sequence of this clone aligns with the gene accession number as a point of reference only. However, individual transcript sequences of the same gene can differ through naturally occurring variations (e.g. polymorphisms), each with its own valid existence. This clone is substantially in agreement with the reference, but a complete review of all prevailing variants is recommended prior to use. [More info](#)

OTI Annotation: This clone was engineered to express the complete ORF with an expression tag. Expression varies depending on the nature of the gene.

Components: The ORF clone is ion-exchange column purified and shipped in a 2D barcoded Matrix tube containing 10ug of transfection-ready, dried plasmid DNA (reconstitute with 100 ul of water).

- Reconstitution Method:**
1. Centrifuge at 5,000xg for 5min.
 2. Carefully open the tube and add 100ul of sterile water to dissolve the DNA.
 3. Close the tube and incubate for 10 minutes at room temperature.
 4. Briefly vortex the tube and then do a quick spin (less than 5000xg) to concentrate the liquid at the bottom.
 5. Store the suspended plasmid at -20°C. The DNA is stable for at least one year from date of shipping when stored at -20°C.

RefSeq: [NM_024315.4](#)

RefSeq Size: 1083 bp

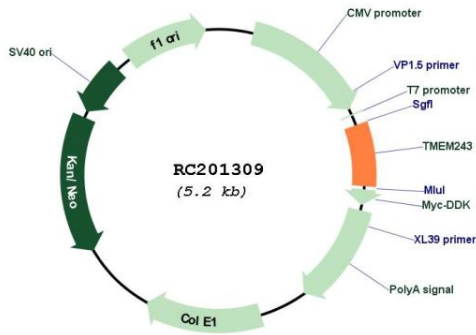
RefSeq ORF: 357 bp

Locus ID: 79161

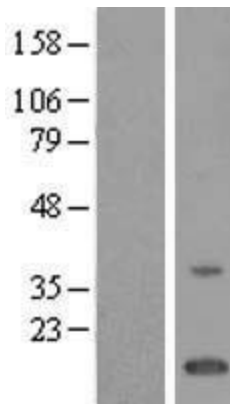
UniProt ID: [Q9BU79](#)

Cytogenetics: 7q21.12
 Protein Families: Transmembrane
 MW: 13.4 kDa

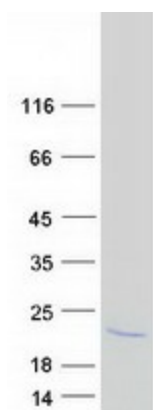
Product images:



Circular map for RC201309



Western blot validation of overexpression lysate (Cat# [LY411313]) using anti-DDK antibody (Cat# [TA50011-100]). Left: Cell lysates from untransfected HEK293T cells; Right: Cell lysates from HEK293T cells transfected with RC201309 using transfection reagent MegaTran 2.0 (Cat# [TT210002]).



Coomassie blue staining of purified TMEM243 protein (Cat# [TP301309]). The protein was produced from HEK293T cells transfected with TMEM243 cDNA clone (Cat# RC201309) using MegaTran 2.0 (Cat# [TT210002]).