

Product datasheet for **RC201300**

ATXN10 (NM_013236) Human Tagged ORF Clone

Product data:

Product Type:	Expression Plasmids
Product Name:	ATXN10 (NM_013236) Human Tagged ORF Clone
Tag:	Myc-DDK
Symbol:	ATXN10
Synonyms:	E46L; HUMEEP; SCA10
Mammalian Cell Selection:	Neomycin
Vector:	pCMV6-Entry (PS100001)
E. coli Selection:	Kanamycin (25 ug/mL)



[View online »](#)

ORF Nucleotide Sequence:

>RC201300 ORF sequence
 Red=Cloning site Blue=ORF Green=Tags(s)

TTTTGTAATACGACTCACTATAGGGCGGCCGGGAATTCGTCGACTGGATCCGGTACCGAGGAGATCTGCC
 GCC**CGGATCGCC**

ATGGCGCGCCAGGCCCGCCTGCCAGGCTGTGGGCGTCATGGTGCCGGCGCCATCCAAGACCTGG
 AGGCCCTGCGCGCTCACGGCGCTCTTCAAAGAGCAGCGGAACCGAGAAACAGCACCCAGGACTATCTT
 CCAAAGAGTTCTGGATATCCTAAAGAAATCTTCTCATGCTGTTGAGCTTGCCCTGCAGAGATCCATCCCAA
 GTGAAAACTGGCTTCCAGTCTGCAGTTAATAACAGAATGCTTCAGGTGCTTCGCAATGCTTGCATAG
 AGTGTCTGTGAACCAGAATTCAATCAGGAACCTGGATACGATTGGTGTGCTGTTGATTGATTCTTCT
 GTTTCGTAAGTGCAGTGAACAGGAATCTCTGTTGACAGCTTTTCGCTGTGGCCTGCAGTTTTAGGC
 AACATTGCCTCACGGAATGAAGATTCAGTCTATTGTTGGGTGCATGCTTCCGAGAACTGTTTTGT
 CTTGCTTAAATCATCCGGACAAAAAATGTTGCCTACTTCAATGATTTTGTACATCCCTAATCA
 TGAAAGAATGAAAGAAGTGGAGGAGAACCTCAATATTGCAATTGATGTCATAGATGCTTACCAAAAACAT
 CCTGAATCAGAATGGCCGTTCTTGATTATTACAGACCTCTTCTGAAAAGCCCGAATTGGTACAAGCCA
 TGTTTCCAAACTGAACATCAAGAAAGAGTTACTGTTAGACCTTATGATAGCCAAGATAACGAGTGA
 TGAGCCACTACCAAGGATGACATCCCTGTGTTTTGCGGCATGCTGAGTTGATTGCAAGCACCTTTGTG
 GATCAGTGCAAGACTGTGCTCAAGCTGGCCTCTGAGGAGCCTCCTGATGATGAGGAGGCACTGGCTACAA
 TTAGGCTTCTCGACGCTCTGTGCGAAATGACTGTGAATACTGAGCTGCTCGGCTATCTGCAGTTTTCC
 TGGCTTGTGAAAGAGTGATTGATCTTTGCGGGTGATTCATGTAGCTGGAAAAGAAACCAAAACATC
 TTCAGTAATTGTGGTTCGCTGAGAGCAGAAGGTGACATCTCAATGTGGCAATGGGTTAAGTCTCATC
 TCATTGCTGATTGAAATCTGTGTTACAAGAATAAAGATAACCAAGACAAGGTAATGAGCTGGATGG
 TATCCCGTTGATCCTGGACAACGCAACATCAGTGACAGTAACCCCTTCTGACCCAGTGGGTGATAT
 GCCATCCGAAACCTTACCGAAGCAACAGCCAAAACCAAGATTTGATTGCAAAGATGGAGGAACAGGGGC
 TGGCAGATGCATCCCTACTTAAAAAAGTGGGTTTTGAAGTTGAAAAGAAAGGCGAAAAGCTGATCTGAA
 ATCTACTAGAGACACCCCTAAGCCA

ACGGTACGCGGCCGCTCGAGCAGAACTCATCTCAGAAGAGGATCTGGCAGCAATGATATCTGGATT
 ACAAGGATGACGACGATAAGGTTTAA

Protein Sequence:

>RC201300 protein sequence
 Red=Cloning site Green=Tags(s)

MAAPRPPPARLSGVMVPAPIQDLEALRALTALFKEQRNRETAPRTIFQRVLDILKSSHAVELACRDPSQ
 VENLASSLQLITECFRCLRNACIECSVNQNSIRNLDTIGVAVDLILLFREL RVEQESLLTAFRCGLQFLG
 NIASRNEQSISIVVHAFPELFLSCLNHPDKKIVAYSSMILFTSLNHERMKELEENLNIAIDVIDAYQKH
 PESEWPFLIITDLFLKSPPELVQAMFPKLNQERVTLDDLMIKITSDEPLTKDDIPVFLRHAELIASTFV
 DQCKTVLKLASEEPPDDEALATIRLLDVLCEMTVNTTELLGYLQVFPGLLERVIDLLRVIHVAGKETTNI
 FSNCGCVRAEGDISNVANGFKSHLIRLIGNLCYKNKDNQKVNELDGIPLILDNCNISDSNPFLTQWVIY
 AIRNLTEDNSQNQLIAKMEEQLADASLLKKVGFVEKKGKELILKSTRDTPKP

TRTRPLEQKLISEEDLAANDILDYKDDDDKV

Chromatograms:

https://cdn.origene.com/chromatograms/mk6833_e10.zip

Restriction Sites:

Sgfl-Mlul

Cloning Scheme:

Cloning sites used for ORF Shutting:



* The last codon before the Stop codon of the ORF

ACCN: NM_013236

ORF Size: 1425 bp

OTI Disclaimer: The molecular sequence of this clone aligns with the gene accession number as a point of reference only. However, individual transcript sequences of the same gene can differ through naturally occurring variations (e.g. polymorphisms), each with its own valid existence. This clone is substantially in agreement with the reference, but a complete review of all prevailing variants is recommended prior to use. [More info](#)
OTI Annotation: This clone was engineered to express the complete ORF with an expression tag. Expression varies depending on the nature of the gene.

Components: The ORF clone is ion-exchange column purified and shipped in a 2D barcoded Matrix tube containing 10ug of transfection-ready, dried plasmid DNA (reconstitute with 100 ul of water).

Reconstitution Method:

1. Centrifuge at 5,000xg for 5min.
2. Carefully open the tube and add 100ul of sterile water to dissolve the DNA.
3. Close the tube and incubate for 10 minutes at room temperature.
4. Briefly vortex the tube and then do a quick spin (less than 5000xg) to concentrate the liquid at the bottom.
5. Store the suspended plasmid at -20°C. The DNA is stable for at least one year from date of shipping when stored at -20°C.

RefSeq: [NM_013236.4](#)
RefSeq Size: 3340 bp

RefSeq ORF: 1428 bp

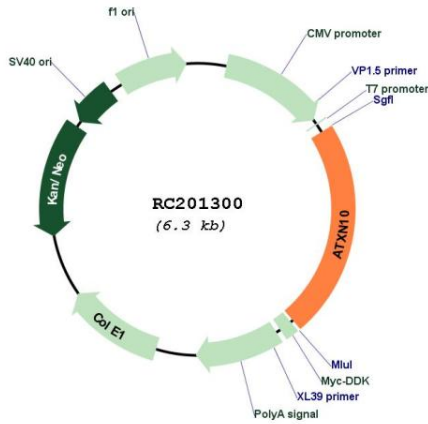
Locus ID: 25814

UniProt ID: [Q9UBB4](#)
Cytogenetics: 22q13.31

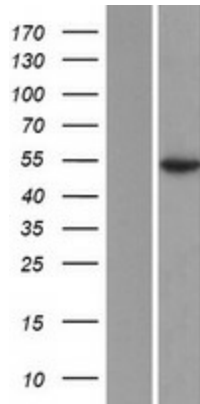
MW: 53.5 kDa

Gene Summary: This gene encodes a protein that may function in neuron survival, neuron differentiation, and neuritogenesis. These roles may be carried out via activation of the mitogen-activated protein kinase cascade. Expansion of an ATTCT repeat from 9-32 copies to 800-4500 copies in an intronic region of this locus has been associated with spinocerebellar ataxia, type 10. Alternatively spliced transcript variants have been described.[provided by RefSeq, Jul 2016]

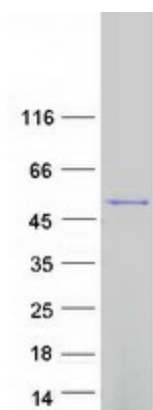
Product images:



Circular map for RC201300



Western blot validation of overexpression lysate (Cat# [LY415723]) using anti-DDK antibody (Cat# [TA50011-100]). Left: Cell lysates from untransfected HEK293T cells; Right: Cell lysates from HEK293T cells transfected with RC201300 using transfection reagent MegaTran 2.0 (Cat# [TT210002]).



Coomassie blue staining of purified ATXN10 protein (Cat# [TP301300]). The protein was produced from HEK293T cells transfected with ATXN10 cDNA clone (Cat# RC201300) using MegaTran 2.0 (Cat# [TT210002]).