

Product datasheet for RC201295

GDF15 (NM_004864) Human Tagged ORF Clone

Product data:

Product Type:	Expression Plasmids
Product Name:	GDF15 (NM_004864) Human Tagged ORF Clone
Tag:	Myc-DDK
Symbol:	GDF15
Synonyms:	GDF-15; MIC-1; MIC1; NAG-1; PDF; PLAB; PTGFB
Mammalian Cell Selection:	Neomycin
Vector:	pCMV6-Entry (PS100001)
E. coli Selection:	Kanamycin (25 ug/mL)
ORF Nucleotide Sequence:	>RC201295 ORF sequence Red=Cloning site Blue=ORF Green=Tags(s)

TTTTGTAATACGACTCACTATAGGGCGCCGGGAATTCGTCGACTGGATCCGGTACCGAGGAGATCTGCC
GCC**CGATCGCC**

ATGCCCGGGAAGAAGCTCAGGACGGTGAATGGCTCTCAGATGCTCCTGGTGTGCTGGTCTCTCGTGGC
TGCCGCATGGGGCGCCCTGTCTGGCCGAGGCGAGCCGCGCAAGTTCCCGGGACCCTCAGAGTTGCA
CTCCGAAGACTCCAGATCCGAGAGTTGCGAAACGCTACGAGGACCTGCTAACCAGGCTCGGGGCAAC
CAGAGCTGGGAAGATTGAAACACCGACCTCGTCCCGCCCTGCAGTCCGATACTCACGCCAGAAGTGC
GGCTGGGATCCGGCGCCACCTGCACCTGCGTATCTCTCGGGCCGCCCTCCCGAGGGGCTCCCCGAGGC
CTCCCGCCTTACCGGGCTCTGTTCCGGCTGTCCCGACGGCGTCAAGGTCGTGGGACGTGACACGACCG
CTGCGGGCTCAGCTCAGCCTTGAAGACCCAGGCGCCCGCGCTGCACCTGCGACTGTGCGCCGCGCGT
CGCAGTCGGACCAACTGCTGGCAGAATCTTCGTCGCGACGGCCCCAGCTGGAGTTGCACTTGGCGCCGA
AGCCGCCAGGGGGCGCCGAGAGCGCGTGCAGCAACGGGGACCACTGTCCGCTCGGGCCCGGGCGTTGC
TGCCGCTGCACACGGTCCGCGCGTGCCTGGAAGACCTGGGCTGGGCGGATTGGGTGCTGTGCCACGGG
AGGTGCAAGTGACCATGTGCATCGGCGCGTGCCGAGCCAGTTCGGGCGGCAACATGCACGCGCAGAT
CAAGACGAGCCTGCACCCCTGAAGCCCCGACACGGTGCCAGCGCCCTGCTGCGTGCCCGCCAGCTACAAT
CCCATGGTGCTCATTCAAAGACCGACACCGGGGTGTCGCTCCAGACCTATGATGACTTGTAGCCAAAG
ACTGCCACTGCATA

ACGCGTACGCGGGCGCTCGAGCAGAAACTCATCTCAGAAGAGGATCTGGCAGCAAATGATATCCTGGATT
ACAAGGATGACGACGATAAGGTTTAA



[View online »](#)

Protein Sequence: >RC201295 protein sequence
Red=Cloning site Green=Tags(s)

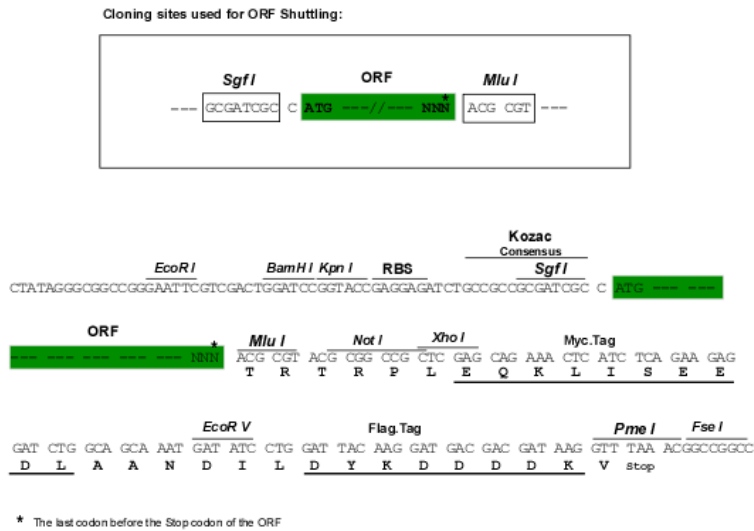
MPGQELRTVNGSQMLLVLLVLSWLPHGGLSLAEASRASFPGPSELHSEDSRFRELRKRYEDLLTRLRAN
 QSWEDSNTDLVPAPAVRILTPEVRLGSGGHLHLRISRAALPEGLPEASRLHRLFRLSPTASRSWDVTRP
 LRRQLSLARPQAPALHLRLSPPPSQSDQLLAESSARPQLEHLRPQAARGRRRARARNGDHCPLGPGRC
 CRLHTVRASLEDLGWADWVLSPREVQVTMCIGACPSQFRAANMHAQIKTSLHRLKPDTPAPCCVPASYN
 PMVLIQKTDGTGVSLLQTYDDLLAKDCHCI

TRTRPLEQKLISEEDLAANDILDYKDDDDKV

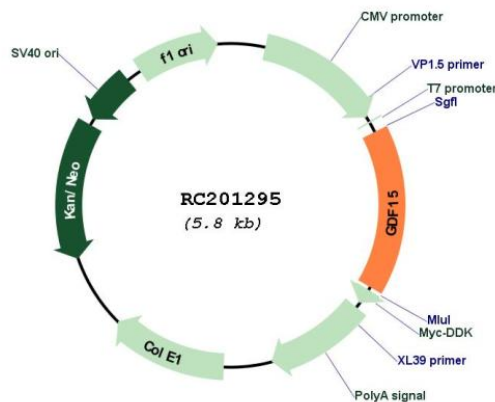
Chromatograms: https://cdn.origene.com/chromatograms/mk6193_h05.zip

Restriction Sites: SgfI-MluI

Cloning Scheme:

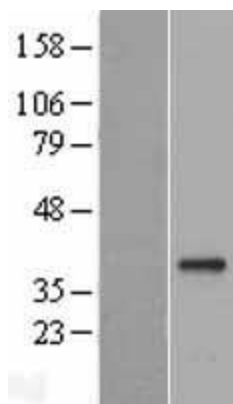


Plasmid Map:



ACCN: NM_004864

ORF Size:	924 bp
OTI Disclaimer:	The molecular sequence of this clone aligns with the gene accession number as a point of reference only. However, individual transcript sequences of the same gene can differ through naturally occurring variations (e.g. polymorphisms), each with its own valid existence. This clone is substantially in agreement with the reference, but a complete review of all prevailing variants is recommended prior to use. More info
OTI Annotation:	This clone was engineered to express the complete ORF with an expression tag. Expression varies depending on the nature of the gene.
Components:	The ORF clone is ion-exchange column purified and shipped in a 2D barcoded Matrix tube containing 10ug of transfection-ready, dried plasmid DNA (reconstitute with 100 ul of water).
Reconstitution Method:	<ol style="list-style-type: none">1. Centrifuge at 5,000xg for 5min.2. Carefully open the tube and add 100ul of sterile water to dissolve the DNA.3. Close the tube and incubate for 10 minutes at room temperature.4. Briefly vortex the tube and then do a quick spin (less than 5000xg) to concentrate the liquid at the bottom.5. Store the suspended plasmid at -20°C. The DNA is stable for at least one year from date of shipping when stored at -20°C.
RefSeq:	NM_004864.4
RefSeq Size:	1220 bp
RefSeq ORF:	927 bp
Locus ID:	9518
UniProt ID:	Q99988
Cytogenetics:	19p13.11
Domains:	TGF-beta
Protein Families:	Druggable Genome, Secreted Protein
MW:	34.1 kDa
Gene Summary:	This gene encodes a secreted ligand of the TGF-beta (transforming growth factor-beta) superfamily of proteins. Ligands of this family bind various TGF-beta receptors leading to recruitment and activation of SMAD family transcription factors that regulate gene expression. The encoded preproprotein is proteolytically processed to generate each subunit of the disulfide-linked homodimer. The protein is expressed in a broad range of cell types, acts as a pleiotropic cytokine and is involved in the stress response program of cells after cellular injury. Increased protein levels are associated with disease states such as tissue hypoxia, inflammation, acute injury and oxidative stress. [provided by RefSeq, Aug 2016]

Product images:

Western blot validation of overexpression lysate (Cat# [LY401529]) using anti-DDK antibody (Cat# [TA50011-100]). Left: Cell lysates from untransfected HEK293T cells; Right: Cell lysates from HEK293T cells transfected with RC201295 using transfection reagent MegaTran 2.0 (Cat# [TT210002]).