

Product datasheet for **RC201289**

TRIM32 (NM_012210) Human Tagged ORF Clone

Product data:

Product Type:	Expression Plasmids
Product Name:	TRIM32 (NM_012210) Human Tagged ORF Clone
Tag:	Myc-DDK
Symbol:	TRIM32
Synonyms:	BBS11; HT2A; LGMD2H; LGMDR8; TATIP
Mammalian Cell Selection:	Neomycin
Vector:	pCMV6-Entry (PS100001)
E. coli Selection:	Kanamycin (25 ug/mL)



[View online »](#)

ORF Nucleotide
Sequence:

>RC201289 ORF sequence
Red=Cloning site Blue=ORF Green=Tags(s)

TTTTGTAATACGACTCACTATAGGGCGGCCGGAATTCGTCGACTGGATCCGGTACCGAGGAGATCTGCC
GCCGCGATCGCC

ATGGCTGCAGCAGCAGCTTCTCACCTGAACCTGGATGCCCTCCGGAAGTCTAGAAATGCCCATCTGCA
TGGAGTCCTTACAGAAGAGCAGCTGCGTCCCAAGCTTCTGCACTGTGGCCATACCATCTGCCGCCAGTG
CCTGGAGAAGCTATTGGCCAGTAGCATCAATGGTGTCCGCTGTCCCTTTTGCAGCAAGATTACCCGCATA
ACCAGCTTGACCCAGCTGACAGACAATCTGACAGTGCTAAAGATCATTGATACAGCTGGGCTCAGCGAGG
CTGTGGGGCTGCTCATGTGTCCGCTCTGTGGGCGCGTCTGCCCGGCAATTCGCCGGAGCTGTGGTTT
GGTGTATGTGAGCCCTGCCGGGAGGCAGACCATCAGCCTCTGGCCACTGTACACTCCCTGTCAAAGAA
GCAGCTGAGGAGCGCGTCCGGACTTTGGAGAGAAGTAACTCGTCTGCGGGAATTATGGGGGAGCTGC
AGCGGCGGAAGGCAGCCTTGAAGGTGTCTCAAGGACCTTCAGGCAAGGTATAAAGCAGTTCTCCAGGA
GTATGGGCATGAGGAGCGCAGGGTCCAGGATGAGCTGGCTCGCTCTCGGAAGTTCTTACAGGCTCTTTG
GCTGAAGTTGAGAAGTCCAATAGTCAAGTGGTAGAGGAGCAGAGTTACCTGCTTAAACATTGCAGAGGTGC
AGGCTGTGTCTCGCTGTGACTACTTCTGGCCAAGATCAAGCAGGCAGATGTAGCACTACTGGAGGAGAC
AGCTGATGAGGAGGAGCCAGAGCTCACTGCCAGCTTGCCTCGGGAGCTCACCCCTGCAAGATGTGGAGCTC
CTTAAGGTAGGTCATGTTGGCCCCCTCAAATTTGGACAAGCTGTTAAGAAGCCCCGGACAGTTAACCTGG
AAGATTCTGGGCCATGGAGGCCACAGCGTCTGCTGCCTACCTCTGTTACTTTTAGAGAGATGGACAT
GAGCCCCGAGGAAGTGGTTGCCAGCCCTAGGGCCTCACCTGCTAAACAGCGGGTCTGAGGCAGCCTCC
AATATCCAGCAGTGCCTCTTCTCAAGAAGATGGGGGCCAAAGGCAGCACTCCAGGAATGTTCAATCTTC
CAGTCAGTCTCTACGTGACCAGTCAAGGTGAAGTACTAGTCGCTGACCGTGGTAACTATCGTATACAAGT
CTTTACCCGCAAAGGCTTTTTGAAGGAAATCCGCCGAGCCCCAGTGGCATTGATAGCTTTGTGCTAAGC
TTCCTTGGGGCAGATCTACCCAACCTCACTCCTCTCTCAGTGGCAATGAACTGCCAGGGGCTGATTGGTG
TGACTGACAGCTATGATAACTCCCTCAAGGTATATACCTTGGATGGCCACTGCGTGGCCTGTACAGGAG
CCAGCTGAGCAAACCATGGGGTATCACAGCCTTGCCATCTGGCCAGTTTGTAGTAACCGATGTGGAAGGT
GGAAAGCTTTGGTGTTCACAGTTGATCGAGGATCAGGGGTGGTCAAATACAGCTGCCTATGTAGTGCTG
TGCGGCCCAAATTTGTCACCTGTGATGCTGAGGGCACCGTCTACTTCACCCAGGGCTTAGGCCTCAATCT
GGAGAATCGGCAGAATGAGCACCACTGGAGGGTGGCTTTCCATTGGCTCTGTAGGCCCTGATGGGCAG
CTGGGTGCCAGATTAGCCACTTCTTCTCGGAGAATGAGGATTTCCGCTGCATTGCTGGCATGTGTGTGG
ATGCTCGTGGTATCTCATCGTGGCTGACAGTAGTCGCAAGGAAATTCCTCATTTCCTAAGGGTGGGGG
CTATAGTGTCTTATTGAGAGGGACTTACCTGTCCGGTGGGCATAGCCCTAACTCCTAAGGGGCAGCTG
CTGGTCTTGGACTGTTGGGATCATTGCATCAAGATCTACAGCTACCATCTGAGAAGATATCCACCCCA

ACGCGTACGCGGCCGCTCGAGCAGAACTCATCTCAGAAGAGGATCTGGCAGCAAATGATATCCTGGATT
ACAAGGATGACGACGATAAGGTTAA

Protein Sequence: >RC201289 protein sequence
Red=Cloning site Green=Tags(s)

```

MAAAAASHLNLDALREVLECPICMESFTEEQRLPKLLHCGHTICRQCLEKLLASSINGVRCPCFSKITRI
TSLTQLTDNLTVLKIIDTAGLSEAVGLLMCRSCGRRLPRQFCRSCGLVLCEPCREADHQPPGHCTLPVKE
AAEERRRDFGEKLRRLRELMGELQRRKAALLEGVSKDLQARYKAVLQEYGHERRVQDELARSRKF FTGSL
AEVEKSNQVVEEQSYLLNIAEVQAVSRCDYFLAKIKQADVALLEETADEEEPELTASLPRELTLQDVEL
LKVGHVGPLQIGQAVKKPRTVNVEDSWAMEATASAASTSVTFREMDMSPEEVVASPRASPAKQRGPEAAS
NIQQCLFLKMGAKGSTPGMFNLPVSLYVTSQGEVLVADRGNYRIQVFTKGFLEIRRSPSGIDSFVLS
FLGADLPNLTPLSVAMNCQGLIGVTDSDYNSLKVYTLGDGHCVACHRSQLSKPWGITALPSGQFVVTDVEG
GKLWCFTVDRGSGVVKYSCLCSAVRPFVTCDAEGTVYFTQGLNLENRQNEHHEGGFISGVSVPDQG
LGRQISHFFSENEDFRCIAGMCDVARGDLIVADSSRKEILHFPKGGGYSVLIREGLTCPVGIALTPKGQL
LVLDCWDHCIKIYSYHLRRYSTP
    
```

TRTRPLEQKLISEEDLAANDILDYKDDDDKV

Chromatograms: https://cdn.origene.com/chromatograms/mk6150_e01.zip

Restriction Sites: SgfI-MluI

Cloning Scheme:



ACCN: NM_012210

ORF Size: 1959 bp

OTI Disclaimer: The molecular sequence of this clone aligns with the gene accession number as a point of reference only. However, individual transcript sequences of the same gene can differ through naturally occurring variations (e.g. polymorphisms), each with its own valid existence. This clone is substantially in agreement with the reference, but a complete review of all prevailing variants is recommended prior to use. [More info](#)

OTI Annotation: This clone was engineered to express the complete ORF with an expression tag. Expression varies depending on the nature of the gene.

Components: The ORF clone is ion-exchange column purified and shipped in a 2D barcoded Matrix tube containing 10ug of transfection-ready, dried plasmid DNA (reconstitute with 100 ul of water).

Reconstitution Method:

1. Centrifuge at 5,000xg for 5min.
2. Carefully open the tube and add 100ul of sterile water to dissolve the DNA.
3. Close the tube and incubate for 10 minutes at room temperature.
4. Briefly vortex the tube and then do a quick spin (less than 5000xg) to concentrate the liquid at the bottom.
5. Store the suspended plasmid at -20°C. The DNA is stable for at least one year from date of shipping when stored at -20°C.

RefSeq: [NM_012210.4](#)

RefSeq Size: 3734 bp

RefSeq ORF: 1962 bp

Locus ID: 22954

UniProt ID: [Q13049](#)

Cytogenetics: 9q33.1

Domains: zf-B_box, NHL, RING

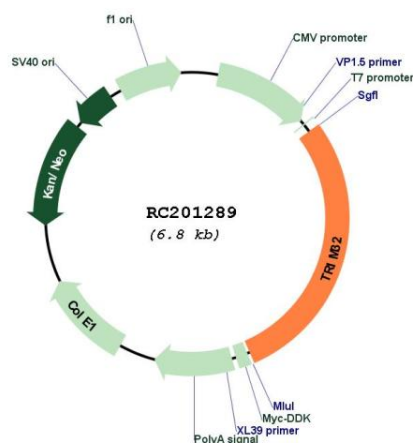
Protein Families: Transcription Factors

Protein Pathways: Ubiquitin mediated proteolysis

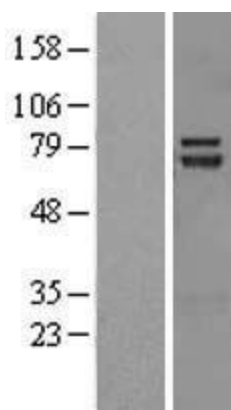
MW: 72 kDa

Gene Summary: The protein encoded by this gene is a member of the tripartite motif (TRIM) family. The TRIM motif includes three zinc-binding domains, a RING, a B-box type 1 and a B-box type 2, and a coiled-coil region. The protein localizes to cytoplasmic bodies. The protein has also been localized to the nucleus, where it interacts with the activation domain of the HIV-1 Tat protein. The Tat protein activates transcription of HIV-1 genes. [provided by RefSeq, Jul 2008]

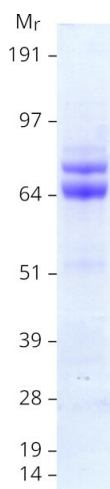
Product images:



Circular map for RC201289



Western blot validation of overexpression lysate (Cat# [LY420491]) using anti-DDK antibody (Cat# [TA50011-100]). Left: Cell lysates from untransfected HEK293T cells; Right: Cell lysates from HEK293T cells transfected with [RC223796] using transfection reagent MegaTran 2.0 (Cat# [TT210002]).



Coomassie blue staining of purified TRIM32 protein (Cat# [TP301289]). The protein was produced from HEK293T cells transfected with TRIM32 cDNA clone (Cat# RC201289) using MegaTran 2.0 (Cat# [TT210002]).