

## Product datasheet for RC201282

### APPD (PLEKHF1) (NM\_024310) Human Tagged ORF Clone

#### Product data:

Product Type:	Expression Plasmids
Product Name:	APPD (PLEKHF1) (NM_024310) Human Tagged ORF Clone
Tag:	Myc-DDK
Symbol:	APPD
Synonyms:	APPD; LAPF; PHAFIN1; ZFYVE15
Mammalian Cell Selection:	Neomycin
Vector:	pCMV6-Entry (PS100001)
E. coli Selection:	Kanamycin (25 ug/mL)
ORF Nucleotide Sequence:	>RC201282 ORF sequence Red=Cloning site Blue=ORF Green=Tags(s)

TTTTGTAATACGACTCACTATAGGGCGCCGGGAATTCGTCGACTGGATCCGGTACCGAGGAGATCTGCC  
GCC**CGATCGCC**

ATGGTGGACCACTTGCCAAACACGGAGATCAACAGCCAGCGCATCGCGGCAGTGGAGAGCTGCTTCGGGG  
CCTCGGGGACGCCGCTGGCGCTGCCAGGCCGAGTGTCTGCTGGGCGAGGGCGTGTGACCAAAGAGTGCCG  
CAAGAAGGCCAAGCCGCGCATCTTCTTCTCTTTAACGACATCCTGGTGTATGGCAGCATCGTGTCAAC  
AAGCGCAAGTACCGCAGCCAGCACATCATCCCCCTGGAGGAGTACACTGGAGCTGTTGCCGGAGACGC  
TGCAGGCCAAGAACCGCTGGATGATCAAGACGGCCAAGAAGTCCTTTGTGGTGTGCGCCGCTCCGCTAC  
GGAGCGCCAGGAATGGATTAGCCACATCGAGGAGTGTGCTGCGGGCGCAACTGAGGGCCACGGGCCGCCG  
CCCAGCACGGAGCACGGCCACCCTGGATCCCCGACAAGGCCACGGACATCTGCATGCGTGCACCGCAGA  
CGCGCTTCTGCCCTCACGAGGCGCCACCACTGCCGCAAGTGCAGGCTTCGTGGTCTGCGCTGAGTGCTC  
GCGCCAGCGCTTCTGCTCCCGCCTGTCCCCAAGCCCGTGCAGCTGTCAGCCTCTGCTACCGCGAA  
CTGGCCGCCAGCAGCGGCAGGAGGAGGCGGAGGAGCAGGGCGCGGGGTCCCCAGGGCAGCCAGCCCACC  
TGGCCCGCCCATCTGCGGAGCGTCCAGTGGAGATGACGATGACTCCGACGAGGACAAGGAGGGCAGCAG  
GGACGGCGACTGGCCAGCAGCGTGGAGTTCTACGCCTCGGGGTGGCCCTGGTCTGCCTTCCACAGC

**ACGCGT**ACGCGGCCGCTCGAGCAGAAACTCATCTCAGAAGAGGATCTGGCAGCAAATGATATCCTGGATT  
ACAAGGATGACGACGATAAGGTTTAA



[View online »](#)

**Protein Sequence:** >RC201282 protein sequence  
 Red=Cloning site Green=Tags(s)

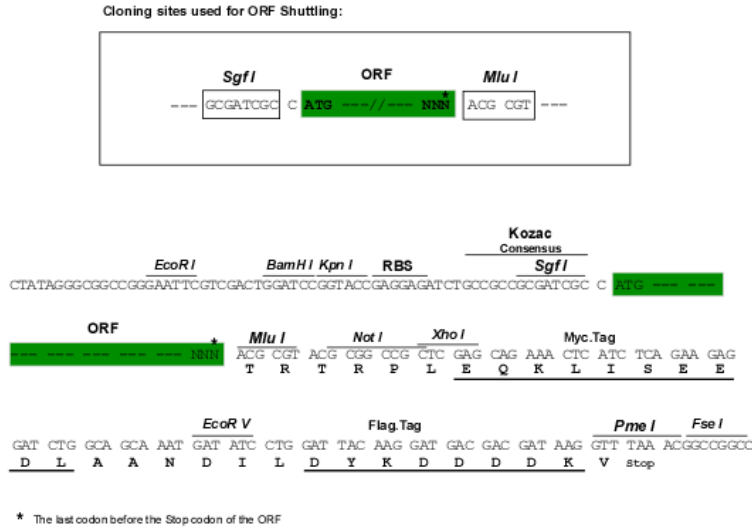
MVDHLANTEINSQRIAAVESCFGASGQPLALPGRVLLGEGVLTKECRKKAKPRIFFLFNDILVYGSIVLN  
 KRKYRSQHIIPLEEVTLLELLPETLQAKNRWMIKTAKKSFVVSAAATERQEWISHIEECVRRQLRATGRP  
 PSTEHAAPWIPDKATDICMRCTQTRFSALTRRHCRKCGFVCAECSRQRFLLPRLSPKPVVCSLCYRE  
 LAAQQRQEAEQAGSPGQPAHLARPICGASSGDDDDSDDEDKEGSRDGDWPPSSVEFYASGVAWSAFHS

TRTRPLEQKLISEEDLAANDILDYKDDDDKV

**Chromatograms:** [https://cdn.origene.com/chromatograms/mk6143\\_e04.zip](https://cdn.origene.com/chromatograms/mk6143_e04.zip)

**Restriction Sites:** SgfI-MluI

**Cloning Scheme:**



**ACCN:** NM\_024310

**ORF Size:** 837 bp

**OTI Disclaimer:** The molecular sequence of this clone aligns with the gene accession number as a point of reference only. However, individual transcript sequences of the same gene can differ through naturally occurring variations (e.g. polymorphisms), each with its own valid existence. This clone is substantially in agreement with the reference, but a complete review of all prevailing variants is recommended prior to use. [More info](#)

**OTI Annotation:** This clone was engineered to express the complete ORF with an expression tag. Expression varies depending on the nature of the gene.

**Components:** The ORF clone is ion-exchange column purified and shipped in a 2D barcoded Matrix tube containing 10ug of transfection-ready, dried plasmid DNA (reconstitute with 100 ul of water).

**Reconstitution Method:**

1. Centrifuge at 5,000xg for 5min.
2. Carefully open the tube and add 100ul of sterile water to dissolve the DNA.
3. Close the tube and incubate for 10 minutes at room temperature.
4. Briefly vortex the tube and then do a quick spin (less than 5000xg) to concentrate the liquid at the bottom.
5. Store the suspended plasmid at -20°C. The DNA is stable for at least one year from date of shipping when stored at -20°C.

**RefSeq:** [NM\\_024310.5](#)

**RefSeq Size:** 1774 bp

**RefSeq ORF:** 840 bp

**Locus ID:** 79156

**UniProt ID:** [Q96S99](#)

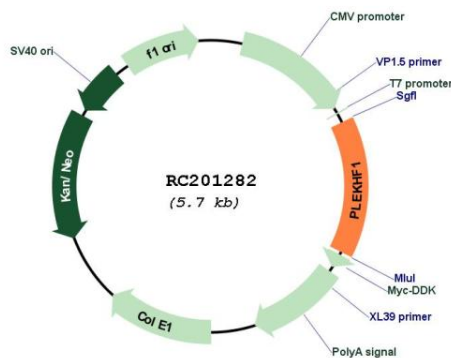
**Cytogenetics:** 19q12

**Domains:** FYVE, PH

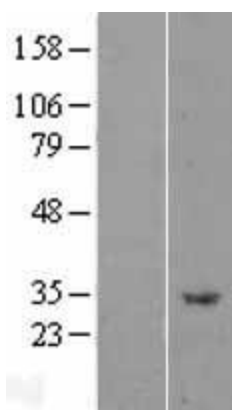
**MW:** 31.2 kDa

**Gene Summary:** May induce apoptosis through the lysosomal-mitochondrial pathway. Translocates to the lysosome initiating the permeabilization of lysosomal membrane (LMP) and resulting in the release of CTSD and CTSL to the cytoplasm. Triggers the caspase-independent apoptosis by altering mitochondrial membrane permeabilization (MMP) resulting in the release of PDCD8. [UniProtKB/Swiss-Prot Function]

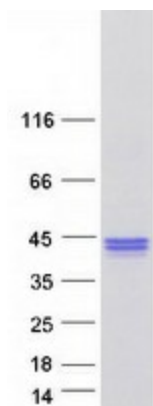
## Product images:



Circular map for RC201282



Western blot validation of overexpression lysate (Cat# [LY402983]) using anti-DDK antibody (Cat# [TA50011-100]). Left: Cell lysates from untransfected HEK293T cells; Right: Cell lysates from HEK293T cells transfected with RC201282 using transfection reagent MegaTran 2.0 (Cat# [TT210002]).



Coomassie blue staining of purified PLEKHF1 protein (Cat# [TP301282]). The protein was produced from HEK293T cells transfected with PLEKHF1 cDNA clone (Cat# RC201282) using MegaTran 2.0 (Cat# [TT210002]).