

Product datasheet for **RC201280**

TUBB6 (NM_032525) Human Tagged ORF Clone

Product data:

Product Type:	Expression Plasmids
Product Name:	TUBB6 (NM_032525) Human Tagged ORF Clone
Tag:	Myc-DDK
Symbol:	TUBB6
Synonyms:	FPVEPD; HsT1601; TUBB-5
Mammalian Cell Selection:	Neomycin
Vector:	pCMV6-Entry (PS100001)
E. coli Selection:	Kanamycin (25 ug/mL)



[View online »](#)

ORF Nucleotide Sequence:

>RC201280 ORF sequence
 Red=Cloning site Blue=ORF Green=Tags(s)

TTTTGTAATACGACTCACTATAGGGCGGCCGGGAATTCGTCGACTGGATCCGGTACCGAGGAGATCTGCC
 GCC**CGCATCGCC**

ATGAGGGAGATCGTGCACATCCAGGCGGGCCAGTGCGGGAACCAGATCGGCACCAAGTTTTGGGAAGTGA
 TCAGCGATGAGCACGGCATCGACCCGGCCGGAGGCTACGTGGGAGACTCGGCGCTGCAGCTGGAGAGAAT
 CAACGTCTACTACAATGAGTCATCGTCTCAGAAATATGTGCCAGGGCCGCCCTGGTGGACTTAGAGCCA
 GGCACCATGGACAGCGTGCAGTCTGGGCTTTTGGGAGCTTTTCCGGCCTGACAACTTCATCTTTGGCC
 AGACGGGTGCAGGGAACAACGGGCGAAAGGGCACTACACGGAGGGCGCGGAGCTGGTGGACGAGTGT
 GGACGTGGTGCAGGAGGAGTGCAGCACTGCGACTGCCTGCAGGGCTTCCAGCTCACGCACTCGTGGGC
 GGGCGCACGGCTCAGGCATGGGACGCTGCTCATCAGCAAGATCCGTGAGGAGTCCCGGACCGCATCA
 TGAACACCTTCAGCGTCATGCCCTCGCCAAGGTGTCGGACACGGTGGTGGAGCCCTACAATGCCACACT
 GTCGGTGCACAGCTGGTGGAGAATACAGACGAGACCTACTGCATCGACAACGAGGCGCTCTATGACATC
 TGCTTCCGCACTCTGAAGCTGACAACGCCACCTACGGGGACCTCAACCACCTGGTGTCCGCCACCATGA
 GTGGGGTCAACACCTCGCTGCGCTTCCCGGGCCAGCTCAATGCTGACCTGCGCAAGCTGGCGGTGAACAT
 GGTGCCCTTCCCGCGCTGCACTTCTTCATGCCTGGCTTCGCGCCGCTCACCCAGCCCGCGGACCCAGCAG
 TACCGGGCCCTGACCGTGCCTGAGCTCACCCAGCAGATGTTCCGACGCCAGGAACATGATGGCCGCTGCG
 ATCCGCGCCATGGCCGCTACCTGACCGTGGCCACCGTGTTCGCGGGGCCATGTCATGAAGGAGGTGGA
 CGAGCAGATGCTGGCCATCCAGAGTAAGAACAGCAGCTACTTCGTGGAGTGGATTCCCAACAACGTGAAG
 GTGGCCGTGTGCGACATCCCGCCCCGCGCCTGAAGATGGCTCCACCTTCATCGGCAACAGCACGGCCA
 TCCAGGAGCTGTTCAAGCGCATCTCCGAGCAGTCTCAGCCATGTTCCGGCGCAAGGCCTTCTGCACTG
 GTTCACGGGTGAGGGCATGGATGAAATGGAGTTACCGAGGCGGAGAGCAACATGAACGACCTGGTATCC
 GAGTACCAGCAGTACCAGGATGCCACCGCAATGACGGGGAGGAAGCTTTTGAGGATGAGGAAGAGGAGA
 TCGATGGA

ACGCGTACGCGGCCGCTCGAGCAGAACTCATCTCAGAAGAGGATCTGGCAGCAAATGATATCCTGGATT
 ACAAGGATGACGACGATAAGGTTTAA

Protein Sequence:

>RC201280 protein sequence
 Red=Cloning site Green=Tags(s)

MREIVHIQAGQCGNQIGTKFWEVISDEHGIDPAGGYVGDALQLERINVYNESSQKYVPRAALVDLEP
 GTMDSVRSRPFQGLFRPDNFIQGTGAGNNWAKGHYTEGAELVDAVLDVVRKECEHCDCQLQGFQLTHSLG
 GGTGSGMGTLLISKIREEFDRIMNTFSVMPSPKVSdTVEPYNATLSVHQLVENTDETYCIDNEALYDI
 CFRTLKLTPTTYGDLNHLVSATMSGVTTSLRFPQGLNADLRKLA VNMVFPRLHFFMPGFAPLTSRGSQQ
 YRALTVPELTQQMFDARNMMAACDRHGRYLTVATVFRGPMMSKEVDEQMLAIQSKNSSYFVEWIPNNVK
 VAVCDIPRGLKMASTFIGNSTAIQELFKRISEQFSAMFRRKAFLHWFTGEGMDEMEFTEAESNMNDLVS
 EYQYQDATANDGEEAFDEEEEEIDG

TRTRPLEQ**KL**ISEEDLAANDILDYKDDDDKV

Chromatograms:

https://cdn.origene.com/chromatograms/mk6390_g02.zip

Restriction Sites:

Sgfl-MluI

Cloning Scheme:


ACCN: NM_032525

ORF Size: 1338 bp

OTI Disclaimer: The molecular sequence of this clone aligns with the gene accession number as a point of reference only. However, individual transcript sequences of the same gene can differ through naturally occurring variations (e.g. polymorphisms), each with its own valid existence. This clone is substantially in agreement with the reference, but a complete review of all prevailing variants is recommended prior to use. [More info](#)

OTI Annotation: This clone was engineered to express the complete ORF with an expression tag. Expression varies depending on the nature of the gene.

Components: The ORF clone is ion-exchange column purified and shipped in a 2D barcoded Matrix tube containing 10ug of transfection-ready, dried plasmid DNA (reconstitute with 100 ul of water).

Reconstitution Method:

1. Centrifuge at 5,000xg for 5min.
2. Carefully open the tube and add 100ul of sterile water to dissolve the DNA.
3. Close the tube and incubate for 10 minutes at room temperature.
4. Briefly vortex the tube and then do a quick spin (less than 5000xg) to concentrate the liquid at the bottom.
5. Store the suspended plasmid at -20°C. The DNA is stable for at least one year from date of shipping when stored at -20°C.

RefSeq: [NM_032525.3](#)

RefSeq Size: 1843 bp

RefSeq ORF: 1341 bp

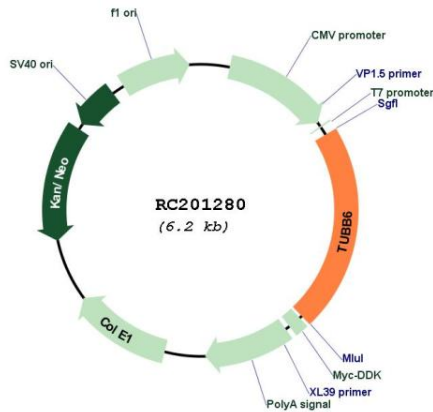
Locus ID: 84617

UniProt ID: [Q9BUF5](#)

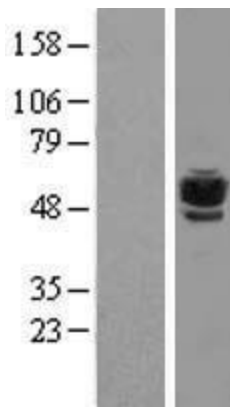
Cytogenetics: 18p11.21

Domains: tubulin
Protein Families: Druggable Genome
Protein Pathways: Gap junction, Pathogenic Escherichia coli infection
MW: 49.9 kDa
Gene Summary: Tubulin is the major constituent of microtubules. It binds two moles of GTP, one at an exchangeable site on the beta chain and one at a non-exchangeable site on the alpha chain. [UniProtKB/Swiss-Prot Function]

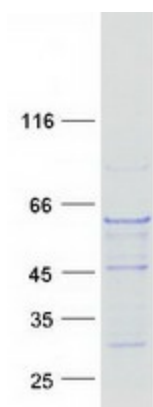
Product images:



Circular map for RC201280



Western blot validation of overexpression lysate (Cat# [LY410056]) using anti-DDK antibody (Cat# [TA50011-100]). Left: Cell lysates from untransfected HEK293T cells; Right: Cell lysates from HEK293T cells transfected with RC201280 using transfection reagent MegaTran 2.0 (Cat# [TT210002]).



Coomassie blue staining of purified TUBB6 protein (Cat# [TP301280]). The protein was produced from HEK293T cells transfected with TUBB6 cDNA clone (Cat# RC201280) using MegaTran 2.0 (Cat# [TT210002]).