

Product datasheet for **RC201277**

M6PR (NM_002355) Human Tagged ORF Clone

Product data:

Product Type: Expression Plasmids
Product Name: M6PR (NM_002355) Human Tagged ORF Clone
Tag: Myc-DDK
Symbol: M6PR
Synonyms: CD-M6PR; CD-MPR; MPR-46; MPR 46; MPR46; SMPR
Mammalian Cell Selection: Neomycin
Vector: pCMV6-Entry (PS100001)
E. coli Selection: Kanamycin (25 ug/mL)
ORF Nucleotide Sequence: >RC201277 ORF sequence
Red=Cloning site Blue=ORF Green=Tags(s)

TTTTGTAATACGACTCACTATAGGGCGGCCGGAATTCGTCGACTGGATCCGGTACCGAGGAGATCTGCC
GCC**CGGATCGCC**

ATGTTCCCTTTCTACAGCTGCTGGAGGACTGGACTGCTACTACTCCTGGCTGTGGCAGTGAGAGAAT
CCTGGCAGACAGAAGAAAAAAGTTGCGACTTGGTAGGAGAAAAGGTAAGAGTCAGAGAAAAGTTGGC
TCTAGTGAAGAGGCTGAAACCACTGTTTAAATAAAAGCTTTGAGAGCACTGTGGCCAGGGTTCAGACACA
TACATCTACATCTTCAGGGTGTGCCGGGAAGCTGGCAACCACACTTCTGGGCAGGCCTGGTGCAATCA
ACAAAAGTAATGGGAAGGAGACAGTGGTAGGGAGACTCAACGAGACTCACATCTTCAACGGAAGTAATTG
GATCATGCTGATCTATAAAGGGGTGATGAATATGACAACCACTGTGGCAAGGAGCAGCGTCGTGCAGTG
GTGATGATCTCCTGCAATCGACACACCCTAGCGGACAATTTAAACCTGTGTCTGAGGAGCGTGGCAAAG
TCCAAGATTGTTTCTACCTCTTTGAGATGGATAGCAGCCTGGCCTGTTACCAGAGATCTCCACCTCAG
TGTGGGTTCCATCTTACTTGTACGTTTGCATCACTGGTTGTGTATGTTGTTGGGGGTTTCTATAC
CAGCGACTGGTAGTGGGAGCCAAAGGAATGGAGCAGTTTCCCCACTTAGCCTTCTGGCAGGATCTTGGCA
ACCTGGTAGCAGATGGCTGTGACTTTGTCTGCCGTTCTAAACCTCGAAATGTGCCTGCAGCATATCGTGG
TGTGGGGATGACCAGCTGGGGGAGGAGTCAGAAGAAAGGGATGACCATTATTACCAATG

**ACGCGTACGCGGCCGCTCGAGCAGAAACTCATCTCAGAAGAGGATCTGGCAGCAAATGATATCCTGGATT
ACAAGGATGACGACGATAAGGTTTAA**



[View online »](#)

Reconstitution Method:

1. Centrifuge at 5,000xg for 5min.
2. Carefully open the tube and add 100ul of sterile water to dissolve the DNA.
3. Close the tube and incubate for 10 minutes at room temperature.
4. Briefly vortex the tube and then do a quick spin (less than 5000xg) to concentrate the liquid at the bottom.
5. Store the suspended plasmid at -20°C. The DNA is stable for at least one year from date of shipping when stored at -20°C.

RefSeq: [NM_002355.4](#)

RefSeq Size: 2583 bp

RefSeq ORF: 834 bp

Locus ID: 4074

UniProt ID: [P20645](#)

Cytogenetics: 12p13.31

Domains: Man-6-P_recep

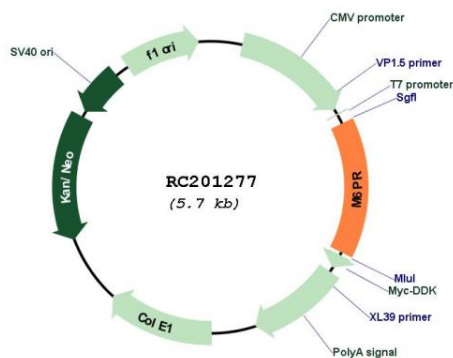
Protein Families: Druggable Genome, Transmembrane

Protein Pathways: Lysosome

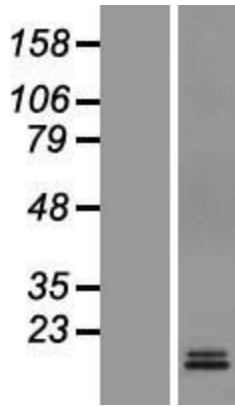
MW: 31 kDa

Gene Summary: This gene encodes a member of the P-type lectin family. P-type lectins play a critical role in lysosome function through the specific transport of mannose-6-phosphate-containing acid hydrolases from the Golgi complex to lysosomes. The encoded protein functions as a homodimer and requires divalent cations for ligand binding. Alternatively spliced transcript variants encoding multiple isoforms have been observed for this gene. A pseudogene of this gene is located on the long arm of chromosome X. [provided by RefSeq, May 2011]

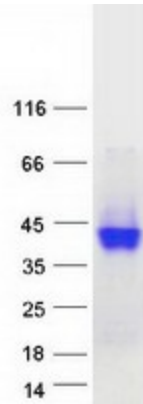
Product images:



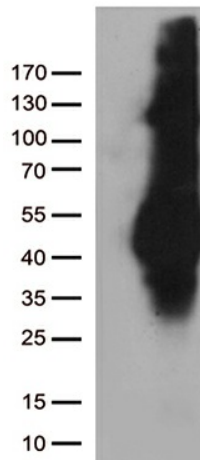
Circular map for RC201277



Western blot validation of overexpression lysate (Cat# [LY419372]) using anti-DDK antibody (Cat# [TA50011-100]). Left: Cell lysates from untransfected HEK293T cells; Right: Cell lysates from HEK293T cells transfected with RC201277 using transfection reagent MegaTran 2.0 (Cat# [TT210002]).



Coomassie blue staining of purified M6PR protein (Cat# [TP301277]). The protein was produced from HEK293T cells transfected with M6PR cDNA clone (Cat# RC201277) using MegaTran 2.0 (Cat# [TT210002]).



HEK293T cells were transfected with the pCMV6-ENTRY control (Cat# [PS100001], Left lane) or pCMV6-ENTRY M6PR (Cat# RC201277, Right lane) cDNA for 48 hrs and lysed. Equivalent amounts of cell lysates (5 ug per lane) were separated by SDS-PAGE and immunoblotted with anti-M6PR (Cat# [TA812721])(1:500). Positive lysates [LY419372] (100ug) and [LC419372] (20ug) can be purchased separately from OriGene.