

Product datasheet for RC201272

BAG1 (NM_004323) Human Tagged ORF Clone

Product data:

Product Type: Expression Plasmids
 Product Name: BAG1 (NM_004323) Human Tagged ORF Clone
 Tag: Myc-DDK
 Symbol: BAG1
 Synonyms: BAG-1; HAP; RAP46
 Mammalian Cell Selection: Neomycin
 Vector: pCMV6-Entry (PS100001)
 E. coli Selection: Kanamycin (25 ug/mL)
 ORF Nucleotide Sequence: >RC201272 ORF sequence
 Red=Cloning site Blue=ORF Green=Tags(s)

TTTTGTAATACGACTCACTATAGGGCGGCCGGAATTCGTCGACTGGATCCGGTACCGAGGAGATCTGCC
 GCC**CGATCGCC**

CTGGCTCAGCGCGGGGGCGCGGAGACCGCGAGGCGACCGGGAGCGGCTGGGTTCCCGGCTGCGCGCCC
 TTCGGCCAGGCCGGGAGCCGCGCCAGTCGGAGCCCCGGCCAGCGTGGTCCGCCTCCCTCTCGGCGTCC
 ACCTGCCCGGAGTACTGCCAGCGGGCATGACCGACCCACCAGGGGCGCCGCCCGGCGCTCGCAGGCCC
 CGGATGAAGAAGAAAACCGGCGCGCTCGACCCGGAGCGAGGAGTTGACCCGGAGCGAGGAGTTGACCC
 TGAGTGAGGAAGCGACCTGGAGTGAAGAGCGACCCAGAGTGAGGAGGCGACCCAGGGCGAAGAGATGAA
 TCGGAGCCAGGAGGTGACCCGGGACGAGGAGTCGACCCGGAGCGAGGAGGTGACCCAGGGAGAAAATGGCG
 GCAGCTGGGCTCACCGTACTGTACCCACAGCAATGAGAAGCACGACCTTCATGTTACCTCCCAGCAGG
 GCAGCAGTGAACCAAGTGTCCAAGACCTGGCCAGGTTGTTGAAGAGGTCATAGGGGTTCCACAGCTTT
 TCAGAACTCATATTTAAGGGAAAATCTCTGAAGGAAATGGAAACACCGTTGTCAGCACTTGAATACAA
 GATGGTTGCCGGTCAATGTTAATTGGGAAAAAGAACAGTCCACAGGAAGAGGTTGAACTAAAGAAGTTGA
 AACATTTGGAGAAGTCTGTGGAGAAGATAGCTGACCAGCTGGAAGAGTTGAATAAAGAGCTTACTGGAAT
 CCAGCAGGTTTTCTGCCAAGGATTTGCAAGCTGAAGCTCTCTGCAACTTGATAGGAGAGTAAAAGCC
 ACAATAGAGCAGTTTATGAAGATCTTGGAGGAGATTGACACACTGATCCTGCCAGAAAATTTCAAAGACA
 GTAGATTGAAAAGGAAAGGCTTGGTAAAAAAGGTTCAAGGATTCCCTAGCCGAGTGTGACACAGTGGAGCA
 GAACATCTGCCAGGAGACTGAGCGGCTGCACTACAACTTTGCCCTGGCCGAG

ACGCGTACGCGGCCGCTCGAGCAGAACTCATCTCAGAAGAGGATCTGGCAGCAATGATATCCTGGATT
 ACAAGGATGACGACGATAAGGTTTAA



[View online »](#)

Protein Sequence: >RC201272 protein sequence
Red=Cloning site Green=Tags(s)

LAQRGGARRPRGDRERLGSRLRALRPGREPRQSEPPAQRGPPPSRRPPARSTASGHDRPTRGAAAGARRP
 RMKKKTRRRSTRSEELTRSEELTLSEEATWSEEATQSEEATQGEEMNRSQEVTRDEESTRSEEVTREEMA
 AAGLTVTVTHSNEKHDLHVTSQQGSSEPVVQDLAQVVEEVIGVPQSFQKLIKFKGKSLKEMETPLSALGIQ
 DGCRVMLIGKKNSPQEEVELKKLKHLEKSVYEKIADQLEELNKELTGIQQGF LPKDLQAEALCKLDRRVKA
 TIEQFMKILEEIDTLILPENFKDSRLKRRKGLVKKVQAF LAECDTVEQNICQETERLQSTNFALAE

TRTRPLEQKLISEEDLAANDILDYKDDDDKV

Chromatograms: https://cdn.origene.com/chromatograms/mk6195_d04.zip

Restriction Sites: SgfI-MluI

Cloning Scheme:



ACCN: NM_004323

ORF Size: 1035 bp

OTI Disclaimer: The molecular sequence of this clone aligns with the gene accession number as a point of reference only. However, individual transcript sequences of the same gene can differ through naturally occurring variations (e.g. polymorphisms), each with its own valid existence. This clone is substantially in agreement with the reference, but a complete review of all prevailing variants is recommended prior to use. [More info](#)

OTI Annotation: This clone was engineered to express the complete ORF with an expression tag. Expression varies depending on the nature of the gene.

Components: The ORF clone is ion-exchange column purified and shipped in a 2D barcoded Matrix tube containing 10ug of transfection-ready, dried plasmid DNA (reconstitute with 100 ul of water).

Reconstitution Method:

1. Centrifuge at 5,000xg for 5min.
2. Carefully open the tube and add 100ul of sterile water to dissolve the DNA.
3. Close the tube and incubate for 10 minutes at room temperature.
4. Briefly vortex the tube and then do a quick spin (less than 5000xg) to concentrate the liquid at the bottom.
5. Store the suspended plasmid at -20°C. The DNA is stable for at least one year from date of shipping when stored at -20°C.

Note: Plasmids are not sterile. For experiments where strict sterility is required, filtration with 0.22um filter is required.

RefSeq: [NM_004323.5](#)

RefSeq Size: 3885 bp

RefSeq ORF: 1038 bp

Locus ID: 573

UniProt ID: [Q99933](#)

Cytogenetics: 9p13.3

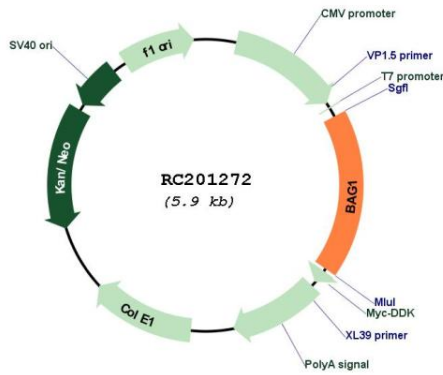
Domains: UBQ, BAG

Protein Families: Druggable Genome

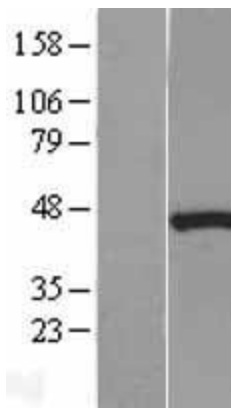
MW: 38.9 kDa

Gene Summary: The oncogene BCL2 is a membrane protein that blocks a step in a pathway leading to apoptosis or programmed cell death. The protein encoded by this gene binds to BCL2 and is referred to as BCL2-associated athanogene. It enhances the anti-apoptotic effects of BCL2 and represents a link between growth factor receptors and anti-apoptotic mechanisms. Multiple protein isoforms are encoded by this mRNA through the use of a non-AUG (CUG) initiation codon, and three alternative downstream AUG initiation codons. A related pseudogene has been defined on chromosome X. [provided by RefSeq, Feb 2010]

Product images:



Circular map for RC201272



Western blot validation of overexpression lysate (Cat# [LY401375]) using anti-DDK antibody (Cat# [TA50011-100]). Left: Cell lysates from untransfected HEK293T cells; Right: Cell lysates from HEK293T cells transfected with RC201272 using transfection reagent MegaTran 2.0 (Cat# [TT210002]).