

Product datasheet for **RC201271**

EIF1 (NM_005801) Human Tagged ORF Clone

Product data:

Product Type: Expression Plasmids
Product Name: EIF1 (NM_005801) Human Tagged ORF Clone
Tag: Myc-DDK
Symbol: EIF1
Synonyms: A121; EIF-1; EIF1A; ISO1; SUI1
Vector: pCMV6-Entry (PS100001)
E. coli Selection: Kanamycin (25 ug/mL)
Cell Selection: Neomycin
ORF Nucleotide Sequence: >RC201271 ORF sequence
Red=Cloning site Blue=ORF Green=Tags(s)

TTTTGTAATACGACTCACTATAGGGCGGCCGGAATTCGTCGACTGGATCCGGTACCGAGGAGATCTGCC
GCC**GCGATCGCC**

ATGTCCGCTATCCAGAACCTCCACTCTTTGACCCCTTTGCTGATGCAAGTAAGGGTGATGACCTGCTTC
CTGCTGGCACTGAGGATTATATCCATATAAGAATCAACAGAGAAACGGCAGGAAGACCCTTACTACTGT
CCAAGGGATCGTGATGATTACGATAAAAAGAACTAGTGAAGGGGTTTAAAGAAAAGTTTGCCTGCAAT
GGTACTGTAATTGAGCATCCGGAATATGGAGAAGTAATTCAGCTACAGGGTGACCAACGCAAGAACATAT
GCCAGTTCCTCGTAGAGATTGGACTGGCTAAGGACGATCAGCTGAAGGTTTATGGGTTT

ACGCGTACGCGGCCGCTCGAGCAGAACTCATCTCAGAAGAGGATCTGGCAGCAAATGATATCCTGGATT
ACAAGGATGACGACGATAAAGGTTTAA

Protein Sequence: >RC201271 protein sequence
Red=Cloning site Green=Tags(s)

MSAIQNLHSFDPFADASKGDDLLPAGTEDYIHIRIQQRNGRKTLLTVQGIADDYDKKKLVKAFKKKIFACN
GTVIEHPEYGEVIQLQGDQRKNICQFLVEIGLAKDDQLKVHGF

TRTRPLEQK**L**ISEEDLAANDILDYKDDDDKV

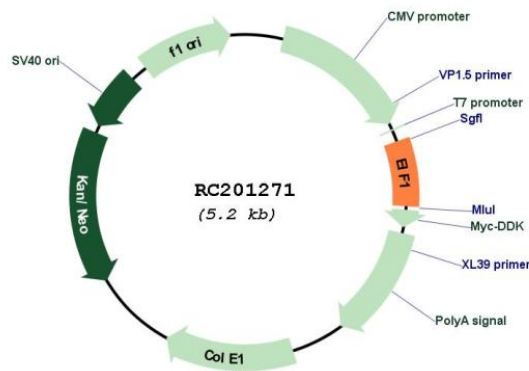
Chromatograms: https://cdn.origene.com/chromatograms/mk6143_g03.zip

Restriction Sites: Sgfl-MluI



[View online »](#)

Cloning Scheme:

Plasmid Map:


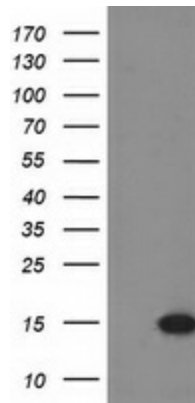
ACCN: NM_005801

ORF Size: 339 bp

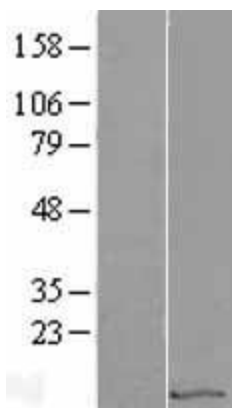
OTI Disclaimer: The molecular sequence of this clone aligns with the gene accession number as a point of reference only. However, individual transcript sequences of the same gene can differ through naturally occurring variations (e.g. polymorphisms), each with its own valid existence. This clone is substantially in agreement with the reference, but a complete review of all prevailing variants is recommended prior to use. [More info](#)

OTI Annotation:	This clone was engineered to express the complete ORF with an expression tag. Expression varies depending on the nature of the gene.
Components:	The ORF clone is ion-exchange column purified and shipped in a 2D barcoded Matrix tube containing 10ug of transfection-ready, dried plasmid DNA (reconstitute with 100 ul of water).
Reconstitution Method:	<ol style="list-style-type: none">1. Centrifuge at 5,000xg for 5min.2. Carefully open the tube and add 100ul of sterile water to dissolve the DNA.3. Close the tube and incubate for 10 minutes at room temperature.4. Briefly vortex the tube and then do a quick spin (less than 5000xg) to concentrate the liquid at the bottom.5. Store the suspended plasmid at -20°C. The DNA is stable for at least one year from date of shipping when stored at -20°C.
RefSeq:	NM_005801.4
RefSeq Size:	1326 bp
RefSeq ORF:	342 bp
Locus ID:	10209
UniProt ID:	P41567
Cytogenetics:	17q21.2
Domains:	SUI1
MW:	12.7 kDa
Gene Summary:	Necessary for scanning and involved in initiation site selection. Promotes the assembly of 48S ribosomal complexes at the authentic initiation codon of a conventional capped mRNA. [UniProtKB/Swiss-Prot Function]

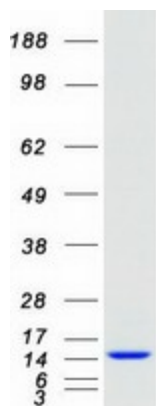
Product images:



HEK293T cells were transfected with the pCMV6-ENTRY control (Cat# [PS100001], Left lane) or pCMV6-ENTRY EIF1 (Cat# RC201271, Right lane) cDNA for 48 hrs and lysed. Equivalent amounts of cell lysates (5 ug per lane) were separated by SDS-PAGE and immunoblotted with anti-EIF1 (Cat# [TA502844]). Positive lysates [LY401762] (100ug) and [LC401762] (20ug) can be purchased separately from OriGene.



Western blot validation of overexpression lysate (Cat# [LY401762]) using anti-DDK antibody (Cat# [TA50011-100]). Left: Cell lysates from untransfected HEK293T cells; Right: Cell lysates from HEK293T cells transfected with RC201271 using transfection reagent MegaTran 2.0 (Cat# [TT210002]).



Coomassie blue staining of purified EIF1 protein (Cat# [TP301271]). The protein was produced from HEK293T cells transfected with EIF1 cDNA clone (Cat# RC201271) using MegaTran 2.0 (Cat# [TT210002]).