

Product datasheet for RC201268L2

PAFAH1B3 (NM_002573) Human Tagged Lenti ORF Clone

Product data:

Product Type:	Expression Plasmids
Product Name:	PAFAH1B3 (NM_002573) Human Tagged Lenti ORF Clone
Tag:	mGFP
Symbol:	PAFAH1B3
Synonyms:	PAFAHG
Mammalian Cell Selection:	None
Vector:	pLenti-C-mGFP (PS100071)
E. coli Selection:	Chloramphenicol (34 ug/mL)
ORF Nucleotide Sequence:	The ORF insert of this clone is exactly the same as(RC201268).
Restriction Sites:	SgfI-MluI
Cloning Scheme:	

Cloning sites used for ORF Shuttling:



* The last codon before the Stop codon of the ORF.

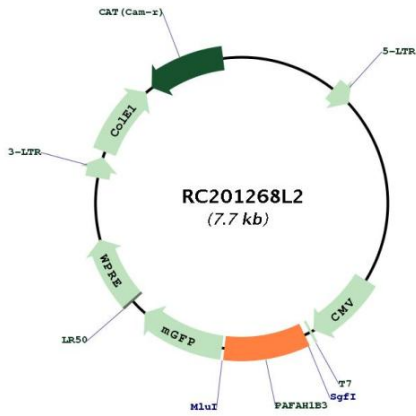
ACCN:	NM_002573
ORF Size:	693 bp



[View online »](#)

OTI Disclaimer:	The molecular sequence of this clone aligns with the gene accession number as a point of reference only. However, individual transcript sequences of the same gene can differ through naturally occurring variations (e.g. polymorphisms), each with its own valid existence. This clone is substantially in agreement with the reference, but a complete review of all prevailing variants is recommended prior to use. More info
OTI Annotation:	This clone was engineered to express the complete ORF with an expression tag. Expression varies depending on the nature of the gene.
Components:	The ORF clone is ion-exchange column purified and shipped in a 2D barcoded Matrix tube containing 10ug of transfection-ready, dried plasmid DNA (reconstitute with 100 ul of water).
Reconstitution Method:	<ol style="list-style-type: none">1. Centrifuge at 5,000xg for 5min.2. Carefully open the tube and add 100ul of sterile water to dissolve the DNA.3. Close the tube and incubate for 10 minutes at room temperature.4. Briefly vortex the tube and then do a quick spin (less than 5000xg) to concentrate the liquid at the bottom.5. Store the suspended plasmid at -20°C. The DNA is stable for at least one year from date of shipping when stored at -20°C.
RefSeq:	NM_002573.2
RefSeq Size:	1086 bp
RefSeq ORF:	696 bp
Locus ID:	5050
UniProt ID:	Q15102
Cytogenetics:	19q13.2
Protein Families:	Druggable Genome
Protein Pathways:	Ether lipid metabolism, Metabolic pathways
MW:	25.7 kDa
Gene Summary:	This gene encodes an acetylhydrolase that catalyzes the removal of an acetyl group from the glycerol backbone of platelet-activating factor. The encoded enzyme is a subunit of the platelet-activating factor acetylhydrolase isoform 1B complex, which consists of the catalytic beta and gamma subunits and the regulatory alpha subunit. This complex functions in brain development. A translocation between this gene on chromosome 19 and the CDC-like kinase 2 gene on chromosome 1 has been observed, and was associated with cognitive disability, ataxia, and atrophy of the brain. Alternatively spliced transcript variants have been described. [provided by RefSeq, Mar 2009]

Product images:



Circular map for RC201268L2