

## Product datasheet for **RC201265**

### IFT81 (NM\_031473) Human Tagged ORF Clone

#### Product data:

Product Type:	Expression Plasmids
Product Name:	IFT81 (NM_031473) Human Tagged ORF Clone
Tag:	Myc-DDK
Symbol:	IFT81
Synonyms:	CDV-1; CDV-1R; CDV1; CDV1R; DV1; SRTD19
Mammalian Cell Selection:	Neomycin
Vector:	pCMV6-Entry (PS100001)
E. coli Selection:	Kanamycin (25 ug/mL)



[View online »](#)

**ORF Nucleotide Sequence:**

>RC201265 ORF sequence  
 Red=Cloning site Blue=ORF Green=Tags(s)

TTTTGTAATACGACTCACTATAGGGCGGCCGGGAATTCGTCGACTGGATCCGGTACCGAGGAGATCTGCC  
 GCC**CGCATCGCC**

ATGAGTGATCAAATTAATTCATTATGGACAGTCTCAATAAGGAGCCCTTAGGAAGAACTATAATTTAA  
 TCACGTTTGATTCTTGGAGCCAATGCAACTATTACAAGTTCTCAGTGATTCTTGCTGAGATTGACCC  
 AAAGCAACTTGTGGATATCAGAGAGGAGATGCCAGAGCAGACAGCCAAACGAATGTTGAGCCTTCTTGGT  
 ATTCTTAAGTACAAACCTTCAGGAAATGCCACAGATATGAGTACTTTTCGTGAGGTTTGGTGATTGGAA  
 GTAACCTGTAATTTACCCAGTGTCCACTGGCTTCTTCAGAGGACTAATGAACTGAAGAAAAGAGCATA  
 TTTAGCTCGTTTTTAAATAAACTTGGGTACCAAGTGAAGTTTCTTCAGGATGAACTGTGGCTGACACC  
 AATAAACAGTATGAAGAGTTAATGGAAGCCTTTAAACTTTGCATAAAGAATATGAGCAGCTCAAGATAT  
 CTGGATTTTCTACAGCAGAAATAAGAAAGGATATCAGTGAATGGAAGAAGAAAAGGATCAGCTCATTAA  
 GAGAGTTGAACATTTGAAGAAAAGGTTGAGACAGCTCAGAATCATCAATGGATGCTTAAAAAGCAAGG  
 CAACTTCGAGTTGAAAAAGAGAGAGAAGAATATCTTGCACAACAGAAACAGGAACAAAAGAAATCAGCTAT  
 TTCATGCAGTGCAAAGATTGCAAAGAGTACAAAACAGCTGAAAAGCATGCGCCAAGCTGCAGCAGATGC  
 AAAGCCTGAAAGTTAATGAAGAGGCTAGAGGAGGAGATAAAATTTAATTTATATATGGTAACTGAAAA  
 TTTCTAAAGAATTAGAAAAAAGAAAAAGGAATTACATTTTTTACAAAAAGTAGTTTCAGAGCCAGCTA  
 TGGGCCATTCTGATCTTCTTGAAGTGAATCTAAAATAAATGAAATAAACACAGAAATTAACCAAGTTGAT  
 TGAAGAAAATGATGAGAAATGAGCCATTGAAGGCAAACTCTCACTGTATAGGCAACAGGCATCTATC  
 ATTTCCCGTAAAAAGAAAGCCAAAGCTGAGGAACTTCAGGAGGCAAGGAGAAGTTAGCCAGCCTAGAGA  
 GAGAAGCATCAGTAAAGAGAAATCAGACCCGTAATTTGATGGTACTGAAGTTTTAAAGGGAGATGAGAG  
 ACAGGATCTCACTCTGTACCCAGGCTGGAGTGGGTGATCATGGCTTACTGCAGCCTGAAACTC  
 CTAGGCTCAAGTATCCTACCTCAGCCTCC

**ACGCGT**ACGCGGCCGCTCGAGCAGAAACTCATCTCAGAAGAGGATCTGGCAGCAAATGATATCCTGGATT  
 ACAAGGATGACGACGATAAGGTTTAA

**Protein Sequence:**

>RC201265 protein sequence  
 Red=Cloning site Green=Tags(s)

MSDQIKFIMDSL NKEPFRKNYNLITFDSLEPMQLLQVLSVLAEIDPKQLVDIREEMPEQTAKRMLSLLG  
 ILKYKPSGNATDMSTFRQLVIGSKPVIYPVLHWLLQRTNELKKRAYLARFLIKLEVPSEFLQDETVA  
 NKQYEELMEAFKTLHKEYEQLKISGFSTAEIRKDISAMEEEKDQLIKRV EHLKRVETAQNHQWMLKIAR  
 QLRVEKEREEYLAQQKQE QKNQLFHAVQRLQRVQNLKSMRQAAADAKPESLMKRLEEEIKFNL YMVTEK  
 FPKEL ENKKELHFLQKVSEPAMGHS D LLELESKINEINTEINQLIEKMMRNEPIEGKLSLYRQQASI  
 ISRKKEAKAEELQEAKELASLEREASVKNRNTREFDGT E VLKGD ERQDLT LSPRLECGGVIMAYCSLKL  
 LGSSDPPTSAS

**TR**TRPLEQKLISEEDLAANDILDYKDDDDKV

**Chromatograms:**

[https://cdn.origene.com/chromatograms/mk6573\\_b01.zip](https://cdn.origene.com/chromatograms/mk6573_b01.zip)

**Restriction Sites:**

Sgfl-Mlul

**Cloning Scheme:**


**ACCN:** NM\_031473

**ORF Size:** 1293 bp

**OTI Disclaimer:** The molecular sequence of this clone aligns with the gene accession number as a point of reference only. However, individual transcript sequences of the same gene can differ through naturally occurring variations (e.g. polymorphisms), each with its own valid existence. This clone is substantially in agreement with the reference, but a complete review of all prevailing variants is recommended prior to use. [More info](#)

**OTI Annotation:** This clone was engineered to express the complete ORF with an expression tag. Expression varies depending on the nature of the gene.

**Components:** The ORF clone is ion-exchange column purified and shipped in a 2D barcoded Matrix tube containing 10ug of transfection-ready, dried plasmid DNA (reconstitute with 100 ul of water).

- Reconstitution Method:**
1. Centrifuge at 5,000xg for 5min.
  2. Carefully open the tube and add 100ul of sterile water to dissolve the DNA.
  3. Close the tube and incubate for 10 minutes at room temperature.
  4. Briefly vortex the tube and then do a quick spin (less than 5000xg) to concentrate the liquid at the bottom.
  5. Store the suspended plasmid at -20°C. The DNA is stable for at least one year from date of shipping when stored at -20°C.

**RefSeq:** [NM\\_031473.4](#)

**RefSeq Size:** 2324 bp

**RefSeq ORF:** 1296 bp

**Locus ID:** 28981

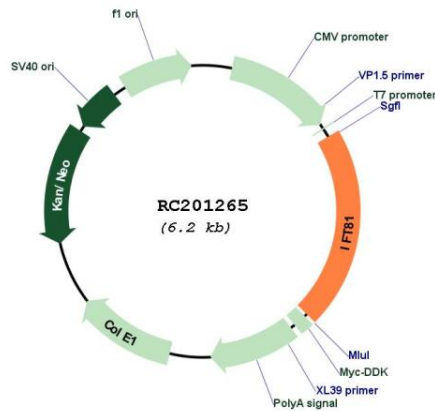
**UniProt ID:** [Q8WYAO](#)

**Cytogenetics:** 12q24.11

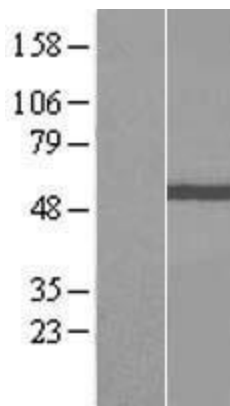
**MW:** 50.2 kDa

**Gene Summary:** The protein encoded by this gene, together with IFT74, forms a tubulin-binding module of intraflagellar transport complex B. This module is involved in transport of tubulin within the cilium, and the encoded protein is required for ciliogenesis. Mutations in this gene are a cause of short-rib polydactyly syndromes. [provided by RefSeq, Dec 2016]

**Product images:**



Circular map for RC201265



Western blot validation of overexpression lysate (Cat# [LY410479]) using anti-DDK antibody (Cat# [TA50011-100]). Left: Cell lysates from untransfected HEK293T cells; Right: Cell lysates from HEK293T cells transfected with RC201265 using transfection reagent MegaTran 2.0 (Cat# [TT210002]).