

Product datasheet for RC201263

Membralin (TMEM259) (NM_033420) Human Tagged ORF Clone

Product data:

Product Type:	Expression Plasmids
Product Name:	Membralin (TMEM259) (NM_033420) Human Tagged ORF Clone
Tag:	Myc-DDK
Symbol:	Membralin
Synonyms:	ASBABP1; C19orf6; MBRL; MEMBRALIN; R32184_3
Mammalian Cell Selection:	Neomycin
Vector:	pCMV6-Entry (PS100001)
E. coli Selection:	Kanamycin (25 ug/mL)
ORF Nucleotide Sequence:	>RC201263 ORF sequence Red=Cloning site Blue=ORF Green=Tags(s)

TTTTGTAATACGACTCACTATAGGGCGGCCGGAATTCGTCGACTGGATCCGGTACCGAGGAGATCTGCC
GCC**CGATCGCC**

ATGTCGGAGCACGTGGAGCCCGCAGCTCCGGGGCCCGGGCCCAACGGCGGCGGGCGGCCCGGCCCGG
CGCGGGGCTCGCACCCCAATCTCAACCCCAACCCCTCATCAACGTGCGGACCGGCTCTTCCACGC
GCTGTTCTCAAGATGGCTGTACCTATTCGGGCTCTTCCCGCCGCTTCCGCGTCTCTTCGAGTTC
TTCGTGCTGCTCAAGGCCCTGTTGTGCTTTCGTCTGGCTACATCCACATCGTCTTCTCCGCTCGC
CCATCAACTGCCTGGAGCACGTGCGTGACAAGTGCCGCTGAGGCATCCTGCGTGTGGAAGTGGCA
CAACTCGAGCCGCGCCGCTTCTTCTACAGTTCTGTGACAGCGGCGCCGCGGGAGCTTCCCGGGCCTG
GCCGTGGAACAGGCAGCAACCTGGACATGGAAGATGAGGAGGAGGAAGAGCTGACCATGGAGATGTTTG
GGAACAGCTCCATCAAGTTTGGCTGGACATCGAGCCCAAGGTGTTCAAGCCCGCAGTAGCACAGAGGC
CCTGAATGACAGCCAGGAGTTCCCTTCCCGAGACGCCACCAAGGTGGCCGAGGACGAGTACATC
GTGGAGTACTACTAGAGTATGGCTTCTTTCGCTGTGCGAGGCCACCGCCAGCGCTGAGCATCCCCG
TCATGGTGGTACCCTGGACCCACGCGGGACAGTGTTCGGGGACCGTTAGCCGCTGCTGCTGGA
TGAGTTCCTGGGTACGATGACATCCTCATGTCCAGCGTGAAGGGCTGGCCGAGAACGAGGAGAACAAG
GGCTTCTGCGGAATGTGGTGTGGGCGAGCACTACCGTTTGTGAGCATGTGATGGCCGGGACGTCCT
ACCTGGCCGCTTCGCCATCATGGTATCTTACGCTGAGCGTGTCCATGCTGCTGCGGTACTCACACCA
CCAGATCTTTGTCTTCATCGTGGACCTGCTGCAGATGCTGGAGATGAACATGGCCATCGCTTCCCGCA
GCGCCCTGCTGACCGTATCCTGGCCCTCGTCGGGATGGAGGCCATCATGTCGGAGTCTTCAACGACA
CCACCACCGCTTCTACATCATCCTCATCGTGTGGCTCGCGGACCAAGTATGACGCCATCTGCTGCCACAC
CAGCACCAGCAAGCGCATTGGCTGCGCATTCCA

ACGGTACGCGGCCGCTCGAGCAGAACTCATCTCAGAAGAGGATCTGGCAGCAATGATATCCTGGATT
ACAAGGATGACGACGATAAGGTTTAA



[View online »](#)

Protein Sequence: >RC201263 protein sequence
Red=Cloning site Green=Tags(s)

MSEHVEPAAPGPGPNGGGGPAPARGPRTPNLNPPLINVRDRLFHALFFKMAVTYSRLFPPAFRRLF
 FVLLKALFVLFVLAYIHIIVFSRSPINCLEHVRDKWPREGILRVEVRHNSSRAPVFLQFCDSGGRGSFPG
 AVEPGSNLDMEDDEEEELTMEMFGNSSIKFELDIEPKVFKPPSSSTEALNDSQEFPPETPTKVWPQDEYI
 VEYSLEYGFLRLSQATRQRLSIPVMVVTLDPTRDQCFGDRFSRLLLDEFLLGYDDILMSSVKGLAENEENK
 GFLRNVSGEHYRFVSMWMARTSYLAFAIMVIFTLVSMMLLRYSHHQIFVFIVDLLQMLEMMAIAFPA
 APLLTVILALVGMEAIMSEFFNDTTTAFYIILIVWLADQDAICCHTSTSKRHWLRIP

TRTRPLEQKLISEEDLAANDILDYKDDDDKV

Chromatograms: https://cdn.origene.com/chromatograms/mk6409_b03.zip

Restriction Sites: SgfI-MluI

Cloning Scheme:



* The last codon before the Stop codon of the ORF

ACCN: NM_033420

ORF Size: 1224 bp

OTI Disclaimer: The molecular sequence of this clone aligns with the gene accession number as a point of reference only. However, individual transcript sequences of the same gene can differ through naturally occurring variations (e.g. polymorphisms), each with its own valid existence. This clone is substantially in agreement with the reference, but a complete review of all prevailing variants is recommended prior to use. [More info](#)

OTI Annotation: This clone was engineered to express the complete ORF with an expression tag. Expression varies depending on the nature of the gene.

Components: The ORF clone is ion-exchange column purified and shipped in a 2D barcoded Matrix tube containing 10ug of transfection-ready, dried plasmid DNA (reconstitute with 100 ul of water).

Reconstitution Method:

1. Centrifuge at 5,000xg for 5min.
2. Carefully open the tube and add 100ul of sterile water to dissolve the DNA.
3. Close the tube and incubate for 10 minutes at room temperature.
4. Briefly vortex the tube and then do a quick spin (less than 5000xg) to concentrate the liquid at the bottom.
5. Store the suspended plasmid at -20°C. The DNA is stable for at least one year from date of shipping when stored at -20°C.

RefSeq: [NM_033420.2](#), [NP_219488.1](#)

RefSeq Size: 2654 bp

RefSeq ORF: 1227 bp

Locus ID: 91304

UniProt ID: [Q4ZIN3](#)

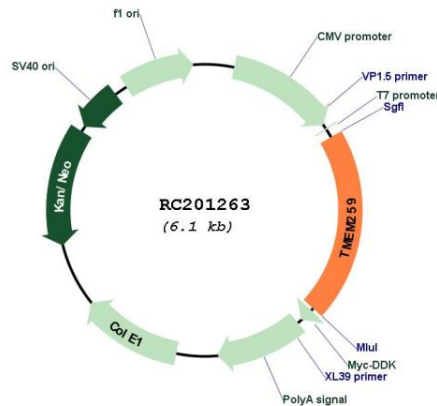
Cytogenetics: 19p13.3

Protein Families: Transmembrane

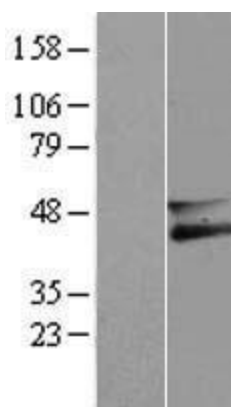
MW: 46.4 kDa

Gene Summary: May have a role in the ERAD pathway required for clearance of misfolded proteins in the endoplasmic reticulum (ER). Promotes survival of motor neurons, probably by protecting against ER stress.[UniProtKB/Swiss-Prot Function]

Product images:



Circular map for RC201263



Western blot validation of overexpression lysate (Cat# [LY409545]) using anti-DDK antibody (Cat# [TA50011-100]). Left: Cell lysates from untransfected HEK293T cells; Right: Cell lysates from HEK293T cells transfected with RC201263 using transfection reagent MegaTran 2.0 (Cat# [TT210002]).