

## Product datasheet for RC201258

### UQCRH (NM\_006004) Human Tagged ORF Clone

#### Product data:

**Product Type:** Expression Plasmids  
**Product Name:** UQCRH (NM\_006004) Human Tagged ORF Clone  
**Tag:** Myc-DDK  
**Symbol:** UQCRH  
**Synonyms:** QCR6; UQCR8  
**Mammalian Cell Selection:** Neomycin  
**Vector:** pCMV6-Entry (PS100001)  
**E. coli Selection:** Kanamycin (25 ug/mL)  
**ORF Nucleotide Sequence:** >RC201258 ORF sequence  
Red=Cloning site Blue=ORF Green=Tags(s)

TTTTGTAATACGACTCACTATAGGGCGGCCGGAATTCGTCGACTGGATCCGGTACCGAGGAGATCTGCC  
GCC**CGATCGCC**

ATGGGACTGGAGGACGAGCAAAAGATGCTTACCGAATCCGGAGATCCTGAGGAGGAGGAAGAGGAAGAGG  
AGGAATTAGTGGATCCCCTAACAAACAGTGAGAGAGCAATGCGAGCAGTTGGAGAAATGTGTAAAGGCCCG  
GGAGCGGCTAGAGCTCTGTGATGAGCGTGTATCCTCTCGATCACATACAGAAGAGGATTGCACGGAGGAG  
CTCTTTGACTTCTTGCATGCGAGGGACCATTGCGTGGCCACAACTCTTAACTTTGAAA

**ACGCGT**ACGCGGCCGCTCGAGCAGAAACTCATCTCAGAAGAGGATCTGGCAGCAAATGATATCCTGGATT  
ACAAGGATGACGACGATAAGGTTTAA

**Protein Sequence:** >RC201258 protein sequence  
Red=Cloning site Green=Tags(s)  
MGLEDEQKMLTESGDPEEEEEEEELVDPLTTVREQEQLKCVKARERLELCDERVSSRSHTEDCTEE  
LFDLHARDHCVAHKLFNNLK

**TRTRPLEQKLISEEDLAANDILDYKDDDDKV**

**Chromatograms:** [https://cdn.origene.com/chromatograms/mk6395\\_g01.zip](https://cdn.origene.com/chromatograms/mk6395_g01.zip)

**Restriction Sites:** Sgfl-MluI



[View online »](#)

**Cloning Scheme:**


**ACCN:** NM\_006004

**ORF Size:** 273 bp

**OTI Disclaimer:** The molecular sequence of this clone aligns with the gene accession number as a point of reference only. However, individual transcript sequences of the same gene can differ through naturally occurring variations (e.g. polymorphisms), each with its own valid existence. This clone is substantially in agreement with the reference, but a complete review of all prevailing variants is recommended prior to use. [More info](#)

**OTI Annotation:** This clone was engineered to express the complete ORF with an expression tag. Expression varies depending on the nature of the gene.

**Components:** The ORF clone is ion-exchange column purified and shipped in a 2D barcoded Matrix tube containing 10ug of transfection-ready, dried plasmid DNA (reconstitute with 100 ul of water).

- Reconstitution Method:**
1. Centrifuge at 5,000xg for 5min.
  2. Carefully open the tube and add 100ul of sterile water to dissolve the DNA.
  3. Close the tube and incubate for 10 minutes at room temperature.
  4. Briefly vortex the tube and then do a quick spin (less than 5000xg) to concentrate the liquid at the bottom.
  5. Store the suspended plasmid at -20°C. The DNA is stable for at least one year from date of shipping when stored at -20°C.

**RefSeq:** [NM\\_006004.4](#)

**RefSeq Size:** 623 bp

**RefSeq ORF:** 276 bp

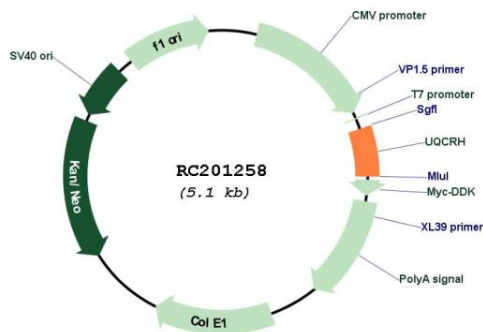
**Locus ID:** 7388

**UniProt ID:** [P07919](#)  
**Cytogenetics:** 1p33  
**Domains:** UCR\_hinge  
**Protein Families:** Druggable Genome  
**Protein Pathways:** Alzheimer's disease, Cardiac muscle contraction, Huntington's disease, Metabolic pathways, Oxidative phosphorylation, Parkinson's disease

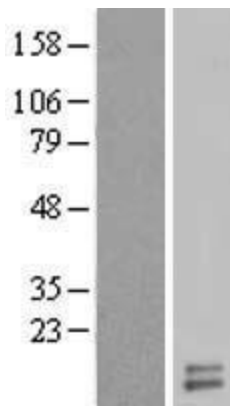
**MW:** 10.7 kDa

**Gene Summary:** This is a component of the ubiquinol-cytochrome c reductase complex (complex III or cytochrome b-c1 complex), which is part of the mitochondrial respiratory chain. This protein may mediate formation of the complex between cytochromes c and c1.[UniProtKB/Swiss-Prot Function]

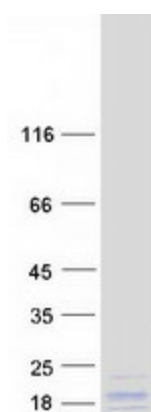
**Product images:**



Circular map for RC201258



Western blot validation of overexpression lysate (Cat# [LY416928]) using anti-DDK antibody (Cat# [TA50011-100]). Left: Cell lysates from untransfected HEK293T cells; Right: Cell lysates from HEK293T cells transfected with RC201258 using transfection reagent MegaTran 2.0 (Cat# [TT210002]).



Coomassie blue staining of purified UQCRH protein (Cat# [TP301258]). The protein was produced from HEK293T cells transfected with UQCRH cDNA clone (Cat# RC201258) using MegaTran 2.0 (Cat# [TT210002]).