

Product datasheet for RC201255

SNRPD3 (NM_004175) Human Tagged ORF Clone

Product data:

Product Type: Expression Plasmids
Product Name: SNRPD3 (NM_004175) Human Tagged ORF Clone
Tag: Myc-DDK
Symbol: SNRPD3
Synonyms: Sm-D3; SMD3
Mammalian Cell Selection: Neomycin
Vector: pCMV6-Entry (PS100001)
E. coli Selection: Kanamycin (25 ug/mL)
ORF Nucleotide Sequence: >RC201255 representing NM_004175
Red=Cloning site Blue=ORF Green=Tags(s)

TTTTGTAATACGACTCACTATAGGGCGCCGGAATTCGTCGACTGGATCCGGTACCGAGGAGATCTGCC
GCC**CGATCGCC**

ATGTCTATTGGTGTGCCGATTAAGTACTGCATGAGGCCGAGGGCCACATTGTGACATGTGAGACGAACA
CCGGTGAGGTATATCGGGGAAGCTCATTGAAGCAGAGGACAACATGAACTGCCAGATGTCCAACATCAC
AGTCACATACAGAGATGGCCGAGTGGCACAGCTGGAGCAGGTATACATCCGTGGCAGCAAATCCGCTTT
CTGATTTTGCCTGACATGCTGAAGAACGCACCCATGTTAAAGAGCATGAAAAATAAAAACCAAGGCTCAG
GGCTGGCCGAGGAAAAGCTGCTATTCTCAAGGCCAAGTGGCCGAAGAGGAAGAGGACGTGGAATGGG
ACGTGAAACATCTTTCAAAGCGAAGA

ACGCGTACGCGGCCGCTCGAGCAGAACTCATCTCAGAAGAGGATCTGGCAGCAAATGATATCCTGGATT
ACAAGGATGACGACGATAAGGTTTAA

Protein Sequence: >RC201255 representing NM_004175
Red=Cloning site Green=Tags(s)
MSIGVPIKVLHEAEGHIVTCETNTGEVYRGKLEAEDNMNCQMSNITVTYRDGRVAQLEQVYIRGSKIRF
LILPDLKNAFMLKSMKNKQSGSAGRGKAAILKAQVAARGRGRGMGRGNIFQKRR

TRTRPLEQKLISEEDLAANDILDYKDDDDKV

Chromatograms: https://cdn.origene.com/chromatograms/mk8112_c01.zip

Restriction Sites: SgfI-MluI



[View online »](#)

Cloning Scheme:


ACCN: NM_004175

ORF Size: 378 bp

OTI Disclaimer: The molecular sequence of this clone aligns with the gene accession number as a point of reference only. However, individual transcript sequences of the same gene can differ through naturally occurring variations (e.g. polymorphisms), each with its own valid existence. This clone is substantially in agreement with the reference, but a complete review of all prevailing variants is recommended prior to use. [More info](#)

OTI Annotation: This clone was engineered to express the complete ORF with an expression tag. Expression varies depending on the nature of the gene.

Components: The ORF clone is ion-exchange column purified and shipped in a 2D barcoded Matrix tube containing 10ug of transfection-ready, dried plasmid DNA (reconstitute with 100 ul of water).

- Reconstitution Method:**
1. Centrifuge at 5,000xg for 5min.
 2. Carefully open the tube and add 100ul of sterile water to dissolve the DNA.
 3. Close the tube and incubate for 10 minutes at room temperature.
 4. Briefly vortex the tube and then do a quick spin (less than 5000xg) to concentrate the liquid at the bottom.
 5. Store the suspended plasmid at -20°C. The DNA is stable for at least one year from date of shipping when stored at -20°C.

RefSeq: [NM_004175.5](#)

RefSeq Size: 1385 bp

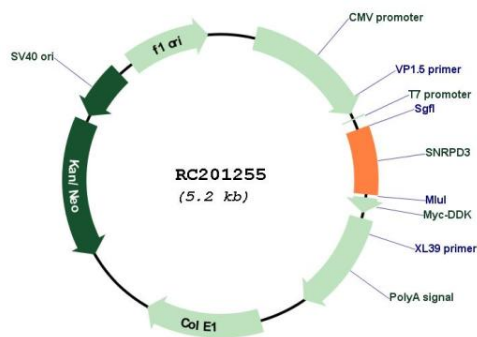
RefSeq ORF: 381 bp

Locus ID: 6634

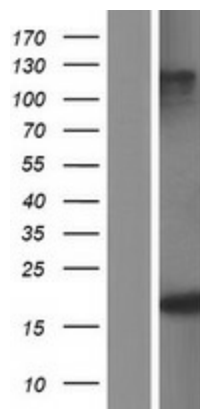
UniProt ID: [P62318](#)

Cytogenetics:	22q11.23
Domains:	Sm
Protein Families:	Druggable Genome
Protein Pathways:	Spliceosome, Systemic lupus erythematosus
MW:	13.7 kDa
Gene Summary:	This gene encodes a core component of the spliceosome, which is a nuclear ribonucleoprotein complex that functions in pre-mRNA splicing. Alternative splicing results in multiple transcript variants. [provided by RefSeq, Jul 2013]

Product images:



Circular map for RC201255



Western blot validation of overexpression lysate (Cat# [LY418164]) using anti-DDK antibody (Cat# [TA50011-100]). Left: Cell lysates from untransfected HEK293T cells; Right: Cell lysates from HEK293T cells transfected with RC201255 using transfection reagent MegaTran 2.0 (Cat# [TT210002]).