

Product datasheet for RC201254

p23 (PTGES3) (NM_006601) Human Tagged ORF Clone

Product data:

Product Type: Expression Plasmids
Product Name: p23 (PTGES3) (NM_006601) Human Tagged ORF Clone
Tag: Myc-DDK
Symbol: p23
Synonyms: cPGES; P23; TEBP
Mammalian Cell Selection: Neomycin
Vector: pCMV6-Entry (PS100001)
E. coli Selection: Kanamycin (25 ug/mL)
ORF Nucleotide Sequence: >RC201254 ORF sequence
 Red=Cloning site Blue=ORF Green=Tags(s)

TTTTGTAATACGACTCACTATAGGGCGGCCGGAATTCGTCGACTGGATCCGGTACCGAGGAGATCTGCC
 GCCCGGATCGCC

ATGCAGCCTGCTTCTGCAAAGTGGTACGATCGAAGGGACTATGTCTTCATTGAATTTGTGTTGAAGACA
 GTAAGGATGTTAATGTAATTTTAAAAATCCAACTTACATTCAAGTGTCTCGGAGGAAGTGATAATTT
 TAAGCATTTAAATGAAATTGATCTTTTCACTGTATTGATCCAAATGATTCCAAGCATAAAAAGAACGGAC
 AGATCAATTTTATGTTGTTTACGAAAAGGAGAATCTGGCCAGTCATGGCCAAGGTTAACAAAAGAAAGGG
 CAAAGCTTAATTGGCTTAGTGTGCGACTCAATAATTGAAAGACTGGGAAGATGATTCAGATGAAGACAT
 GTCTAATTTTATCGTTTCTCTGAGATGATGAACAACATGGGTGGTATGAGGATGTAGATTTACCAGAA
 GTAGATGGAGCAGATGATGATTCACAAGACAGTATGATGAAAAAATGCCAGATCTGGAG

ACGCGTACGCGGCCGCTCGAGCAGAACTCATCTCAGAAGAGGATCTGGCAGCAAATGATATCCTGGATT
 ACAAGGATGACGACGATAAGGTTTAA

Protein Sequence: >RC201254 protein sequence
 Red=Cloning site Green=Tags(s)

MQPASAKWYDRRDYVFIIEFCVEDSKDVNVNFEKSKLTFSLGGSDNFKHLNEIDL FHCIDPNDSKHKRTD
 RSILCCLRKGESGQSWPRLTKERAKLNWLSVDFNNWKDWEDDSDEMSNFD RFSSEMMNMGGDEDVDLPE
 VDGADDSQSDDEKMPDLE

TRTRPLEQKLI SEEDLAANDILDYKDDDDKV

Chromatograms: https://cdn.origene.com/chromatograms/mk6143_c12.zip



[View online »](#)

Restriction Sites: SgfI-MluI

Cloning Scheme:



ACCN: NM_006601

ORF Size: 480 bp

OTI Disclaimer: The molecular sequence of this clone aligns with the gene accession number as a point of reference only. However, individual transcript sequences of the same gene can differ through naturally occurring variations (e.g. polymorphisms), each with its own valid existence. This clone is substantially in agreement with the reference, but a complete review of all prevailing variants is recommended prior to use. [More info](#)

OTI Annotation: This clone was engineered to express the complete ORF with an expression tag. Expression varies depending on the nature of the gene.

Components: The ORF clone is ion-exchange column purified and shipped in a 2D barcoded Matrix tube containing 10ug of transfection-ready, dried plasmid DNA (reconstitute with 100 ul of water).

Reconstitution Method:

1. Centrifuge at 5,000xg for 5min.
2. Carefully open the tube and add 100ul of sterile water to dissolve the DNA.
3. Close the tube and incubate for 10 minutes at room temperature.
4. Briefly vortex the tube and then do a quick spin (less than 5000xg) to concentrate the liquid at the bottom.
5. Store the suspended plasmid at -20°C. The DNA is stable for at least one year from date of shipping when stored at -20°C.

Note: Plasmids are not sterile. For experiments where strict sterility is required, filtration with 0.22um filter is required.

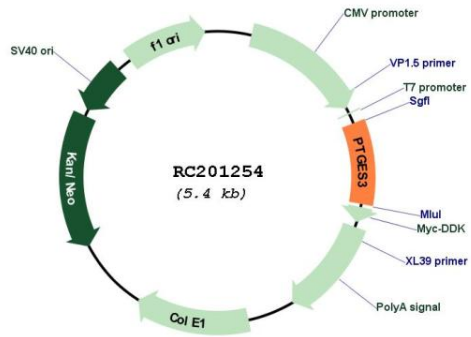
RefSeq: [NM_006601.7](#)

RefSeq Size: 2045 bp

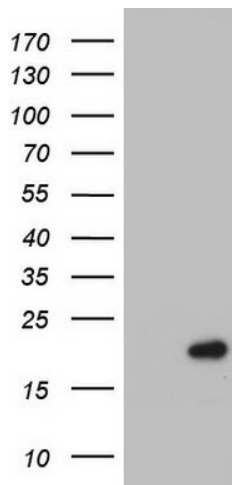
RefSeq ORF: 483 bp

Locus ID: 10728
UniProt ID: [Q15185](#)
Cytogenetics: 12
Protein Families: Druggable Genome, Nuclear Hormone Receptor
MW: 18.7 kDa
Gene Summary: This gene encodes an enzyme that converts prostaglandin endoperoxide H2 (PGH2) to prostaglandin E2 (PGE2). This protein functions as a co-chaperone with heat shock protein 90 (HSP90), localizing to response elements in DNA and disrupting transcriptional activation complexes. Alternative splicing results in multiple transcript variants. There are multiple pseudogenes of this gene on several different chromosomes. [provided by RefSeq, Feb 2016]

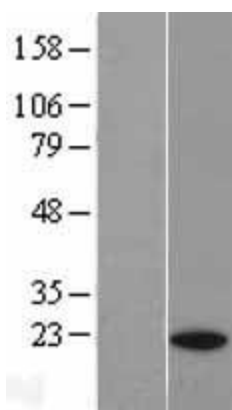
Product images:



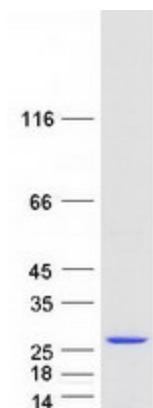
Circular map for RC201254



HEK293T cells were transfected with the pCMV6-ENTRY control (Cat# [PS100001], Left lane) or pCMV6-ENTRY PTGES3 (Cat# RC201254, Right lane) cDNA for 48 hrs and lysed. Equivalent amounts of cell lysates (5 ug per lane) were separated by SDS-PAGE and immunoblotted with anti-PTGES3 (Cat# [TA803433]). Positive lysates [LY401975] (100ug) and [LC401975] (20ug) can be purchased separately from OriGene.



Western blot validation of overexpression lysate (Cat# [LY401975]) using anti-DDK antibody (Cat# [TA50011-100]). Left: Cell lysates from untransfected HEK293T cells; Right: Cell lysates from HEK293T cells transfected with RC201254 using transfection reagent MegaTran 2.0 (Cat# [TT210002]).



Coomassie blue staining of purified PTGES3 protein (Cat# [TP301254]). The protein was produced from HEK293T cells transfected with PTGES3 cDNA clone (Cat# RC201254) using MegaTran 2.0 (Cat# [TT210002]).