

## Product datasheet for **RC201246**

### RED (IK) (NM\_006083) Human Tagged ORF Clone

#### Product data:

Product Type:	Expression Plasmids
Product Name:	RED (IK) (NM_006083) Human Tagged ORF Clone
Tag:	Myc-DDK
Symbol:	RED
Synonyms:	CSA2; RED; RER
Mammalian Cell Selection:	Neomycin
Vector:	pCMV6-Entry (PS100001)
E. coli Selection:	Kanamycin (25 ug/mL)



[View online »](#)

**ORF Nucleotide Sequence:**

>RC201246 ORF sequence  
 Red=Cloning site Blue=ORF Green=Tags(s)

TTTTGTAATACGACTCACTATAGGGCGGCCGGAATTCGTCGACTGGATCCGGTACCGAGGAGATCTGCC  
 GCC**CGGATCGCC**

ATGCCGGAGCGAGATAGTGAGCCGTTCTCCAACCTTTGGCCCCGATGGCCACGATGTGGATGATCCTC  
 ACTCCTTCCACCAATCAAACCTACCAATGAAGACTTCAGGAACTTCTCATGACCCCCAGGGCTGCACC  
 TACCTCTGCACCACCTTCTAAGTCACGTACCATGAGATGCCAAGGGAGTACAATGAGGATGAAGACCCA  
 GCTGCACGAAGGAGGAAAAAGAAAGTTATTATGCCAAGCTACGCCAACAAAGAAATTGAGAGAGAGAGAG  
 AGCTAGCAGAGAAGTACCGGATCGTGCCAAGGAACGGAGAGATGGAGTGAACAAAGATTATGAAGAAAC  
 CGAGCTTATCAGCACCACAGCTAACTATAGGGCTGTTGGCCCCACTGCTGAGGCGGACAAATCAGCTGCA  
 GAGAAGAGAAGACAGTTGATCCAGGAGTCCAAATTCCTGGGTGGTACATGGAACACACCCATTTGGTGA  
 AAGGCTTGGATTTGCTCTGCTTCAAAGGTACGAGCTGAGATTGCCAGCAAAGAGAAAGAGGAAGAGGA  
 ACTGATGAAAAGCCCCAGAAAGAAACCAAGAAAGATGAGGATCTGAAAATAAAATTGAATTTAAAACA  
 CGTCTGGGCCGCAATGTTTACCGAATGCTTTTTAAGAGCAAAGCATATGAGCGGAATGAGTTGTTCTCTGC  
 CGGGCCGATGACCTATGTGGTAGACCTGGATGATGAGTATGCTGACACAGATATCCCCACCACTTTAT  
 CCGCAGCAAGGCTGATTGCCCCACCATGGAGGCCAGACCACACTGACCACAAATGACATTGTCTATTAGC  
 AAGCTGACCCAGATCCTTTCATACCTGAGGCAGGGAACCCGTAACAAGAAGCTTAAGAAGAAGGATAAAG  
 GGAAGCTGGAAGAGAAGAAACCTCTGAGGCTGACATGAATATTTTTGAAGACATTGGGGATTACGTACC  
 CTCCACAACCAAGACACCTCGGGACAAGGAGCGGGAGAGATATCGGGAACGGGAGCGTGATCGGGAAAGA  
 GACAGAGACCGTGACCGAGAGCGAGAGCGAGAACGAGATCGGGAACGAGAGCGGAGCGGGACCGGAGAGA  
 GAGAAGAGGAAAAAGAGACACAGCTACTTTGAGAAGCCAAAAGTAGATGATGAGCCATGGACGTTGA  
 CAAAGGACCTGGGTCTACCAAGGAGTTGATCAAGTCCATCAATGAAAAGTTTGGTGGCTGCTGGCTGG  
 GAAGGCACAGAATCGCTGAAGAAGCCAGAAGACAAAAAGCAGCTGGGAGATTTCTTTGGCATGTCCAACA  
 GTTATGCAGAGTGCTACCCAGCCACGATGGATGACATGGCTGTGGATAGTATGAGGAGGTGGATTATAG  
 CAAAATGGACCAGGGTAACAAGAAGGGGCCCTTAGGCCGTTGGGACTTTGATACCCAGGAAGAATACAGC  
 GAGTATATGAACAACAAAGAAGCTTTGCCCAAGGCTGCATTCCAGTATGGTATCAAAATGTCTGAAGGGC  
 GAAAACCCAGGCGCTTCAAGGAAACCAATGACAAAGCAGAGCTTATCGCCAGTGAAGAAGATTAGTGC  
 AATCATTGAGAAGAGGAAGAAGTGAAGCTGATGGGTTGAAGTCAAAAGACCAAAATAC

**ACGCGT**ACGCGGCCGCTCGAGCAGAAACTCATCTCAGAAGAGGATCTGGCAGCAAATGATATCCTGGATT  
 ACAAGGATGACGACGATAAGGTTTAA

**Protein Sequence:**

>RC201246 protein sequence  
 Red=Cloning site Green=Tags(s)

MPERDSEPF SNPLAPDGHVDDPHSFHQSKLTNEDFRKLLMTPRAAPTSAPPSKSRHHEMPREYNEDEP  
 AARRRKKKSYAKLRQQEIERERELAERYRDRAKERRDGVNKDYEEETELISTTANYRAVGPTAEADKSA  
 EKRRQLIQESKFLGGDMEHHLVKGLDFALLQKVRAEIASKEKEEEEELMEKPQKETKKDEDPENKIEFKT  
 RLGRNVYRMLFKSKAYERNELFLPGRMTYVVDLDEYADTDIPTTLIRSKADCPTMEAQTTLTTNDIVIS  
 KLTQILSYLRQGRNKKLKKDKGKLEEKPPPEADMNIFEDIGDYVPSTTKTPRDKERERYRERDRER  
 DRDRDREREREREREREREREEREEKRRHSYFEKPKVDDEPMDVDKPGSTKELIKSINEKFAGSAGW  
 EGTESLKKPEDKKQLGDFFGMSNSYAECYPATMDDMAVDSDEEVDYSKMDQGNKKGPLGRWDFDTQEEYS  
 EYMNNKEALPKAAFQYGIKMSGRKTRRFKETNDKAELDRQWKKISAIIEKRKKMEADGVEVKRPKY

**TR**TRPLEQKLI SEEDLAANDILDYKDDDDKV

**Restriction Sites:**

Sgfl-MluI

**Cloning Scheme:**


**ACCN:** NM\_006083

**ORF Size:** 1671 bp

**OTI Disclaimer:** Due to the inherent nature of this plasmid, standard methods to replicate additional amounts of DNA in E. coli are highly likely to result in mutations and/or rearrangements. Therefore, OriGene does not guarantee the capability to replicate this plasmid DNA. Additional amounts of DNA can be purchased from OriGene with batch-specific, full-sequence verification at a reduced cost. Please contact our customer care team at [custsupport@origene.com](mailto:custsupport@origene.com) or by calling 301.340.3188 option 3 for pricing and delivery.

The molecular sequence of this clone aligns with the gene accession number as a point of reference only. However, individual transcript sequences of the same gene can differ through naturally occurring variations (e.g. polymorphisms), each with its own valid existence. This clone is substantially in agreement with the reference, but a complete review of all prevailing variants is recommended prior to use. [More info](#)

**OTI Annotation:** This clone was engineered to express the complete ORF with an expression tag. Expression varies depending on the nature of the gene.

**Components:** The ORF clone is ion-exchange column purified and shipped in a 2D barcoded Matrix tube containing 10ug of transfection-ready, dried plasmid DNA (reconstitute with 100 ul of water).

- Reconstitution Method:**
1. Centrifuge at 5,000xg for 5min.
  2. Carefully open the tube and add 100ul of sterile water to dissolve the DNA.
  3. Close the tube and incubate for 10 minutes at room temperature.
  4. Briefly vortex the tube and then do a quick spin (less than 5000xg) to concentrate the liquid at the bottom.
  5. Store the suspended plasmid at -20°C. The DNA is stable for at least one year from date of shipping when stored at -20°C.

RefSeq: [NM\\_006083.4](#)

RefSeq Size: 1955 bp

RefSeq ORF: 1674 bp

Locus ID: 3550

UniProt ID: [Q13123](#)

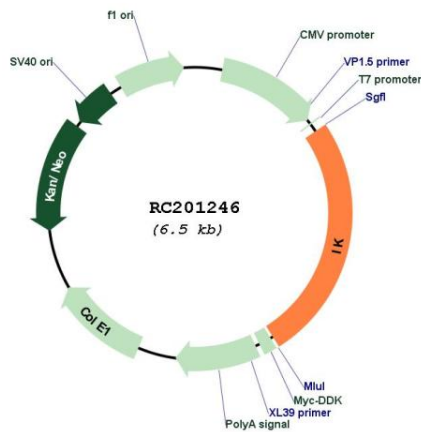
Cytogenetics: 5q31.3

Protein Families: Druggable Genome

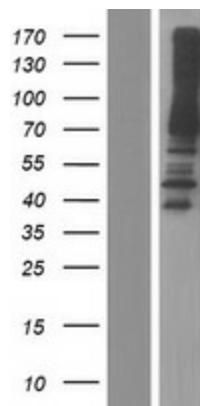
MW: 65.6 kDa

**Gene Summary:** The protein encoded by this gene was identified by its RED repeat, a stretch of repeated arginine, glutamic acid and aspartic acid residues. The protein localizes to discrete dots within the nucleus, excluding the nucleolus. Its function is unknown. This gene maps to chromosome 5; however, a pseudogene may exist on chromosome 2. [provided by RefSeq, Jul 2008]

### Product images:



Circular map for RC201246



Western blot validation of overexpression lysate (Cat# [LY416873]) using anti-DDK antibody (Cat# [TA50011-100]). Left: Cell lysates from untransfected HEK293T cells; Right: Cell lysates from HEK293T cells transfected with RC201246 using transfection reagent MegaTran 2.0 (Cat# [TT210002]).