

Product datasheet for **RC201243**

CLN3 (NM_000086) Human Tagged ORF Clone

Product data:

| | |
|---------------------------|---|
| Product Type: | Expression Plasmids |
| Product Name: | CLN3 (NM_000086) Human Tagged ORF Clone |
| Tag: | Myc-DDK |
| Symbol: | CLN3 |
| Synonyms: | BTN1; BTS; JNCL |
| Mammalian Cell Selection: | Neomycin |
| Vector: | pCMV6-Entry (PS100001) |
| E. coli Selection: | Kanamycin (25 ug/mL) |



[View online »](#)

ORF Nucleotide Sequence:

>RC201243 ORF sequence
 Red=Cloning site Blue=ORF Green=Tags(s)

TTTTGTAATACGACTCACTATAGGGCGGCCGGGAATTCGTCGACTGGATCCGGTACCGAGGAGATCTGCC
 GCC**CGGATCGCC**

ATGGGAGGCTGTGCAGGCTCGCGCGCGCTTTTCGGATTCCGAGGGGAGGAGACCGTCCCGGAGCCCC
 GGCTCCCTCTGTTGGACCATCAGGGCGCGCATTGGAAGAACGCGGTGGGCTTCTGGCTGCTGGCCCTTG
 CAACAACCTCTCTTATGTGGTGTGCTGAGTGCGCCCCACGACATCCTTAGCCACAAGAGGACATCGGGA
 AACAGAGCCATGTGGACCCAGGCCAACGCGCATCCCCACAACAGCTCATCACGATTTGACTGCAACT
 CTGTCTCTACGGCTGCTGTGCTCCTGGCGGACATCCTCCACACTCGTCATCAAATTTGGTCTCTCT
 TGGCCTTACCTGCTGCCCTACAGCCCCGGGTTCTCGTCAGTGGGATTTGTGCTGCTGGAAGCTTCGTC
 CTGTTGCCTTTTCTATTCTGTGGGACCAGCCTGTGTGGTGTGGTCTTCGCTAGCATCTCATCAGGCC
 TTGGGGAGGTCACCTTCTCCTCACTGCCTTCTACCCAGGGCCGTGATCTCCTGGTGGTCTCAGG
 GACTGGGGAGCTGGGCTGCTGGGGCCCTGCTCCTACCTGGGCTCACCCAGGCCGGCCTCTCCCTCAG
 CAGACCCTGCTGCCATGCTGGGTATCCCTGCCCTGCTGCTGGCCAGCTATTTCTTGTGCTCACATCTC
 CTGAGGCCAGGACCCTGGAGGGGAAGAAGAAGCAGAGAGCGCAGCCCGGAGCCCTCATAAGAACCGA
 GGCCCCGGAGTCGAAGCCAGGCTCCAGCTCCAGCCTCTCCCTTCGGGAAAGGTGGACAGTGTCAAGGGT
 CTGCTGTGGTACATTGTTCCCTTGGTCGTAGTTTACTTTGCCGAGATTTTATTAAACAGGGACTTTTTG
 AACTCCTCTTTTTCTGGAACACTTCCCTGAGTCACGCTCAGCAATACCGTGGTACCAGATGCTGTACCA
 GGCTGGCGTCTTTCCTCCCGCTCTTCTCTCCGCTGCTGTGCATCCGTTTACCTGGGCCCTGGCCCTG
 CTGCAGTGCCTCAACTGGTGTCTCTGCTGGCAGACGTGTGGTTCGGCTTTCTGCCAAGCATCTACCTCG
 TCTTCTGATCATTCTGTATGAGGGGCTCCTGGGAGGCGCAGCCTACGTGAACACCTTCCACAACATCGC
 CCTGGAGACCAGTGTAGCACCAGGGAGTTTGAATGGCGGCCACCTGCATCTCTGACACACTGGGGATC
 TCCTGTGCGGGCTCCTGGCTTTCCTCTGCATGACTTCTCTGCCAGCTCTCC

ACGCGTACGCGGCCGCTCGAGCAGAACTCATCTCAGAAGAGGATCTGGCAGCAAATGATATCCTGGATT
 ACAAGGATGACGACGATAAGGTTTAA

Protein Sequence:

>RC201243 protein sequence
 Red=Cloning site Green=Tags(s)

MGGCAGSRRRFS DSEGEETVPEPRLPLLDHQGAHWKNAVGFLLGLCNNFSYVVML SAAHDILSHKRTSG
 NQSHVDPGPTPIPHNSSRFDCNSVSTAAVLLADILPTLVIKLLAPLGLHLLPYSRVLVSGICAAGSFV
 LVAFSHSVGTSLCGVVFASISSGLGEVTFLLSLTAFYPRAVISWSSGTGGAGLLGALS YLGLTQAGLSPQ
 QTLLSMLGIPALLLASYFLLLSPEAQDPGEEEAESAARQPLIRTEAPESKPGSSSSLRERWTVFKG
 LLWYIVPLVVVYFAEYFINQGLFELLFFWNTSLSHAQQYRWYQMLYQAGVFASRSSLRCCRIRFTWALAL
 LQCLNLVFLADVWFGFLPSIYLVFLIILYEGLLGGAAYVNTFHNIALETSDHEHREFAMAATCISDTLGI
 SLSGLLALPLHDFLCQLS

TRTRPLEQKLISEEDLAANDILDYKDDDDKV

Chromatograms:

https://cdn.origene.com/chromatograms/mk6128_d10.zip

Restriction Sites:

SgfI-MluI

Cloning Scheme:


ACCN: NM_000086

ORF Size: 1314 bp

OTI Disclaimer: The molecular sequence of this clone aligns with the gene accession number as a point of reference only. However, individual transcript sequences of the same gene can differ through naturally occurring variations (e.g. polymorphisms), each with its own valid existence. This clone is substantially in agreement with the reference, but a complete review of all prevailing variants is recommended prior to use. [More info](#)

OTI Annotation: This clone was engineered to express the complete ORF with an expression tag. Expression varies depending on the nature of the gene.

Components: The ORF clone is ion-exchange column purified and shipped in a 2D barcoded Matrix tube containing 10ug of transfection-ready, dried plasmid DNA (reconstitute with 100 ul of water).

Reconstitution Method:

1. Centrifuge at 5,000xg for 5min.
2. Carefully open the tube and add 100ul of sterile water to dissolve the DNA.
3. Close the tube and incubate for 10 minutes at room temperature.
4. Briefly vortex the tube and then do a quick spin (less than 5000xg) to concentrate the liquid at the bottom.
5. Store the suspended plasmid at -20°C. The DNA is stable for at least one year from date of shipping when stored at -20°C.

RefSeq: [NM_000086.2](#), [NP_000077.1](#)

RefSeq Size: 1879 bp

RefSeq ORF: 1317 bp

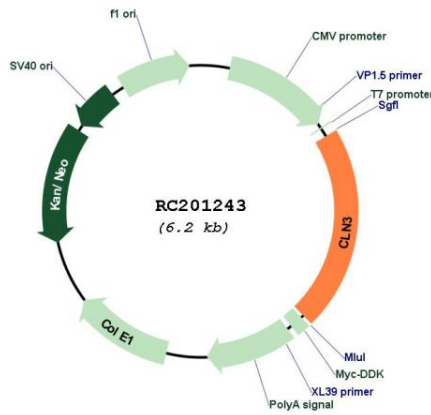
Locus ID: 1201

UniProt ID: [Q13286](#)

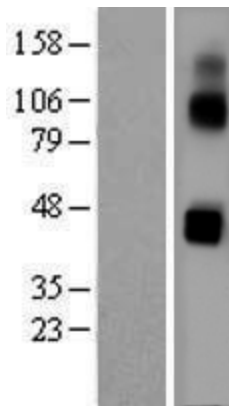
Cytogenetics: 16p12.1

| | |
|--------------------------|--|
| Domains: | CLN3 |
| Protein Families: | Druggable Genome, Transmembrane |
| Protein Pathways: | Lysosome |
| MW: | 47.6 kDa |
| Gene Summary: | This gene encodes a protein that is involved in lysosomal function. Mutations in this, as well as other neuronal ceroid-lipofuscinosis (CLN) genes, cause neurodegenerative diseases commonly known as Batten disease or collectively known as neuronal ceroid lipofuscinoses (NCLs). Many alternatively spliced transcript variants have been found for this gene. [provided by RefSeq, Jul 2008] |

Product images:



Circular map for RC201243



Western blot validation of overexpression lysate (Cat# [LY400027]) using anti-DDK antibody (Cat# [TA50011-100]). Left: Cell lysates from untransfected HEK293T cells; Right: Cell lysates from HEK293T cells transfected with RC201243 using transfection reagent MegaTran 2.0 (Cat# [TT210002]).