

Product datasheet for **RC201242**

CD20 (MS4A1) (NM_021950) Human Tagged ORF Clone

Product data:

Product Type:	Expression Plasmids
Product Name:	CD20 (MS4A1) (NM_021950) Human Tagged ORF Clone
Tag:	Myc-DDK
Symbol:	MS4A1
Synonyms:	B1; Bp35; CD20; CVID5; FMC7; LEU-16; MS4A2; S7
Vector:	pCMV6-Entry (PS100001)
E. coli Selection:	Kanamycin (25 ug/mL)
Cell Selection:	Neomycin
ORF Nucleotide Sequence:	>RC201242 ORF sequence Red=Cloning site Blue=ORF Green=Tags(s)

TTTTGTAATACGACTCACTATAGGGCGCCGGGAATTCGTCGACTGGATCCGGTACCGAGGAGATCTGCC
GCC**GCGATCGCC**

ATGACAACACCCAGAAATTCAGTAAATGGGACTTCCCGGCAGAGCCAATGAAAGGCCCTATTGCTATGC
AATCTGGTCCAAAACCACTCTTCAGGAGGATGTCTTCACTGGTGGGCCCCACGCAAAGCTTCTTCATGAG
GGAACTAAGACTTTGGGGGCTGTCCAGATTATGAATGGGCTTCCACATTGCCCTGGGGGTCTTCTG
ATGATCCCAGCAGGGATCTATGCACCCATCTGTGTGACTGTGTGGTACCCTCTCTGGGGAGGCATTATGT
ATATTATTTCCGGATCACTCCTGGCAGCAACGGAGAAAACTCCAGGAAGTGTGGTCAAAGGAAAAAT
GATAATGAATTCATTGAGCCTCTTTGCTGCCATTTCTGGAATGATTCTTTCAATCATGGACATACTTAAT
ATTAATAATTTCCATTTTTTAAAAATGGAGAGTCTGAATTTTATTAGAGCTCACACCATATATTAACA
TATACAACTGTGAACCAGCTAATCCCTCTGAGAAAACTCCCCATCTACCAATACTGTTACAGCATACA
ATCTCTGTTCTTGGGCATTTTGTGAGTGTCTGATCTTTGCCTTCTCCAGGAAGTGTAAATAGCTGGC
ATCGTTGAGAATGAATGAAAAAGAACGTCTCCAGACCCAAATCTAACATAGTTCTCCTGTCAGCAGAAG
AAAAAAGAAGCAGACTATTGAAATAAAGAAGAAGTGGTTGGGCTAACTGAAACATCTTCCCAACCAAA
GAATGAAGAAGACATTGAAATTATTCCAATCCAAGAAGAGGAAGAAGAAGAAACAGAGACGAACCTTCCA
GAACCTCCCAAGATCAGGAATCCTCACCAATAGAAAATGACAGCTCTCCT

ACGCGTACGCGGCCGCTCGAGCAGAAACTCATCTCAGAAGAGGATCTGGCAGCAAATGATATCCTGGATT
ACAAGGATGACGACGATAAGGTTTAA



[View online »](#)

Protein Sequence: >RC201242 protein sequence
Red=Cloning site Green=Tags(s)

MTTPRNSVNGTFPAEPMKGIAMQSGPKPLFRMSSLVGPTQSFMRKSLGAVQIMNGLFHIALGLL
MIPAGIYAPICVTWYPLWGGIMYIISGSLAATEKNRKLKVKGMIMNSLSLFAAISGMILSIMDILN
IKISHFLKMESLNFIRAHTPYINIYNCEPANPSEKNSPSTQYCYSIQSLFLGILSVMLIFAFFQELVIAG
IVENEWKRTCSPKSNIVLLSAEEKKEQTIEIKEEVVGLTETSSQPKNEEDIEIPIQEEEEETETNFP
EPPQDQESSPIENDSSP

TRTRPLEQKLISEEDLAANDILDYKDDDDKV

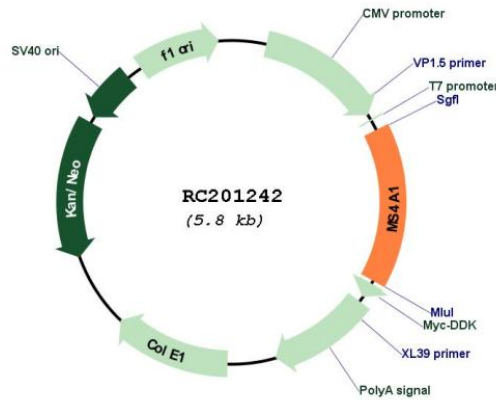
Chromatograms: https://cdn.origene.com/chromatograms/mk6143_c06.zip

Restriction Sites: SgfI-MluI

Cloning Scheme:

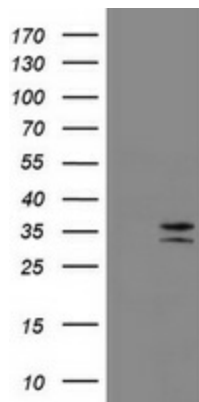


Plasmid Map:

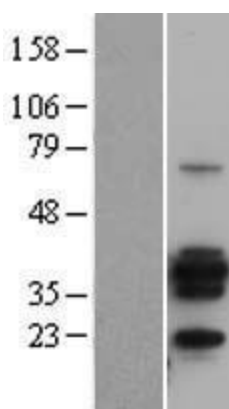


ACCN: NM_021950

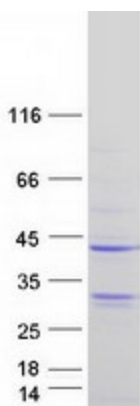
ORF Size:	891 bp
OTI Disclaimer:	The molecular sequence of this clone aligns with the gene accession number as a point of reference only. However, individual transcript sequences of the same gene can differ through naturally occurring variations (e.g. polymorphisms), each with its own valid existence. This clone is substantially in agreement with the reference, but a complete review of all prevailing variants is recommended prior to use. More info
OTI Annotation:	This clone was engineered to express the complete ORF with an expression tag. Expression varies depending on the nature of the gene.
Components:	The ORF clone is ion-exchange column purified and shipped in a 2D barcoded Matrix tube containing 10ug of transfection-ready, dried plasmid DNA (reconstitute with 100 ul of water).
Reconstitution Method:	<ol style="list-style-type: none">1. Centrifuge at 5,000xg for 5min.2. Carefully open the tube and add 100ul of sterile water to dissolve the DNA.3. Close the tube and incubate for 10 minutes at room temperature.4. Briefly vortex the tube and then do a quick spin (less than 5000xg) to concentrate the liquid at the bottom.5. Store the suspended plasmid at -20°C. The DNA is stable for at least one year from date of shipping when stored at -20°C.
RefSeq:	NM_021950.3 , NP_068769.2
RefSeq Size:	3331 bp
RefSeq ORF:	894 bp
Locus ID:	931
UniProt ID:	P11836
Cytogenetics:	11q12.2
Domains:	CD20
Protein Families:	Druggable Genome, Transmembrane
Protein Pathways:	Hematopoietic cell lineage
MW:	33.1 kDa
Gene Summary:	This gene encodes a member of the membrane-spanning 4A gene family. Members of this nascent protein family are characterized by common structural features and similar intron/exon splice boundaries and display unique expression patterns among hematopoietic cells and nonlymphoid tissues. This gene encodes a B-lymphocyte surface molecule which plays a role in the development and differentiation of B-cells into plasma cells. This family member is localized to 11q12, among a cluster of family members. Alternative splicing of this gene results in two transcript variants which encode the same protein. [provided by RefSeq, Jul 2008]

Product images:


HEK293T cells were transfected with the pCMV6-ENTRY control (Cat# [PS100001], Left lane) or pCMV6-ENTRY MS4A1 (Cat# RC201242, Right lane) cDNA for 48 hrs and lysed. Equivalent amounts of cell lysates (5 ug per lane) were separated by SDS-PAGE and immunoblotted with anti-MS4A1 (Cat# [TA800385]). Positive lysates [LY402889] (100ug) and [LC402889] (20ug) can be purchased separately from OriGene.



Western blot validation of overexpression lysate (Cat# [LY402889]) using anti-DDK antibody (Cat# [TA50011-100]). Left: Cell lysates from untransfected HEK293T cells; Right: Cell lysates from HEK293T cells transfected with RC201242 using transfection reagent MegaTran 2.0 (Cat# [TT210002]).



Coomassie blue staining of purified MS4A1 protein (Cat# [TP301242]). The protein was produced from HEK293T cells transfected with MS4A1 cDNA clone (Cat# RC201242) using MegaTran 2.0 (Cat# [TT210002]).