

Product datasheet for RC201238L3

POLD1 (NM_002691) Human Tagged Lenti ORF Clone

Product data:

Product Type:	Expression Plasmids
Product Name:	POLD1 (NM_002691) Human Tagged Lenti ORF Clone
Tag:	Myc-DDK
Symbol:	POLD1
Synonyms:	CDC2; CRCS10; MDPL; POLD
Mammalian Cell Selection:	Puromycin
Vector:	pLenti-C-Myc-DDK-P2A-Puro (PS100092)
E. coli Selection:	Chloramphenicol (34 ug/mL)
ORF Nucleotide Sequence:	The ORF insert of this clone is exactly the same as(RC201238).
Restriction Sites:	SgfI-MluI
Cloning Scheme:	

Cloning sites used for ORF Shuttling:



* The last codon before the Stop codon of the ORF.

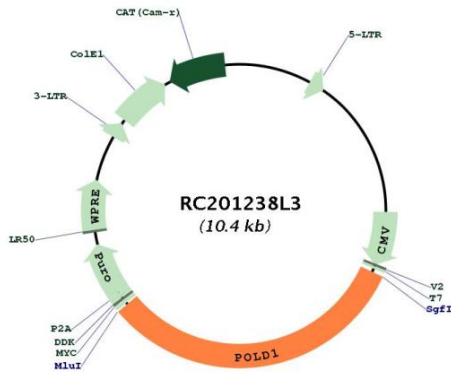
ACCN:	NM_002691
ORF Size:	3321 bp



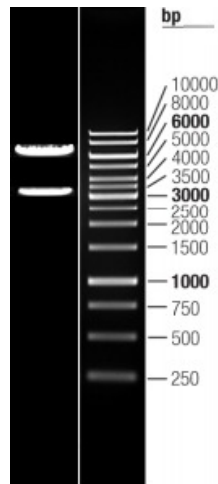
[View online »](#)

OTI Disclaimer:	The molecular sequence of this clone aligns with the gene accession number as a point of reference only. However, individual transcript sequences of the same gene can differ through naturally occurring variations (e.g. polymorphisms), each with its own valid existence. This clone is substantially in agreement with the reference, but a complete review of all prevailing variants is recommended prior to use. More info
OTI Annotation:	This clone was engineered to express the complete ORF with an expression tag. Expression varies depending on the nature of the gene.
Components:	The ORF clone is ion-exchange column purified and shipped in a 2D barcoded Matrix tube containing 10ug of transfection-ready, dried plasmid DNA (reconstitute with 100 ul of water).
Reconstitution Method:	<ol style="list-style-type: none">1. Centrifuge at 5,000xg for 5min.2. Carefully open the tube and add 100ul of sterile water to dissolve the DNA.3. Close the tube and incubate for 10 minutes at room temperature.4. Briefly vortex the tube and then do a quick spin (less than 5000xg) to concentrate the liquid at the bottom.5. Store the suspended plasmid at -20°C. The DNA is stable for at least one year from date of shipping when stored at -20°C.
RefSeq:	NM_002691.1
RefSeq Size:	3464 bp
RefSeq ORF:	3324 bp
Locus ID:	5424
UniProt ID:	P28340
Cytogenetics:	19q13.33
Domains:	DNA_pol_B_exo, DNA_pol_B, POLBc
Protein Families:	Druggable Genome, Stem cell - Pluripotency
Protein Pathways:	Base excision repair, DNA replication, Homologous recombination, Metabolic pathways, Mismatch repair, Nucleotide excision repair, Purine metabolism, Pyrimidine metabolism
MW:	123.6 kDa
Gene Summary:	This gene encodes the 125-kDa catalytic subunit of DNA polymerase delta. DNA polymerase delta possesses both polymerase and 3' to 5' exonuclease activity and plays a critical role in DNA replication and repair. Alternatively spliced transcript variants have been observed for this gene, and a pseudogene of this gene is located on the long arm of chromosome 6. [provided by RefSeq, Mar 2012]

Product images:



Circular map for RC201238L3



Double digestion of RC201238L3 using SgfI and MluI