

Product datasheet for RC201235

ISG15 (NM_005101) Human Tagged ORF Clone

Product data:

Product Type: Expression Plasmids
Product Name: ISG15 (NM_005101) Human Tagged ORF Clone
Tag: Myc-DDK
Symbol: ISG15
Synonyms: G1P2; hUCRP; IFI15; IMD38; IP17; UCRP
Mammalian Cell Selection: Neomycin
Vector: pCMV6-Entry (PS100001)
E. coli Selection: Kanamycin (25 ug/mL)
ORF Nucleotide Sequence: >RC201235 ORF sequence
Red=Cloning site Blue=ORF Green=Tags(s)

TTTTGTAATACGACTCACTATAGGGCGCCGGGAATTCGTCGACTGGATCCGGTACCGAGGAGATCTGCC
GCC**CGATCGCC**

ATGGGCTGGGACCTGACGGTGAAGATGCTGGCGGCAACGAATCCAGGTGTCCCTGAGCAGCTCCATGT
CGGTGTCAGAGCTGAAGGCGCAGATCACCCAGAAGATCGGCGTGCACGCCTTCCAGCAGCGTCTGGCTGT
CCACCCGAGCGGTGTGGCGCTGCAGGACAGGGTCCCCCTTCCAGCCAGGGCCTGGGCCCGGCAGCAGC
GTCCTGCTGGTGGTGGACAAATGCGACGAACCTCTGAACATCCTGGTGAAGAATAACAAGGGCCGACGCA
GCACCTACGAGGTGCGGCTGACGCAGACCGTGGCCACCTGAAGCAGCAAGTGAGCGGGCTGGAGGGTGT
GCAGGACGACCTGTTCTGGCTGACCTTCGAGGGGAAGCCCTGGAGGACCAGCTCCCCTGGGGGAGTAC
GGCCTCAAGCCCCTGAGCACCGTGTTCATGAATCTGCGCCTGCGGGGAGGCGGCACAGAGCTGGCGGGC
GGAGC

ACGCGTACGCGGCCGCTCGAGCAGAACTCATCTCAGAAGAGGATCTGGCAGCAAATGATATCCTGGATT
ACAAGGATGACGACGATAAGGTTTAA

Protein Sequence: >RC201235 protein sequence
Red=Cloning site Green=Tags(s)

MGWDLTVKMLAGNEFQVSLSSSMSVSELKAQITQKIGVHAFQQRRLAVHPSGVALQDRVPLASQGLGPGST
VLLVVDKCDPLNILVRNNKGRSSTYEVRLTQTV AHLKQQVSGLEGVQDDLFWLTFEGKPLEDQLPLGEY
GLKPLSTVFMNLRRLRGGTEPGGRS

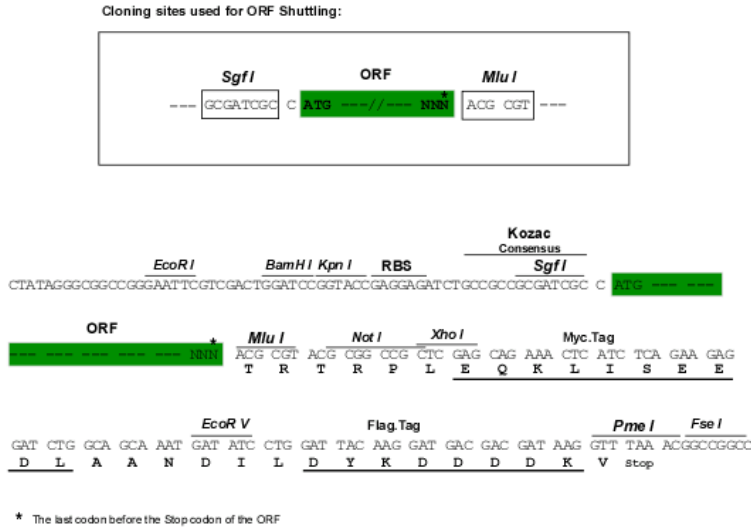
TRTRPLEQKLISEEDLAANDILDYKDDDDKV

Chromatograms: https://cdn.origene.com/chromatograms/mk6052_c09.zip



Restriction Sites: SgfI-MluI

Cloning Scheme:



ACCN: NM_005101

ORF Size: 495 bp

OTI Disclaimer: The molecular sequence of this clone aligns with the gene accession number as a point of reference only. However, individual transcript sequences of the same gene can differ through naturally occurring variations (e.g. polymorphisms), each with its own valid existence. This clone is substantially in agreement with the reference, but a complete review of all prevailing variants is recommended prior to use. [More info](#)

OTI Annotation: This clone was engineered to express the complete ORF with an expression tag. Expression varies depending on the nature of the gene.

Components: The ORF clone is ion-exchange column purified and shipped in a 2D barcoded Matrix tube containing 10ug of transfection-ready, dried plasmid DNA (reconstitute with 100 ul of water).

Reconstitution Method:

1. Centrifuge at 5,000xg for 5min.
2. Carefully open the tube and add 100ul of sterile water to dissolve the DNA.
3. Close the tube and incubate for 10 minutes at room temperature.
4. Briefly vortex the tube and then do a quick spin (less than 5000xg) to concentrate the liquid at the bottom.
5. Store the suspended plasmid at -20°C. The DNA is stable for at least one year from date of shipping when stored at -20°C.

Note: Plasmids are not sterile. For experiments where strict sterility is required, filtration with 0.22um filter is required.

RefSeq: [NM_005101.4](#)

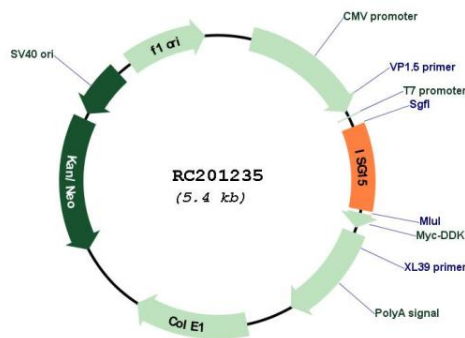
RefSeq Size: 685 bp

RefSeq ORF: 498 bp

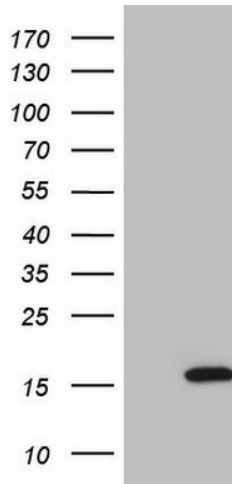
Locus ID: 9636
UniProt ID: [P05161](#)
Cytogenetics: 1p36.33
Domains: UBQ
Protein Families: Druggable Genome, Secreted Protein
Protein Pathways: RIG-I-like receptor signaling pathway
MW: 17.9 kDa

Gene Summary: The protein encoded by this gene is a ubiquitin-like protein that is conjugated to intracellular target proteins upon activation by interferon-alpha and interferon-beta. Several functions have been ascribed to the encoded protein, including chemotactic activity towards neutrophils, direction of ligated target proteins to intermediate filaments, cell-to-cell signaling, and antiviral activity during viral infections. While conjugates of this protein have been found to be noncovalently attached to intermediate filaments, this protein is sometimes secreted. [provided by RefSeq, Dec 2012]

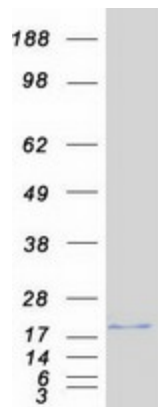
Product images:



Circular map for RC201235



HEK293T cells were transfected with the pCMV6-ENTRY control (Cat# [PS100001], Left lane) or pCMV6-ENTRY ISG15 (Cat# RC201235, Right lane) cDNA for 48 hrs and lysed. Equivalent amounts of cell lysates (5 ug per lane) were separated by SDS-PAGE and immunoblotted with anti-ISG15 (Cat# [TA807536])(1:2000).



Coomassie blue staining of purified ISG15 protein (Cat# [TP301235]). The protein was produced from HEK293T cells transfected with ISG15 cDNA clone (Cat# RC201235) using MegaTran 2.0 (Cat# [TT210002]).