

## Product datasheet for RC201234

### LYL1 (NM\_005583) Human Tagged ORF Clone

#### Product data:

Product Type: Expression Plasmids  
 Product Name: LYL1 (NM\_005583) Human Tagged ORF Clone  
 Tag: Myc-DDK  
 Symbol: LYL1  
 Synonyms: bHLHa18  
 Mammalian Cell Selection: Neomycin  
 Vector: pCMV6-Entry (PS100001)  
 E. coli Selection: Kanamycin (25 ug/mL)  
 ORF Nucleotide Sequence: >RC201234 representing NM\_005583  
 Red=Cloning site Blue=ORF Green=Tags(s)

TTTTGTAATACGACTCACTATAGGGCGGCCGGAATTCGTCGACTGGATCCGGTACCGAGGAGATCTGCC  
 GCC**CGGATCGCC**

ATGTGCCCGCCTCAGGCACAGGCAGAGGTGGGCCCCACCATGACTGAGAAGGCAGAGATGGTGTGTGCC  
 CCAGCCCAGCGCCTGCCCCACCCCTAAGCCTGCCTCGCCTGGGCCCCCGCAGGTGGAGGAGGTGGGCCA  
 CCGAGGAGGCTCCTCGCCCCCAGGCTGCCACCTGGTGTACCAGTGATCAGCCTGGGCCACAGCAGGCC  
 CCAGGGGTAGCCATGCCACCACAGAGCTGGGCACTCTGCGGCCCGCTGCTGCAACTCTCCACCTGG  
 GAACTGCCCGCCCACTTTGGCCCTGCACTACCACCTCACCCCTTCTCAACAGTGTCTACATTGGGCC  
 AGCAGGACCTTTTAGCATCTTCCCTAGCAGCCGTTGAAGCGGAGACCAAGCCACTGTGAGCTGGACCTG  
 GCTGAGGGGCACCCAGCCCCAGAAGTGGCCCGCGCGTGTTCACCAACAGCCGGGAGCGCTGGCGGCAGC  
 AGAACGTTAACGGCGCCTTCGCGGAGCTGAGGAAGCTGCTGCCGACGCACCCGCCGACCGGAAGCTGAG  
 CAAGAACGAGGTGCTCCGCTAGCCATGAAGTACATCGGCTTCTGGTGGGCTGCTGCGGACCAAGCC  
 GCAGCTCTGGCCGAGGCCACCCCTCCCGGCCCTCGAAACGGCCGGTGCACCGGGTCCCAGACGACG  
 GCGCCCGCGGGATCCGGACGCAGGGCCGAGGCGGCAGCGCGCTCGCAGCCCGCCCGCCCGGCCAGCC  
 CGACGGCAGCCCGGTGGAGCGGCCCGCCATCAAGATGGAGCAAACCGCTTTGAGCCAGAGGTGGC

**ACGCGT**ACGCGGCCGCTCGAGCAGAAACTCATCTCAGAAGAGGATCTGGCAGCAAATGATATCCTGGATT  
 ACAAGGATGACGACGATAAGGTTTAA



[View online »](#)

**Protein Sequence:** >RC201234 representing NM\_005583  
 Red=Cloning site Green=Tags(s)

MCPPQAQAEVGPMTTEKAEMVCAPSPAPAPPPKPASPGPPQVEEVGHRGGSSPRLPPGVPVISLGHSRP  
 PGVAMPPTTELGLRPLLQLSTLGTAPPTLALHYHPHFLNSVYIGPAGPFSIFPSSRLKRRP SHCEDL  
 AEGHQPKVARRVFTNSRERWRQQNVNGAF AELRKL LPTHPPDRKLSKNEVLR LAMKYIGFLVRLLRDQA  
 AALAAGPTPPGPRKRPVHRVPDDGARRGSGRRAEAAARSQPAPPADPDGSPGGAARPIKMEQTAL SPEVR

TRTRPLEQKLISEEDLAANDILDYKDDDDKV

**Chromatograms:** [https://cdn.origene.com/chromatograms/mg3807\\_a09.zip](https://cdn.origene.com/chromatograms/mg3807_a09.zip)

**Restriction Sites:** SgfI-MluI

**Cloning Scheme:**

Cloning sites used for ORF Shuttling:



\* The last codon before the Stop codon of the ORF

**ACCN:** NM\_005583

**ORF Size:** 840 bp

**OTI Disclaimer:** The molecular sequence of this clone aligns with the gene accession number as a point of reference only. However, individual transcript sequences of the same gene can differ through naturally occurring variations (e.g. polymorphisms), each with its own valid existence. This clone is substantially in agreement with the reference, but a complete review of all prevailing variants is recommended prior to use. [More info](#)

**OTI Annotation:** This clone was engineered to express the complete ORF with an expression tag. Expression varies depending on the nature of the gene.

**Components:** The ORF clone is ion-exchange column purified and shipped in a 2D barcoded Matrix tube containing 10ug of transfection-ready, dried plasmid DNA (reconstitute with 100 ul of water).

**Reconstitution Method:**

1. Centrifuge at 5,000xg for 5min.
2. Carefully open the tube and add 100ul of sterile water to dissolve the DNA.
3. Close the tube and incubate for 10 minutes at room temperature.
4. Briefly vortex the tube and then do a quick spin (less than 5000xg) to concentrate the liquid at the bottom.
5. Store the suspended plasmid at -20°C. The DNA is stable for at least one year from date of shipping when stored at -20°C.

**RefSeq:** [NM\\_005583.5](#)

**RefSeq Size:** 1510 bp

**RefSeq ORF:** 843 bp

**Locus ID:** 4066

**UniProt ID:** [P12980](#)

**Cytogenetics:** 19p13.13

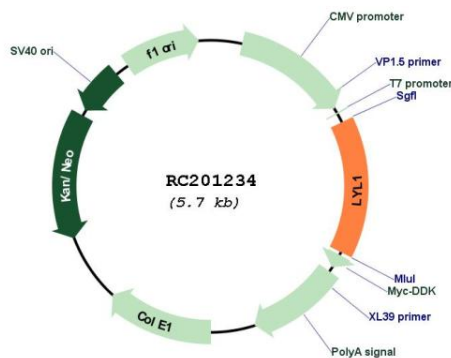
**Domains:** HLH

**Protein Families:** Druggable Genome, Transcription Factors

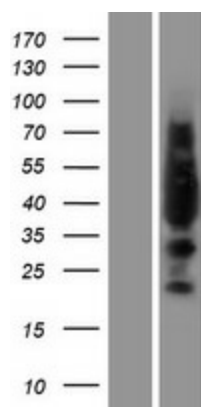
**MW:** 29.8 kDa

**Gene Summary:** This gene represents a basic helix-loop-helix transcription factor. The encoded protein may play roles in blood vessel maturation and hematopoiesis. A translocation between this locus and the T cell receptor beta locus (GeneID 6957) on chromosome 7 has been associated with acute lymphoblastic leukemia. [provided by RefSeq, Sep 2010]

### Product images:



Circular map for RC201234



Western blot validation of overexpression lysate (Cat# [LY417208]) using anti-DDK antibody (Cat# [TA50011-100]). Left: Cell lysates from untransfected HEK293T cells; Right: Cell lysates from HEK293T cells transfected with RC201234 using transfection reagent MegaTran 2.0 (Cat# [TT210002]).