

Product datasheet for RC201222

PLAUR (NM_002659) Human Tagged ORF Clone

Product data:

Product Type: Expression Plasmids
 Product Name: PLAUR (NM_002659) Human Tagged ORF Clone
 Tag: Myc-DDK
 Symbol: PLAUR
 Synonyms: CD87; U-PAR; UPAR; URKR
 Mammalian Cell Selection: Neomycin
 Vector: pCMV6-Entry (PS100001)
 E. coli Selection: Kanamycin (25 ug/mL)
 ORF Nucleotide Sequence: >RC201222 ORF sequence
 Red=Cloning site Blue=ORF Green=Tags(s)

TTTTGTAATACGACTCACTATAGGGCGGCCGGAATTCGTCGACTGGATCCGGTACCGAGGAGATCTGCC
 GCC**CGATCGCC**

ATGGGTACCCGCCGCTGCTGCCGCTGCTGCTGCTGCTCCACACCTGCGTCCCAGCCTCTTGGGGCCTGC
 GGTGCATGCAGTGAAGACCAACGGGATTGCCGTGTGGAAGAGTGCGCCCTGGGACAGGACCTCTGCAG
 GACCACGATCGTGCCTTGTGGGAAGAAGGAGAAGAGCTGGAGCTGGTGGAGAAAAGCTGTACCCACTCA
 GAGAAGACCAACAGGACCCTGAGCTATCGGACTGGCTTGAAGATCACCAGCCTTACCGAGTTGTGTGTG
 GGTTAGACTTGTGCAACCAGGGCAACTTGCCCGGGCTGTACCTATTCCGAAGCGTTACCTCGAATG
 CATTTCCTGTGGCTCATCAGACATGAGCTGTGAGAGGGGCCGGCACCCAGAGCCTGCAGTGCCGCAGCCCT
 GAAGAACAGTGCCTGGATGTGGTGACCCACTGGATCCAGGAAGGTGAAGAAGGGCGTCCAAGGATGACC
 GCCACCTCCGTGGCTGTGGCTACCTTCCCGGCTGCCCGGGCTCCAATGGTTTCCACAACAACGACACCTT
 CCACCTTCTGAAATGCTGCAACACCACCAAAATGCAACGAGGGCCAATCCTGGAGCTTAAAAATCTGCCG
 CAGAAATGGCCGCCAGTGTACAGCTGCAAGGGGAACAGCACCCATGGATGCTCCTCTGAAGAGACTTTC
 TCATTGACTGCCGAGGCCCATGAATCAATGTCTGGTAGCCACCGGCACTCACGAACCGAAAAACCAAG
 CTATATGGTAAGAGGCTGTGCAACCGCCTCAATGTGCCAATGCCCACCTGGGTGACGCCTTCAGCATG
 AACCACATTGATGCTCCTGCTGTAATAAAGTGGCTGTAACCACCCAGACCTGGATGTCCAGTACCGCA
 GTGGGGCTGCTCCTCAGCCTGGCCATGCCATCTCAGCCTCACCATCACCTGCTAATGACTGCCAGACT
 GTGGGGAGGCACTCTCCTCTGGACC

ACGCGTACGCGGCCGCTCGAGCAGAACTCATCTCAGAAGAGGATCTGGCAGCAATGATATCCTGGATT
 ACAAGGATGACGACGATAAGGTTTAA



[View online »](#)

Protein Sequence: >RC201222 protein sequence
Red=Cloning site Green=Tags(s)

MGHPPLLPLLLLHTCVPASWGLRCMQCKTNGDCRVEECALGQDLCRTTIVRLWEEGEELELVEKSCHTS
 EKTNRTL SYRTGLKITSLETVVCGLDLCNQNSGRAVYTSRSRYLEICISGSSDMSCEGRHQSLQCRSP
 EEQCLDVVTHWIQEGEEGRPKDDRHLRGCYLPGCPGSGNGFHNDTFHFLKCCNTTKCNEGPILELENLP
 QNGRQCYSCKGNSTHGCSSEETFLIDCRGPMNQCLVATGTHEPKNQSYMVRGCATASMCQHAHLGDAFSM
 NHIDVSCCTKSGCNHPDLVDVYRSGAAPQPGPAHLSLTITLLMTARLWGGTLLWT

TRTRPLEQKLISEEDLAANDILDYKDDDDKV

Chromatograms: https://cdn.origene.com/chromatograms/mk6150_e11.zip

Restriction Sites: SgfI-MluI

Cloning Scheme:



ACCN: NM_002659

ORF Size: 1005 bp

OTI Disclaimer: The molecular sequence of this clone aligns with the gene accession number as a point of reference only. However, individual transcript sequences of the same gene can differ through naturally occurring variations (e.g. polymorphisms), each with its own valid existence. This clone is substantially in agreement with the reference, but a complete review of all prevailing variants is recommended prior to use. [More info](#)

OTI Annotation: This clone was engineered to express the complete ORF with an expression tag. Expression varies depending on the nature of the gene.

Components: The ORF clone is ion-exchange column purified and shipped in a 2D barcoded Matrix tube containing 10ug of transfection-ready, dried plasmid DNA (reconstitute with 100 ul of water).

Reconstitution Method:

1. Centrifuge at 5,000xg for 5min.
2. Carefully open the tube and add 100ul of sterile water to dissolve the DNA.
3. Close the tube and incubate for 10 minutes at room temperature.
4. Briefly vortex the tube and then do a quick spin (less than 5000xg) to concentrate the liquid at the bottom.
5. Store the suspended plasmid at -20°C. The DNA is stable for at least one year from date of shipping when stored at -20°C.

Note: Plasmids are not sterile. For experiments where strict sterility is required, filtration with 0.22um filter is required.

RefSeq: [NM_002659.4](#)

RefSeq Size: 1570 bp

RefSeq ORF: 1008 bp

Locus ID: 5329

UniProt ID: [Q03405](#)

Cytogenetics: 19q13.31

Domains: LU

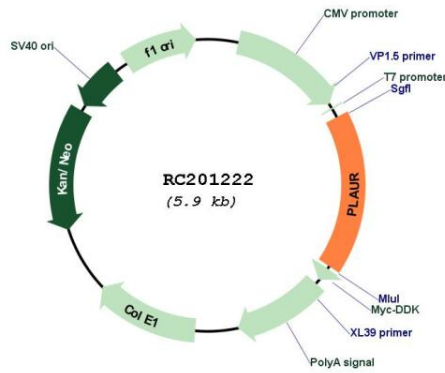
Protein Families: Druggable Genome, Secreted Protein

Protein Pathways: Complement and coagulation cascades

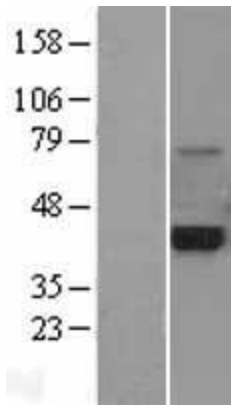
MW: 37 kDa

Gene Summary: This gene encodes the receptor for urokinase plasminogen activator and, given its role in localizing and promoting plasmin formation, likely influences many normal and pathological processes related to cell-surface plasminogen activation and localized degradation of the extracellular matrix. It binds both the proprotein and mature forms of urokinase plasminogen activator and permits the activation of the receptor-bound pro-enzyme by plasmin. The protein lacks transmembrane or cytoplasmic domains and may be anchored to the plasma membrane by a glycosyl-phosphatidylinositol (GPI) moiety following cleavage of the nascent polypeptide near its carboxy-terminus. However, a soluble protein is also produced in some cell types. Alternative splicing results in multiple transcript variants encoding different isoforms. The proprotein experiences several post-translational cleavage reactions that have not yet been fully defined. [provided by RefSeq, Jul 2008]

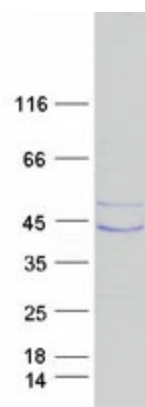
Product images:



Circular map for RC201222



Western blot validation of overexpression lysate (Cat# [LY400943]) using anti-DDK antibody (Cat# [TA50011-100]). Left: Cell lysates from untransfected HEK293T cells; Right: Cell lysates from HEK293T cells transfected with RC201222 using transfection reagent MegaTran 2.0 (Cat# [TT210002]).



Coomassie blue staining of purified PLAUR protein (Cat# [TP301222]). The protein was produced from HEK293T cells transfected with PLAUR cDNA clone (Cat# RC201222) using MegaTran 2.0 (Cat# [TT210002]).