

Product datasheet for **RC201221**

CP2c (TFCP2) (NM_005653) Human Tagged ORF Clone

Product data:

Product Type:	Expression Plasmids
Product Name:	CP2c (TFCP2) (NM_005653) Human Tagged ORF Clone
Tag:	Myc-DDK
Symbol:	CP2c
Synonyms:	LBP1C; LSF; LSF1D; SEF; TFCP2C
Mammalian Cell Selection:	Neomycin
Vector:	pCMV6-Entry (PS100001)
E. coli Selection:	Kanamycin (25 ug/mL)



[View online »](#)

ORF Nucleotide Sequence:

>RC201221 ORF sequence
 Red=Cloning site Blue=ORF Green=Tags(s)

TTTTGTAATACGACTCACTATAGGGCGGCCGGGAATTCGTGACTGGATCCGGTACCGAGGAGATCTGCC
 GCC**CGGATCGCC**

ATGGCCTGGGCTCTGAAGCTGCCTCTGGCCGACGAAGTATTGAATCCGGTTGGTGCAGGACTTTGATG
 CTAGCCTGTCGGGATCGGCCAGGAAGTGGTGCCTATAGCATGAGTGTCTTGCATTGACC
 CATTTTTAAGCAAGAAGAGTTCGAGTTTGCCTCCTGATAATGAGAATAAAATCCTGCCTTTCAATATGTG
 CTTTGTGCTGCTACCTCTCCAGCAGTGAAGTCCATGATGAAACCCTAACGTATCTCAATCAAGGACAGT
 CTTATGAAATTCGAATGCTAGACAATAGGAACTTGGAGAACTCCAGAAATTAATGGCAAATTTGGTAA
 GAGTATATTCCGTGTGGTGTCCATGACAGAAGGCTTCAGTACACTGAGCATCAGCAGCTAGAGGGCTGG
 AGGTGGAACCGACCTGGAGACAGAATTCCTGACATAGATATCCCGATGTCTGTGGGTATAATCGATCCTA
 GGGCTAATCCAACCACTAAATACAGTGGAGTTCCTGTGGGACCCTGCAAAGAGGACATCTGTGTTTAT
 TCAGGTGCACTGTATTAGCACAGAGTTCCTATGAGGAAACATGGTGGAGAAAAGGGGTGCCATCCGA
 GTACAAATAGATACCTTCAAGGAGAATGAAAACGGGGAATATACTGAGCACTTACTCGGCCAGCTGCC
 AGATCAAAGTTTTCAAGCCAAAGGTGCAGACAGAAAGCAAAAAACGGATAGGGAATAATGGAGAAACG
 AACACCTCATGAAAAGGAGAAATATCAGCCTTCTATGAGACAACCATACTCACAGAGTGTCTCCATGG
 CCCGAGATCACGTATGTCAATACTCCCATCACCTGGCTTCAACAGTTCATAGCAGTTCCTTCTCTTG
 GGAAGGAAATGGTTCACCAAACCAGCCAGAGCCACCCCTCCAGTCACAGATAACCTTACCAAC
 AACCACACCTCAGGAAGCTCAGCAGTGGTTCATCGAAATCGTTTTCTACATTCACAAGGCTTTTACA
 AACTTCTCAGGGCAGATTTATTGAAATTAAGTAACTAGAGATGATGTGATCCAATCTGTGGCCCTGCAGT
 GAACTCAGACTTTTTAATGCATTAAGGCGGATGGTGGTCCAAGTTAACCTTTATGTTTGTGAGGA
 ATCACTGCAGTTGAGGGAGCAGCAACAACAGCAGCAGCAACAGCAGCAGAGAAGCATGAGGATGGAGACTCA
 AATGGTACTTTCTCGTTTACCATGCTATCTATCTAGAAGAACTAACAGCTGTTGAATTGACAGAAAAA
 TTGCTCAGCTTTTTCAGCATTCCCTTGCAGATCAGCCAGATTTACAAGCAGGGGCCAACAGGAATTCA
 TGTGCTCATCAGTGTGAGATGATACAGAACTTTCAGGAAGAAGCATGTTTTATTCTGGACACAATGAAA
 GCAGAAACCAATGATAGCTATCATATCATACTGAAG

ACGCGTACGCGGCCGCTCGAGCAGAACTCATCTCAGAAGAGGATCTGGCAGCAAATGATATCCTGGATT
 ACAAGGATGACGACGATAAGGTTTAA

Protein Sequence:

>RC201221 protein sequence
 Red=Cloning site Green=Tags(s)

MAWALKLPLADEVIESGLVQDFDASLSGIGQELGAGAYSMSDVLALPIFKQESSLPPDNENKILPFQYV
 LCAATSPAVKLHDETLTYLNQQSYEIRMLDNRKLGELPEINGKLVKSI FRVVFHRRRLQYTEHQLEGW
 RWNRPGRILDIDIPMSVGIIDPRANPTQLNVEFLWDPKRTSVFIQVHCISTEFTMRKHGGEKGVPRF
 VQIDTFKENENGEYTEHLHSASCQIKVFKPKGADRKQKTDREKMEKRTPEHEKEYQPSYETTILTECSPW
 PEITYVNNSPSPGFNSSHSSFLGEGNGSPNHQPEPPPVTDNLLPTTTPQEAQQWLHRNRFSTFTRLFT
 NFSGADLLKLTRDDVIQICGPADGIRLFNALKGRMVRPRLTIYVCQESLQLREQQQQQQQKHEDGDS
 NGTFFVYHAIYLEELTAVELTEKIAQLFSISPCQISQIYKQGPTGIHVLISDEMIQNFQEEACFILD
 TMKAETNDSYHIILK

TRTRPLEQKLISEEDLAANDILDYKDDDDKV

Chromatograms:

https://cdn.origene.com/chromatograms/mk6395_e12.zip

Restriction Sites:

Sgfl-Mlul

Cloning Scheme:



ACCN: NM_005653

ORF Size: 1506 bp

OTI Disclaimer: The molecular sequence of this clone aligns with the gene accession number as a point of reference only. However, individual transcript sequences of the same gene can differ through naturally occurring variations (e.g. polymorphisms), each with its own valid existence. This clone is substantially in agreement with the reference, but a complete review of all prevailing variants is recommended prior to use. [More info](#)

OTI Annotation: This clone was engineered to express the complete ORF with an expression tag. Expression varies depending on the nature of the gene.

Components: The ORF clone is ion-exchange column purified and shipped in a 2D barcoded Matrix tube containing 10ug of transfection-ready, dried plasmid DNA (reconstitute with 100 ul of water).

- Reconstitution Method:
1. Centrifuge at 5,000xg for 5min.
 2. Carefully open the tube and add 100ul of sterile water to dissolve the DNA.
 3. Close the tube and incubate for 10 minutes at room temperature.
 4. Briefly vortex the tube and then do a quick spin (less than 5000xg) to concentrate the liquid at the bottom.
 5. Store the suspended plasmid at -20°C. The DNA is stable for at least one year from date of shipping when stored at -20°C.

RefSeq: [NM_005653.5](#)

RefSeq Size: 3715 bp

RefSeq ORF: 1509 bp

Locus ID: 7024

UniProt ID: [Q12800](#)

Cytogenetics: 12q13.12-q13.13

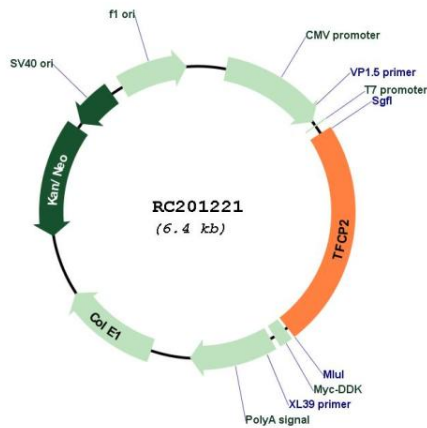
Domains: CP2

Protein Families: Transcription Factors

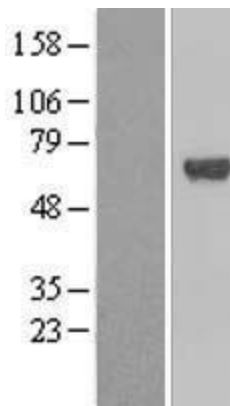
MW: 57.3 kDa

Gene Summary: This gene encodes a transcription factor that binds the alpha-globin promoter and activates transcription of the alpha-globin gene. The encoded protein regulates erythroid gene expression, plays a role in the transcriptional switch of globin gene promoters, and it activates many other cellular and viral gene promoters. The gene product interacts with certain inflammatory response factors, and polymorphisms of this gene may be involved in the pathogenesis of Alzheimer's disease. [provided by RefSeq, Mar 2010]

Product images:



Circular map for RC201221



Western blot validation of overexpression lysate (Cat# [LY417156]) using anti-DDK antibody (Cat# [TA50011-100]). Left: Cell lysates from untransfected HEK293T cells; Right: Cell lysates from HEK293T cells transfected with RC201221 using transfection reagent MegaTran 2.0 (Cat# [TT210002]).