

Product datasheet for RC201217

CRIP1 (NM_001311) Human Tagged ORF Clone

Product data:

Product Type: Expression Plasmids
Product Name: CRIP1 (NM_001311) Human Tagged ORF Clone
Tag: Myc-DDK
Symbol: CRIP1
Synonyms: CRHP; CRIP; CRP-1; CRP1
Mammalian Cell Selection: Neomycin
Vector: pCMV6-Entry (PS100001)
E. coli Selection: Kanamycin (25 ug/mL)
ORF Nucleotide Sequence: >RC201217 ORF sequence
 Red=Cloning site Blue=ORF Green=Tags(s)

TTTGTGTAATACGACTCACTATAGGGCGGCCGGAATTCGTCGACTGGATCCGGTACCGAGGAGATCTGCC
 GCCCGCATCGCC

ATGCCCAAGTGTCCTCAAGTGCAACAAGGAGGTGTACTTCGCCGAGAGGGTGACCTCTCTGGGCAAGGACT
 GGCATCGGCCCTGCCTGAAGTGCAGAAATGTGGGAAGACGCTGACCTCTGGGGCCACGCTGAGCACGA
 AGGCAACCCTACTGCAACCACCCTGCTACGCAGCCATGTTTGGGCCTAAAGGCTTTGGCGGGGCGGA
 GCCGAGAGCCACACTTTCAAG

ACGCGTACGCGGCCGCTCGAGCAGAACTCATCTCAGAAGAGGATCTGGCAGCAAATGATATCCTGGATT
 ACAAGGATGACGACGATAAGGTTTAA

Protein Sequence: >RC201217 protein sequence
 Red=Cloning site Green=Tags(s)
 MPKCPKCNKEVYFAERVTS LGKDWHRPCLKCEKCGKTLTSGGHAEHEGKPYCNHPCYAAMFGPKGFGRGG
 AESHTFK

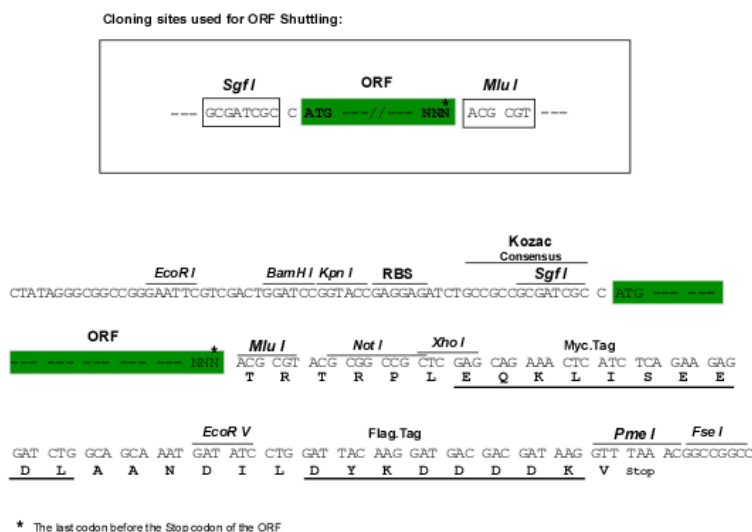
TRTRPLEQKLISEEDLAANDILDYKDDDDKV

Chromatograms: https://cdn.origene.com/chromatograms/mk6627_c01.zip

Restriction Sites: SgfI-MluI



[View online »](#)

Cloning Scheme:


ACCN: NM_001311

ORF Size: 231 bp

OTI Disclaimer: The molecular sequence of this clone aligns with the gene accession number as a point of reference only. However, individual transcript sequences of the same gene can differ through naturally occurring variations (e.g. polymorphisms), each with its own valid existence. This clone is substantially in agreement with the reference, but a complete review of all prevailing variants is recommended prior to use. [More info](#)

OTI Annotation: This clone was engineered to express the complete ORF with an expression tag. Expression varies depending on the nature of the gene.

Components: The ORF clone is ion-exchange column purified and shipped in a 2D barcoded Matrix tube containing 10ug of transfection-ready, dried plasmid DNA (reconstitute with 100 ul of water).

Reconstitution Method:

1. Centrifuge at 5,000xg for 5min.
2. Carefully open the tube and add 100ul of sterile water to dissolve the DNA.
3. Close the tube and incubate for 10 minutes at room temperature.
4. Briefly vortex the tube and then do a quick spin (less than 5000xg) to concentrate the liquid at the bottom.
5. Store the suspended plasmid at -20°C. The DNA is stable for at least one year from date of shipping when stored at -20°C.

RefSeq: [NM_001311.5](#)

RefSeq Size: 480 bp

RefSeq ORF: 234 bp

Locus ID: 1396

UniProt ID: [P50238](#)

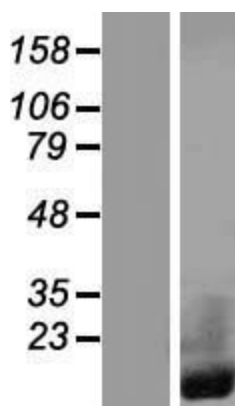
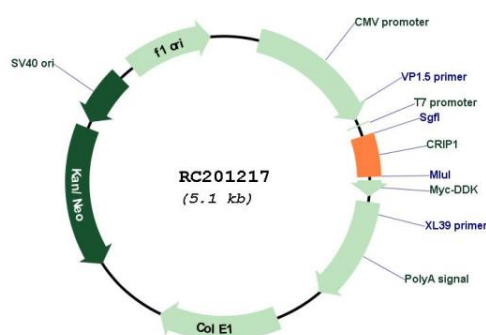
Cytogenetics: 14q32.33

Domains: LIM

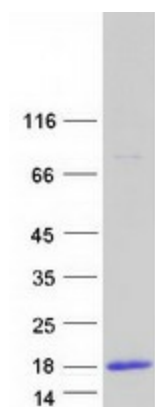
MW: 8.5 kDa

Gene Summary: Cysteine-rich intestinal protein (CRIP) belongs to the LIM/double zinc finger protein family, members of which include cysteine- and glycine-rich protein-1 (CSRP1; MIM 123876), rhombotin-1 (RBTN1; MIM 186921), rhombotin-2 (RBTN2; MIM 180385), and rhombotin-3 (RBTN3; MIM 180386). CRIP may be involved in intestinal zinc transport (Hempe and Cousins, 1991 [PubMed 1946385]).[supplied by OMIM, Mar 2008]

Product images:



Western blot validation of overexpression lysate (Cat# [LY420018]) using anti-DDK antibody (Cat# [TA50011-100]). Left: Cell lysates from untransfected HEK293T cells; Right: Cell lysates from HEK293T cells transfected with RC201217 using transfection reagent MegaTran 2.0 (Cat# [TT210002]).



Coomassie blue staining of purified CRIP1 protein (Cat# [TP301217]). The protein was produced from HEK293T cells transfected with CRIP1 cDNA clone (Cat# RC201217) using MegaTran 2.0 (Cat# [TT210002]).