

Product datasheet for RC201211

Suppressor of Ty 4 homolog 1 (SUPT4H1) (NM_003168) Human Tagged ORF Clone

Product data:

Product Type: Expression Plasmids
Product Name: Suppressor of Ty 4 homolog 1 (SUPT4H1) (NM_003168) Human Tagged ORF Clone
Tag: Myc-DDK
Symbol: Suppressor of Ty 4 homolog 1
Synonyms: SPT4; SPT4H; Supt4a; SUPT4H
Mammalian Cell Selection: Neomycin
Vector: pCMV6-Entry (PS100001)
E. coli Selection: Kanamycin (25 ug/mL)
ORF Nucleotide Sequence: >RC201211 ORF sequence
 Red=Cloning site Blue=ORF Green=Tags(s)

TTTTGTAATACGACTCACTATAGGGCGGCCGGAATTCGTCGACTGGATCCGGTACCGAGGAGATCTGCC
GCCCGCATCGCC

ATGGCCCTGGAGACGGTGCCGAAGGACCTGCGGCATCTGCGGCCTGTTTGCTGTGTTGCTGGTCAAGA
CTATAGACCAGTTTGAATATGATGGTTGTGACAATTGTGATGCATATCTACAAATGAAGGGTAACCGAGA
GATGGTATATGACTGCACTAGCTCTTCTTTGATGGAATCATTGCGATGATGAGTCCAGAGGACAGCTGG
GTCTCCAAGTGGCAGCGAGTCAGTAACTTAAAGCCAGGTATATGCGGTGTGAGTCACTGGTCCGCTGC
CCCAAGGAATCGTGGGAGCTGAAAAGTCGAGGAGTGGCCTACAAATCCAGAGACACAGCTATAAAGAC
C

ACGCGTACGCGGCCGCTCGAGCAGAACTCATCTCAGAAGAGGATCTGGCAGCAAATGATATCCTGGATT
ACAAGGATGACGACGATAAGGTTTAA

Protein Sequence: >RC201211 protein sequence
 Red=Cloning site Green=Tags(s)
 MALETVPKDLRHLRACLCSLVKTIQFEYDGCNCDAYLQMKGNREMYDYDCTSSSFDGIIAMMSPEDSW
 VSKWQRVSNFKPGVYAVSVTGRLPQGIIVRELKSRGVAYKSRDTAIKT

TRTRPLEQKLI SEEDLAANDILDYKDDDDKV

Chromatograms: https://cdn.origene.com/chromatograms/mk6389_a08.zip

Restriction Sites: SgfI-MluI



[View online »](#)

Cloning Scheme:



ACCN: NM_003168

ORF Size: 351 bp

OTI Disclaimer: The molecular sequence of this clone aligns with the gene accession number as a point of reference only. However, individual transcript sequences of the same gene can differ through naturally occurring variations (e.g. polymorphisms), each with its own valid existence. This clone is substantially in agreement with the reference, but a complete review of all prevailing variants is recommended prior to use. [More info](#)

OTI Annotation: This clone was engineered to express the complete ORF with an expression tag. Expression varies depending on the nature of the gene.

Components: The ORF clone is ion-exchange column purified and shipped in a 2D barcoded Matrix tube containing 10ug of transfection-ready, dried plasmid DNA (reconstitute with 100 ul of water).

Reconstitution Method:

1. Centrifuge at 5,000xg for 5min.
2. Carefully open the tube and add 100ul of sterile water to dissolve the DNA.
3. Close the tube and incubate for 10 minutes at room temperature.
4. Briefly vortex the tube and then do a quick spin (less than 5000xg) to concentrate the liquid at the bottom.
5. Store the suspended plasmid at -20°C. The DNA is stable for at least one year from date of shipping when stored at -20°C.

Note: Plasmids are not sterile. For experiments where strict sterility is required, filtration with 0.22um filter is required.

RefSeq: [NM_003168.3](#)

RefSeq Size: 1545 bp

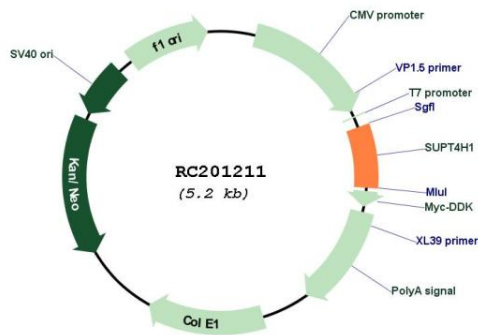
RefSeq ORF: 354 bp

Locus ID: 6827
 UniProt ID: [P63272](#)
 Cytogenetics: 17q22

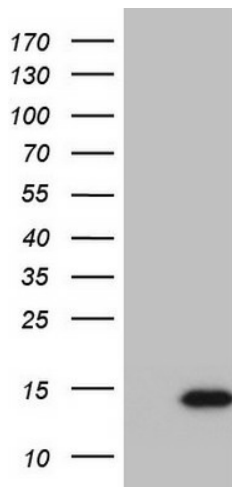
Protein Families: Transcription Factors
 MW: 13.2 kDa

Gene Summary: This gene encodes the small subunit of DRB (5,6-dichloro-1-beta-d-ribofuranosylbenzimidazole) sensitivity-inducing factor (DSIF) complex, which regulates mRNA processing and transcription elongation by RNA polymerase II. The encoded protein is localized to the nucleus and interacts with the large subunit (SUPT5H) to form the DSIF complex. Related pseudogenes have been identified on chromosomes 2 and 12. Alternatively spliced transcript variants have been found for this gene. [provided by RefSeq, Nov 2012]

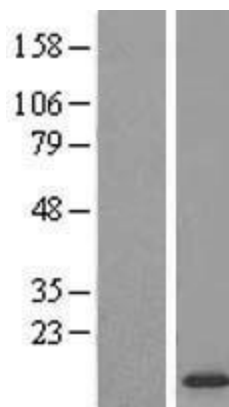
Product images:



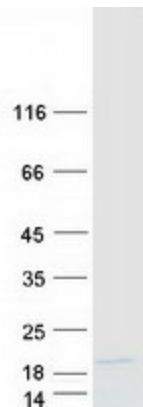
Circular map for RC201211



HEK293T cells were transfected with the pCMV6-ENTRY control (Cat# [PS100001], Left lane) or pCMV6-ENTRY SUPT4H1 (Cat# RC201211, Right lane) cDNA for 48 hrs and lysed. Equivalent amounts of cell lysates (5 ug per lane) were separated by SDS-PAGE and immunoblotted with anti-SUPT4H1(Cat# [TA803431]). Positive lysates [LY418857] (100ug) and [LC418857] (20ug) can be purchased separately from OriGene.



Western blot validation of overexpression lysate (Cat# [LY418857]) using anti-DDK antibody (Cat# [TA50011-100]). Left: Cell lysates from untransfected HEK293T cells; Right: Cell lysates from HEK293T cells transfected with RC201211 using transfection reagent MegaTran 2.0 (Cat# [TT210002]).



Coomassie blue staining of purified SUPT4H1 protein (Cat# [TP301211]). The protein was produced from HEK293T cells transfected with SUPT4H1 cDNA clone (Cat# RC201211) using MegaTran 2.0 (Cat# [TT210002]).