

## Product datasheet for RC201210

### TRIB2 (NM\_021643) Human Tagged ORF Clone

#### Product data:

Product Type:	Expression Plasmids
Product Name:	TRIB2 (NM_021643) Human Tagged ORF Clone
Tag:	Myc-DDK
Symbol:	TRIB2
Synonyms:	C5FW; GS3955; TRB2
Mammalian Cell Selection:	Neomycin
Vector:	pCMV6-Entry (PS100001)
E. coli Selection:	Kanamycin (25 ug/mL)
ORF Nucleotide Sequence:	>RC201210 ORF sequence Red=Cloning site Blue=ORF Green=Tags(s)

TTTTGTAATACGACTCACTATAGGGCGGCCGGAATTCGTCGACTGGATCCGGTACCGAGGAGATCTGCC  
GCC**CGATCGCC**

ATGAACATACACAGGTCTACCCCATCACAAATAGCGAGATATGGGAGATCGCGGAACAAAACCCAGGATT  
TCGAAGAGTTGTCGTCTATAAGGTCCGCGGAGCCAGCCAGAGTTTCAGCCCGAACCTCGGCTCCCCGAG  
CCCGCCGAGACTCCGAACCTGTCGATTGCGTTTCTTGTATCGGAAATACTTATTGTTGGAACCTCTG  
GAGGGAGACCACGTTTTTCGTGCCGTGCATCTGCACAGCGGAGAGGAGCTGGTGTCAAGGTGTTTGATA  
TCAGCTGTACCAGGAATCCCTGGCACCGTGCTTTTGCCTGTCTGCTCATAGTAACATCAACCAAATCAC  
TGAATTATCCTGGGTGAGACCAAAGCCTATGTGTTCTTTGAGCGAAGCTATGGGGACATGCATTCCTTC  
GTCCGCACCTGCAAGAAGCTGAGAGAGGAGGAGCCAGACTGTTCTACCAGATTGCCTCGGCAGTGG  
CCCACTGCCATGACGGGGGGCTGGTGTGCGGGACCTCAAGCTGCGGAAATTCATCTTTAAGGACGAAGA  
GAGGACTCGGGTCAAGCTGGAAGCCTGGAAGACGCCTACATTCTGCGGGGAGATGATGATTCCCTCTCC  
GACAAGCATGGCTGCCCGGCTTACGTAAGCCAGAGATCTTGAACACCAGTGGCAGCTACTCGGGCAAAG  
CAGCCGACGTGTGGAGCCTGGGGTGATGCTGTACACCATGTTGGTGGGGCGGTACCTTTCCATGACAT  
TGAACCCAGCTCCCTCTCAGCAAGATCCGGCGTGCCAGTTCAACATTCAGAGACTCTGTCCGCCAAG  
GCCAAGTGCCCTCATCCGAAGCATTCTGCGTCGGGAGCCCTCAGAGCGGCTGACCTCGCAGGAAATCTGG  
ACCATCCTTGGTTTTCTACAGATTTTAGCGTCTCGAATTCAGCATATGGTGCTAAGGAAGTGTCTGACCA  
GCTGGTGCCGACGTCAACATGGAAGAGAACTGGACCCTTTCTTTAAC

**ACGCGT**ACGCGGCCGCTCGAGCAGAAACTCATCTCAGAAGAGGATCTGGCAGCAAATGATATCCTGGATT  
ACAAGGATGACGACGATAAGGTTTAA



[View online »](#)

**Protein Sequence:** >RC201210 protein sequence  
Red=Cloning site Green=Tags(s)

MNIHRSTPITARYGRSRNKTQDFEELSSIRSAEPSQSFSPNLGSPSPPETPNLSHCVSCIGKYLLLEPL  
 EGDHVFRAVHLHSGEELVCKVFDISCYQESLAPCFCLSAHSNINQITEIILGETKAYVFFERSYGDMMHSF  
 VRTCKKLREEEAARLFYQIASAVAHCHDGLVLRDLKLRKFIKDEERTRVKLESLEDAYILRGDDDSL  
 DKHGCPAYVSPEILNTSGSYSGKAADVWSLGVMLYTMLVGRYPFHDIEPSSLFSKIRRGQFNIPETLSPK  
 AKCLIRSI LRREPSERLTSQEILDHPWFSTDFSVNSAYGAKEVSDQLVPDVNMEENLDPFFN

TRTRPLEQKLISEEDLAANDILDYKDDDDKV

**Chromatograms:** [https://cdn.origene.com/chromatograms/mk6084\\_c04.zip](https://cdn.origene.com/chromatograms/mk6084_c04.zip)

**Restriction Sites:** SgfI-MluI

**Cloning Scheme:**

Cloning sites used for ORF Shuttling:



\* The last codon before the Stop codon of the ORF

**ACCN:** NM\_021643

**ORF Size:** 1029 bp

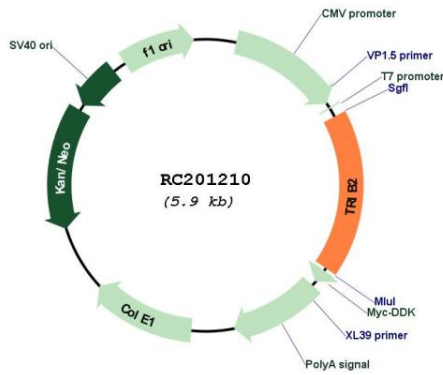
**OTI Disclaimer:** The molecular sequence of this clone aligns with the gene accession number as a point of reference only. However, individual transcript sequences of the same gene can differ through naturally occurring variations (e.g. polymorphisms), each with its own valid existence. This clone is substantially in agreement with the reference, but a complete review of all prevailing variants is recommended prior to use. [More info](#)

**OTI Annotation:** This clone was engineered to express the complete ORF with an expression tag. Expression varies depending on the nature of the gene.

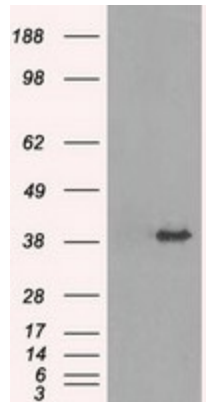
**Components:** The ORF clone is ion-exchange column purified and shipped in a 2D barcoded Matrix tube containing 10ug of transfection-ready, dried plasmid DNA (reconstitute with 100 ul of water).

<b>Reconstitution Method:</b>	<ol style="list-style-type: none"><li>1. Centrifuge at 5,000xg for 5min.</li><li>2. Carefully open the tube and add 100ul of sterile water to dissolve the DNA.</li><li>3. Close the tube and incubate for 10 minutes at room temperature.</li><li>4. Briefly vortex the tube and then do a quick spin (less than 5000xg) to concentrate the liquid at the bottom.</li><li>5. Store the suspended plasmid at -20°C. The DNA is stable for at least one year from date of shipping when stored at -20°C.</li></ol>
<b>RefSeq:</b>	<a href="#">NM_021643.3</a>
<b>RefSeq Size:</b>	4408 bp
<b>RefSeq ORF:</b>	1032 bp
<b>Locus ID:</b>	28951
<b>UniProt ID:</b>	<a href="#">Q92519</a>
<b>Cytogenetics:</b>	2p24.3
<b>Domains:</b>	pkinase, TyrKc, S_TKc
<b>Protein Families:</b>	Druggable Genome, Protein Kinase
<b>MW:</b>	38.8 kDa
<b>Gene Summary:</b>	<p>This gene encodes one of three members of the Tribbles family. The Tribbles members share a Trb domain, which is homologous to protein serine-threonine kinases, but lacks the active site lysine and probably lacks a catalytic function. The Tribbles proteins interact and modulate the activity of signal transduction pathways in a number of physiological and pathological processes. This Tribbles member induces apoptosis of cells mainly of the hematopoietic origin. It has been identified as a protein up-regulated by inflammatory stimuli in myeloid (THP-1) cells, and also as an oncogene that inactivates the transcription factor C/EBPalpha (CCAAT/enhancer-binding protein alpha) and causes acute myelogenous leukemia. Alternatively spliced transcript variants have been found for this gene. [provided by RefSeq, Mar 2009]</p>

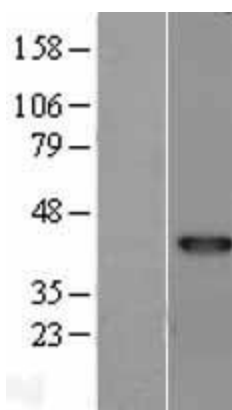
Product images:



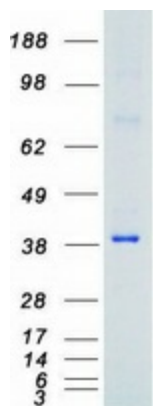
Circular map for RC201210



HEK293T cells were transfected with the pCMV6-ENTRY control (Cat# [PS100001], Left lane) or pCMV6-ENTRY TRIB2 (Cat# RC201210, Right lane) cDNA for 48 hrs and lysed. Equivalent amounts of cell lysates (5 ug per lane) were separated by SDS-PAGE and immunoblotted with anti-TRIB2 (Cat# [TA500510]). Positive lysates [LY402872] (100ug) and [LC402872] (20ug) can be purchased separately from OriGene.



Western blot validation of overexpression lysate (Cat# [LY402872]) using anti-DDK antibody (Cat# [TA50011-100]). Left: Cell lysates from untransfected HEK293T cells; Right: Cell lysates from HEK293T cells transfected with RC201210 using transfection reagent MegaTran 2.0 (Cat# [TT210002]).



Coomassie blue staining of purified TRIB2 protein (Cat# [TP301210]). The protein was produced from HEK293T cells transfected with TRIB2 cDNA clone (Cat# RC201210) using MegaTran 2.0 (Cat# [TT210002]).