

## Product datasheet for RC201207

### CCDC106 (NM\_013301) Human Tagged ORF Clone

#### Product data:

Product Type:	Expression Plasmids
Product Name:	CCDC106 (NM_013301) Human Tagged ORF Clone
Tag:	Myc-DDK
Symbol:	CCDC106
Synonyms:	HSU79303; ZNF581
Mammalian Cell Selection:	Neomycin
Vector:	pCMV6-Entry (PS100001)
E. coli Selection:	Kanamycin (25 ug/mL)
ORF Nucleotide Sequence:	>RC201207 ORF sequence Red=Cloning site Blue=ORF Green=Tags(s)

TTTTGTAATACGACTCACTATAGGGCGGCCGGAATTCGTCGACTGGATCCGGTACCGAGGAGATCTGCC  
GCC**CGATCGCC**

ATGAATGACCGGAGCAGTCGGAGGCGGACAATGAAGGACGATGAGACCTTCGAGATCTCCATTCCCTTCG  
ATGAGGCACCCACCTAGACCCACAGATCTTTACAGTCTGAGCCCTCTCGGAGAACTTCGAGGAGCC  
TCCGGAGGCTGCGTCTCCGCCCTGGCTCTGATGAACAGCGTCAAGACCCAGCTGCACATGGCTCTGGAG  
AGGAACCTCTGGCTGCAGAAGCGCATCGAGGACCTGGAGGAAGAGAGGGACTTCTCGCGTGCCAGCTGG  
ACAAATTCATCTCTTCTGCTCGGATGGAGGCAGAGGACACTGCCGGATGAAGCCTGGGCCAGGCGGAT  
GGAGGGGACAGCCGTGGTGGGGCTGGGGCGAGGCCCTCGGACCTGAGTCAGCAGCCTCCTCCCTCAGC  
GGAGCGTCCGAAGAAGGCAGTGCCAGTGAGAGGAGGCGGAGCAGAAGGAGGAGGTGCTAGTCGGAGGC  
GCTTTGGGAAGCCCAAGGCCCGGGAGAGGCAGCGAGTGAAGGACGCCGACGGGGTCTCTGCCGGTACAA  
GAAGATCCTGGGCACCTTCCAGAAGCTCAAGAGCATGTCGCGGGCCTTCGAGCACCACCGGTGGACAGG  
AACACCGTGGCGCTGACCACGCCATCGCCGAGCTGCTCATTGTGGCCCCGAGAAGCTGGCCGAGGTGG  
GCGAGTTCGACCCTCAAGGAGCGCTGCTCGAGTACTCCGCCGCTGCTTTCTGGCCCTGGACGACGA  
GACGCTCAAGAAGGTGCAGGCGCTCAAGAAGAGCAAGCTGCTGCTGCCCATCACCTACCGCTTCAAGCGG

**ACGCGT**ACGCGGCCGCTCGAGCAGAACTCATCTCAGAAGAGGATCTGGCAGCAAATGATATCCTGGATT  
ACAAGGATGACGACGATAAGGTTTAA



[View online »](#)

**Protein Sequence:** >RC201207 protein sequence  
Red=Cloning site Green=Tags(s)

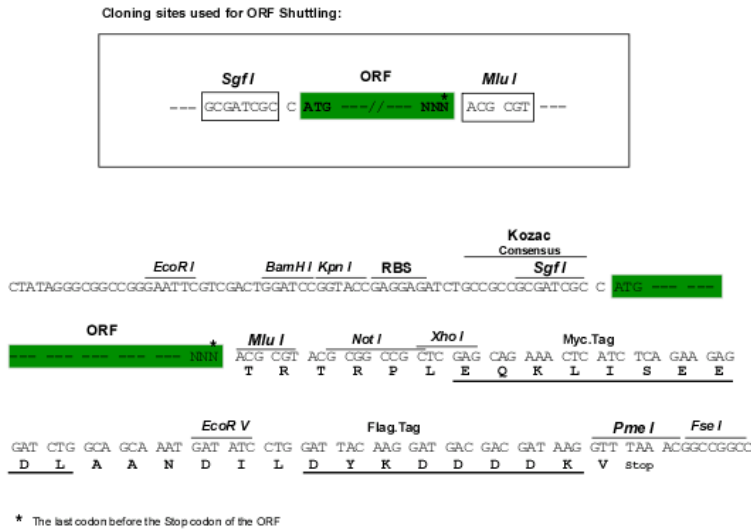
MNDRSSRRRTMKDDETFEISIPFDEAPHLDPQIFYSLSPSRRNFEEPPEAASSALALMNSVKTQLHMALE  
 RNSWLQKRIEDLEEERDFLRQLDKFISSARMEADHCRMKPGPRRMEGDSRGGAGGEASDPESAASSLS  
 GASEEGSASERRRQKQKGGASRRRFGKPKARERQVRKADAGVLCRYKKILGTFQKLKMSRAFEHHRVDR  
 NTVALTTPIAELLIVAPEKLAEVGFEFDP SKERLLEYSRRCFLALDDETLKKVQALKKSKLLLPITYRFKR

TRTRPLEQKLISEEDLAANDILDYKDDDDKV

**Chromatograms:** [https://cdn.origene.com/chromatograms/mk6409\\_b06.zip](https://cdn.origene.com/chromatograms/mk6409_b06.zip)

**Restriction Sites:** SgfI-MluI

**Cloning Scheme:**



**ACCN:** NM\_013301

**ORF Size:** 840 bp

**OTI Disclaimer:** The molecular sequence of this clone aligns with the gene accession number as a point of reference only. However, individual transcript sequences of the same gene can differ through naturally occurring variations (e.g. polymorphisms), each with its own valid existence. This clone is substantially in agreement with the reference, but a complete review of all prevailing variants is recommended prior to use. [More info](#)

**OTI Annotation:** This clone was engineered to express the complete ORF with an expression tag. Expression varies depending on the nature of the gene.

**Components:** The ORF clone is ion-exchange column purified and shipped in a 2D barcoded Matrix tube containing 10ug of transfection-ready, dried plasmid DNA (reconstitute with 100 ul of water).

**Reconstitution Method:**

1. Centrifuge at 5,000xg for 5min.
2. Carefully open the tube and add 100ul of sterile water to dissolve the DNA.
3. Close the tube and incubate for 10 minutes at room temperature.
4. Briefly vortex the tube and then do a quick spin (less than 5000xg) to concentrate the liquid at the bottom.
5. Store the suspended plasmid at -20°C. The DNA is stable for at least one year from date of shipping when stored at -20°C.

**Note:** Plasmids are not sterile. For experiments where strict sterility is required, filtration with 0.22um filter is required.

**RefSeq:** [NM\\_013301.2](#), [NP\\_037433.2](#)

**RefSeq Size:** 1993 bp

**RefSeq ORF:** 843 bp

**Locus ID:** 29903

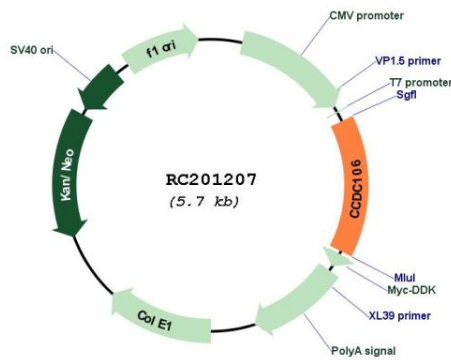
**UniProt ID:** [Q9BWC9](#)

**Cytogenetics:** 19q13.42

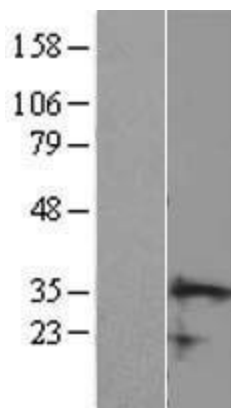
**MW:** 32 kDa

**Gene Summary:** Promotes the degradation of p53/TP53 protein and inhibits its transactivity.[UniProtKB/Swiss-Prot Function]

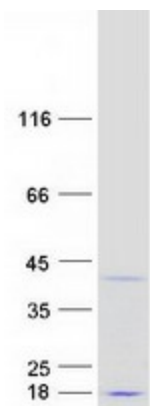
### Product images:



Circular map for RC201207



Western blot validation of overexpression lysate (Cat# [LY415675]) using anti-DDK antibody (Cat# [TA50011-100]). Left: Cell lysates from untransfected HEK293T cells; Right: Cell lysates from HEK293T cells transfected with RC201207 using transfection reagent MegaTran 2.0 (Cat# [TT210002]).



Coomassie blue staining of purified CCDC106 protein (Cat# [TP301207]). The protein was produced from HEK293T cells transfected with CCDC106 cDNA clone (Cat# RC201207) using MegaTran 2.0 (Cat# [TT210002]).