

Product datasheet for RC201206

Sigma1 receptor (SIGMAR1) (NM_005866) Human Tagged ORF Clone

Product data:

Product Type:	Expression Plasmids
Product Name:	Sigma1 receptor (SIGMAR1) (NM_005866) Human Tagged ORF Clone
Tag:	Myc-DDK
Symbol:	Sigma1 receptor
Synonyms:	ALS16; DSMA2; hSigmaR1; OPRS1; SIG-1R; sigma1R; SR-BP; SR-BP1; SRBP
Mammalian Cell Selection:	Neomycin
Vector:	pCMV6-Entry (PS100001)
E. coli Selection:	Kanamycin (25 ug/mL)
ORF Nucleotide Sequence:	>RC201206 ORF sequence Red=Cloning site Blue=ORF Green=Tags(s)

TTTTGTAATACGACTCACTATAGGGCGGCCGGAATTCGTCGACTGGATCCGGTACCGAGGAGATCTGCC
GCC**CGATCGCC**

ATGCAGTGGGCCGTGGCCGGCGTGGCGTGGGCCGCGCTGCTCCTGGCTGTCGCAGCGGTGCTGACCC
AGGTCGTCTGGCTCTGGCTGGGTACGCAGAGCTTCGTCTCCAGCGGAAGAGATAGCGCAGTTGGCGCG
GCAGTACGCTGGGCTGGACCACGAGCTGGCCTTCTCGTCTGATCGTGGAGCTGCGGCGGCTGCACCCA
GGCCACGTGCTGCCCGACGAGGAGCTGCAGTGGGTGTTCTGTAATGCGGGTGGCTGGATGGGCGCCATGT
GCCTTCTGCACGCTCGCTGTCCGAGTATGTGCTGCTCTCGGCACCGCCTTGGGCTCCCGCGGCCACTC
GGGGCGCTACTGGCTGAGATCTCGGATACCATCATCTCTGGCACCTCCACAGTGGAGAGAGGGCACC
ACCAAAAGTGAGGTCTTCTACCCAGGGGAGACGGTAGTACACGGGCTGGTGAGGCAACAGCTGTGGAGT
GGGGGCCAAACACATGGATGGTGGAGTACGGCCGGGGCGTCATCCCATCCACCCTGGCCTTCGCGCTGGC
CGACACTGTCTTACGACCCAGGACTTCCTCACCTCTTCTATACTCTTCGCTCCTATGCTCGGGGCCTC
CGGCTTGAGCTCACCACTACCTCTTGGCCAGGACCCT

ACGCGTACGCGGGCGCTCGAGCAGAACTCATCTCAGAAGAGGATCTGGCAGCAAATGATATCCTGGATT
ACAAGGATGACGACGATAAGGTTTAA



[View online »](#)

Protein Sequence: >RC201206 protein sequence
 Red=Cloning site Green=Tags(s)

MQWAVGRRWAWAALLLAVA AVL TQVVWLWLTQSFV FQREEIAQLARQYAGLDHELAFSRLIVELRRLHP
 GHVLPDEELQWVFVNAGGWGMAMCLLHASLSEYVLLFGTALGSRGHSGRYWAEISDTIISGTFHQWREGT
 TKSEVFPGETVVHGPGEATAVEWGPNTWMVEYGRGVIPSTLAFALADTVFSTQDFLTLFYTLRSYARGL
 RLELTTYLFGQDP

TRTRPLEQKLISEEDLAANDILDYKDDDDKV

Chromatograms: https://cdn.origene.com/chromatograms/mk6083_d01.zip

Restriction Sites: SgfI-MluI

Cloning Scheme:

Cloning sites used for ORF Shuttling:



* The last codon before the Stop codon of the ORF

ACCN: NM_005866

ORF Size: 669 bp

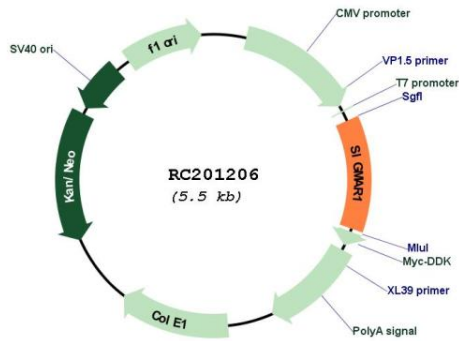
OTI Disclaimer: The molecular sequence of this clone aligns with the gene accession number as a point of reference only. However, individual transcript sequences of the same gene can differ through naturally occurring variations (e.g. polymorphisms), each with its own valid existence. This clone is substantially in agreement with the reference, but a complete review of all prevailing variants is recommended prior to use. [More info](#)

OTI Annotation: This clone was engineered to express the complete ORF with an expression tag. Expression varies depending on the nature of the gene.

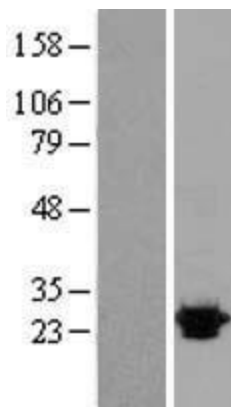
Components: The ORF clone is ion-exchange column purified and shipped in a 2D barcoded Matrix tube containing 10ug of transfection-ready, dried plasmid DNA (reconstitute with 100 ul of water).

Reconstitution Method:	<ol style="list-style-type: none">1. Centrifuge at 5,000xg for 5min.2. Carefully open the tube and add 100ul of sterile water to dissolve the DNA.3. Close the tube and incubate for 10 minutes at room temperature.4. Briefly vortex the tube and then do a quick spin (less than 5000xg) to concentrate the liquid at the bottom.5. Store the suspended plasmid at -20°C. The DNA is stable for at least one year from date of shipping when stored at -20°C.
RefSeq:	NM_005866.4
RefSeq Size:	1728 bp
RefSeq ORF:	672 bp
Locus ID:	10280
UniProt ID:	Q99720
Cytogenetics:	9p13.3
Domains:	ERG2_Sigma1R
Protein Families:	Druggable Genome, GPCR, Transmembrane
MW:	25.1 kDa
Gene Summary:	<p>This gene encodes a receptor protein that interacts with a variety of psychotomimetic drugs, including cocaine and amphetamines. The receptor is believed to play an important role in the cellular functions of various tissues associated with the endocrine, immune, and nervous systems. As indicated by its previous name, opioid receptor sigma 1 (OPRS1), the product of this gene was erroneously thought to function as an opioid receptor; it is now thought to be a non-opioid receptor. Mutations in this gene has been associated with juvenile amyotrophic lateral sclerosis 16. Alternative splicing of this gene results in transcript variants encoding distinct isoforms. [provided by RefSeq, Aug 2013]</p>

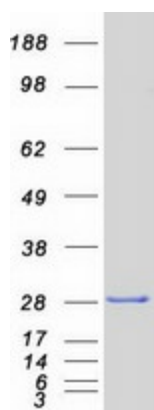
Product images:



Circular map for RC201206



Western blot validation of overexpression lysate (Cat# [LY401778]) using anti-DDK antibody (Cat# [TA50011-100]). Left: Cell lysates from untransfected HEK293T cells; Right: Cell lysates from HEK293T cells transfected with RC201206 using transfection reagent MegaTran 2.0 (Cat# [TT210002]).



Coomassie blue staining of purified SIGMAR1 protein (Cat# [TP301206]). The protein was produced from HEK293T cells transfected with SIGMAR1 cDNA clone (Cat# RC201206) using MegaTran 2.0 (Cat# [TT210002]).