

## Product datasheet for **RC201204**

### GM CSF Receptor alpha (CSF2RA) (NM\_172245) Human Tagged ORF Clone

#### Product data:

Product Type:	Expression Plasmids
Product Name:	GM CSF Receptor alpha (CSF2RA) (NM_172245) Human Tagged ORF Clone
Tag:	Myc-DDK
Symbol:	GM CSF Receptor alpha
Synonyms:	alphaGMR; CD116; CDw116; CSF2R; CSF2RAX; CSF2RAY; CSF2RX; CSF2RY; GM-CSF-R-alpha; GMCSFR; GMCSFR-alpha; GMR; GMR-alpha; SMDP4
Mammalian Cell Selection:	Neomycin
Vector:	pCMV6-Entry (PS100001)
E. coli Selection:	Kanamycin (25 ug/mL)



[View online »](#)

**ORF Nucleotide Sequence:**

>RC201204 ORF sequence  
 Red=Cloning site Blue=ORF Green=Tags(s)

TTTTGTAATACGACTCACTATAGGGCGGCCGGAATTCGTCGACTGGATCCGGTACCGAGGAGATCTGCC  
 GCCCGCATCGCC

ATGCTTCTCCTGGTGACAAGCCTTCTGCTCTGTGAGTTACCACACCCAGCATTCTCCTGATCCCAGAGA  
 AATCGGATCTGCGAACAGTGGCACCAGCCTCTAGTCTCAATGTGAGGTTTGACTCCAGGACGATGAATTT  
 AAGCTGGGACTGCCAAGAAAACACAACCTTCAGCAAGTGTTCCTAACTGACAAGAAGAAGAGAGTCGTG  
 GAACCCAGGCTCAGTAACAACGAATGTTCTGTCACATTTCTGAAATTTGTCTGCATGAAGGAGTCACAT  
 TTGAGGTTACGTGAATACTAGTCAAAGAGGATTTCAACAGAACTGCTTTATCCAAATTCAGGAAGGGA  
 GGGTACCCTGCTCAGAATTTCTCTGTTTCATCTACAATGCGGATTTAATGAACTGTACCTGGCGGAGG  
 GGTCCGACGGCCCCCGTACGTCCAGTATTTTTGTACATACGAACTCAAAGAGAAGGAGGGAGATCC  
 GGTGTCTTATTACATAAAGACTCAGGAACCCATGTGGGATGTCACCTGGATAACCTGTCAGGATTAAC  
 GTCTCGCAATTACTTTCTGGTTAACGGAACCCAGCCGAGAAATGGCATCCAATTTTATTGATTCATTTTG  
 GACACAAAAGAAAATAGAAGATTCAACCTCCAGCAATGTCACCGTACGTTGCAACACGACGCACTGCC  
 TCGTACGGTGAAACAGCCAGGACCTATCAGAAGCTGTCGTACCTGGACTTTCAGTACCAGCTGGACGT  
 CCACAGAAAGAATACCCAGCCTGGCAGGAAAACCTACTGATTAATGTTTCTGGTGATTTGGAAAATAGA  
 TACAATTTTCAAAGCTCTGAGCCAGAGCAAAACAGTGTGAAGATCAGAGCTGCAGACGTCGCCATCT  
 TGAATGGAGCTCCTGGAGTGAAGCCATTGAATTTGGTTCTGACGACGGGAACCTCGGCTCTGTGTACAT  
 TTATGTCTCCTAATCGTGGGAACCTTGTCTGTGGCATCGTCTCGGCTTCTCTTTAAAAGGTTCTT  
 AGGATACAGCGGCTGTTCCCGCCAGTCCACAGATCAAAGACAACTGAATGATAACCATGAGGTGGAAG  
 ACGAGATCATCTGGGAGGAATTCACCCAGAGGAAGGGAAGGCTACCGCGAAGAGGTCTTGACCGTGAA  
 GGAAATTACC

ACGCGTACGCGGCCGCTCGAGCAGAACTCATCTCAGAAGAGGATCTGGCAGCAATGATATCCTGGATT  
 ACAAGGATGACGACGATAAGGTTTAA

**Protein Sequence:**

>RC201204 protein sequence  
 Red=Cloning site Green=Tags(s)

MLLLVTSLLLCELPHPAFLLIPEKSDLRTVAPASSLNVRFDSTMNLSWDCQENTTFSKCFLTDKKNRVV  
 EPRLSNNECSCTFREICLHEGVTFEVHVNTSQRGFQKLLYPNSGREGTAAQNFSCFIYNADLMNCTWAR  
 GPTAPRDVQYFLYIRNSKRRREIRCPYYIQDSGTHVGHLDNL SGLTSRNYFLVNGTSREIGIQFFDSSL  
 DTKKIERFNPPSNVTVRCNTTHCLVRWKQPRTYQKLSYLDQYQLDVHRKNTQPGTENLLINVSQDLENR  
 YNFPSSPRAKHSVKIRAADVRIILNWSWSEAIEFGSDDGNLGSVYIYVLLIVGTLVCGIIVLGLFKRFL  
 RIQRLFPVPQIKDKLNDNHEVEDEIIWEEFTPEEGKGYREEVLTVKEIT

TRTRPLEQKLI SEEDLAANDILDYKDDDDKV

**Chromatograms:**

[https://cdn.origene.com/chromatograms/mk6084\\_g01.zip](https://cdn.origene.com/chromatograms/mk6084_g01.zip)

**Restriction Sites:**

Sgfl-Mlul

**Cloning Scheme:**

Cloning sites used for ORF Shutting:


**ACCN:** NM\_172245

**ORF Size:** 1200 bp

**OTI Disclaimer:** The molecular sequence of this clone aligns with the gene accession number as a point of reference only. However, individual transcript sequences of the same gene can differ through naturally occurring variations (e.g. polymorphisms), each with its own valid existence. This clone is substantially in agreement with the reference, but a complete review of all prevailing variants is recommended prior to use. [More info](#)

**OTI Annotation:** This clone was engineered to express the complete ORF with an expression tag. Expression varies depending on the nature of the gene.

**Components:** The ORF clone is ion-exchange column purified and shipped in a 2D barcoded Matrix tube containing 10ug of transfection-ready, dried plasmid DNA (reconstitute with 100 ul of water).

**Reconstitution Method:**

1. Centrifuge at 5,000xg for 5min.
2. Carefully open the tube and add 100ul of sterile water to dissolve the DNA.
3. Close the tube and incubate for 10 minutes at room temperature.
4. Briefly vortex the tube and then do a quick spin (less than 5000xg) to concentrate the liquid at the bottom.
5. Store the suspended plasmid at -20°C. The DNA is stable for at least one year from date of shipping when stored at -20°C.

**RefSeq:** [NM\\_172245.4](#)
**RefSeq Size:** 1831 bp

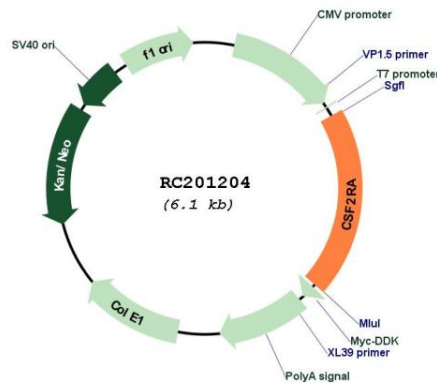
**RefSeq ORF:** 1203 bp

**Locus ID:** 1438

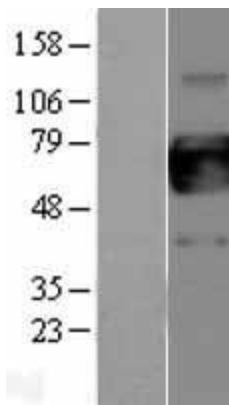
**UniProt ID:** [P15509](#)

<b>Cytogenetics:</b>	X;Y
<b>Protein Families:</b>	Druggable Genome, Secreted Protein, Transmembrane
<b>Protein Pathways:</b>	Cytokine-cytokine receptor interaction, Hematopoietic cell lineage, Jak-STAT signaling pathway, Pathways in cancer
<b>MW:</b>	46.2 kDa
<b>Gene Summary:</b>	The protein encoded by this gene is the alpha subunit of the heterodimeric receptor for colony stimulating factor 2, a cytokine which controls the production, differentiation, and function of granulocytes and macrophages. The encoded protein is a member of the cytokine family of receptors. This gene is found in the pseudoautosomal region (PAR) of the X and Y chromosomes. Multiple transcript variants encoding different isoforms have been found for this gene, with some of the isoforms being membrane-bound and others being soluble. [provided by RefSeq, Jul 2008]

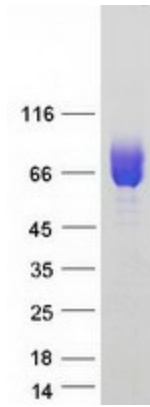
### Product images:



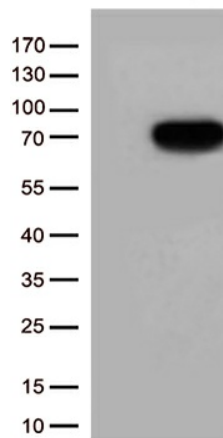
Circular map for RC201204



Western blot validation of overexpression lysate (Cat# [LY403538]) using anti-DDK antibody (Cat# [TA50011-100]). Left: Cell lysates from untransfected HEK293T cells; Right: Cell lysates from HEK293T cells transfected with [RC220607] using transfection reagent MegaTran 2.0 (Cat# [TT210002]).



Coomassie blue staining of purified CSF2RA protein (Cat# [TP301204]). The protein was produced from HEK293T cells transfected with CSF2RA cDNA clone (Cat# RC201204) using MegaTran 2.0 (Cat# [TT210002]).



HEK293T cells were transfected with the pCMV6-ENTRY control (Cat# [PS100001], Left lane) or pCMV6-ENTRY CSF2RA (Cat# RC201204, Right lane) cDNA for 48 hrs and lysed. Equivalent amounts of cell lysates (5 ug per lane) were separated by SDS-PAGE and immunoblotted with anti-CSF2RA (Cat# [TA812521])(1:500).