

## Product datasheet for RC201199

### UBE2I (NM\_194261) Human Tagged ORF Clone

#### Product data:

**Product Type:** Expression Plasmids  
**Product Name:** UBE2I (NM\_194261) Human Tagged ORF Clone  
**Tag:** Myc-DDK  
**Symbol:** UBE2I  
**Synonyms:** C358B7.1; P18; UBC9  
**Mammalian Cell Selection:** Neomycin  
**Vector:** pCMV6-Entry (PS100001)  
**E. coli Selection:** Kanamycin (25 ug/mL)  
**ORF Nucleotide Sequence:** >RC201199 ORF sequence  
 Red=Cloning site Blue=ORF Green=Tags(s)

TTTTGTAATACGACTCACTATAGGGCGGCCGGAATTCGTCGACTGGATCCGGTACCGAGGAGATCTGCC  
GCC**CGATCGCC**

ATGTCGGGGATCGCCCTCAGCAGACTCGCCAGGAGAGAAAGCATGGAGGAAAGACCACCCATTTGGTT  
TCGTGGCTGTCCCAACAAAAATCCCGATGGCAGCATGAACCTCATGAACGGGAGTGGCCATTCCAGG  
AAAGAAAGGGACTCCGTGGGAAGGAGGCTTGTTTAAACTACGGATGCTTTTCAAAGATGATTATCCATCT  
TCGCCACCAAAATGTAATTCGAACCACCATTATTTACCCGAATGTGTACCCTTCGGGGACAGTGTGCC  
TGTCATCTTAGAGGAGGACAAGGACTGGAGGCCAGCCATCACAATCAAACAGATCCTATTAGGAATACA  
GGAACCTCTAAATGAACCAATATCCAAGACCCAGCTCAAGCAGAGGCCTACACGATTTACTGCCAAAAC  
AGAGTGGAGTACGAGAAAAGGTCGAGCACAAGCCAAGAAGTTTGCGCCCTCA

**ACGCGT**ACGCGGCCGCTCGAGCAGAACTCATCTCAGAAGAGGATCTGGCAGCAAATGATATCCTGGATT  
ACAAGGATGACGACGATAAGGTTTAA

**Protein Sequence:** >RC201199 protein sequence  
 Red=Cloning site Green=Tags(s)  
 MSGIALSRLAQRKAWRKDHPFGFVAVPTKNPDGTMNLMNWECAIPGKKGTPWEGGLFKLRMLFKDDYPS  
 SPPKCKFEPPLFHPNVYPSGTVCLSILEEDKDWRAITIKQILLGIQELLNEPNIQDPAQAEAYTIYQCN  
 RVEYEKRVRAQAKKFAPS

**TR**TRPLEQKLISEEDLAANDILDYKDDDDKV

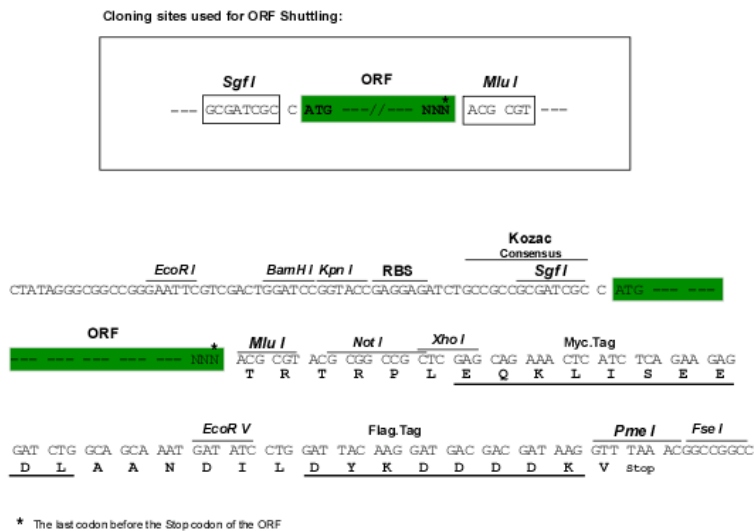
**Chromatograms:** [https://cdn.origene.com/chromatograms/mk6408\\_f07.zip](https://cdn.origene.com/chromatograms/mk6408_f07.zip)



[View online »](#)

Restriction Sites: SgfI-MluI

Cloning Scheme:



ACCN: NM\_194261

ORF Size: 474 bp

OTI Disclaimer: The molecular sequence of this clone aligns with the gene accession number as a point of reference only. However, individual transcript sequences of the same gene can differ through naturally occurring variations (e.g. polymorphisms), each with its own valid existence. This clone is substantially in agreement with the reference, but a complete review of all prevailing variants is recommended prior to use. [More info](#)

OTI Annotation: This clone was engineered to express the complete ORF with an expression tag. Expression varies depending on the nature of the gene.

Components: The ORF clone is ion-exchange column purified and shipped in a 2D barcoded Matrix tube containing 10ug of transfection-ready, dried plasmid DNA (reconstitute with 100 ul of water).

Reconstitution Method:

1. Centrifuge at 5,000xg for 5min.
2. Carefully open the tube and add 100ul of sterile water to dissolve the DNA.
3. Close the tube and incubate for 10 minutes at room temperature.
4. Briefly vortex the tube and then do a quick spin (less than 5000xg) to concentrate the liquid at the bottom.
5. Store the suspended plasmid at -20°C. The DNA is stable for at least one year from date of shipping when stored at -20°C.

RefSeq: [NM\\_194261.3](#)

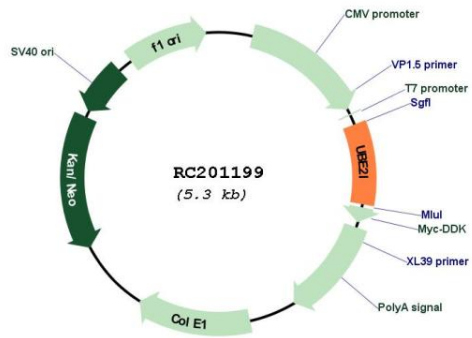
RefSeq Size: 2843 bp

RefSeq ORF: 477 bp

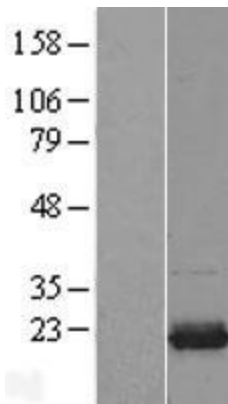
Locus ID: 7329

**UniProt ID:** [P63279](#)  
**Cytogenetics:** 16p13.3  
**Protein Pathways:** Ubiquitin mediated proteolysis  
**MW:** 18 kDa  
**Gene Summary:** The modification of proteins with ubiquitin is an important cellular mechanism for targeting abnormal or short-lived proteins for degradation. Ubiquitination involves at least three classes of enzymes: ubiquitin-activating enzymes, or E1s, ubiquitin-conjugating enzymes, or E2s, and ubiquitin-protein ligases, or E3s. This gene encodes a member of the E2 ubiquitin-conjugating enzyme family. Four alternatively spliced transcript variants encoding the same protein have been found for this gene. [provided by RefSeq, Jul 2008]

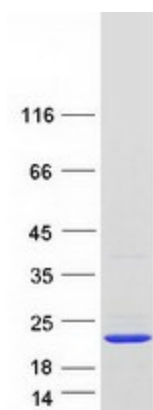
### Product images:



Circular map for RC201199



Western blot validation of overexpression lysate (Cat# [LY405115]) using anti-DDK antibody (Cat# [TA50011-100]). Left: Cell lysates from untransfected HEK293T cells; Right: Cell lysates from HEK293T cells transfected with [RC224182] using transfection reagent MegaTran 2.0 (Cat# [TT210002]).



Coomassie blue staining of purified UBE2I protein (Cat# [TP301199]). The protein was produced from HEK293T cells transfected with UBE2I cDNA clone (Cat# RC201199) using MegaTran 2.0 (Cat# [TT210002]).