

Product datasheet for RC201195

BCS1L (NM_004328) Human Tagged ORF Clone

Product data:

Product Type:	Expression Plasmids
Product Name:	BCS1L (NM_004328) Human Tagged ORF Clone
Tag:	Myc-DDK
Symbol:	BCS1L
Synonyms:	BCS; BCS1; BJS; FLNMS; GRACILE; h-BCS; h-BCS1; Hs.6719; MC3DN1; PTD
Mammalian Cell Selection:	Neomycin
Vector:	pCMV6-Entry (PS100001)
E. coli Selection:	Kanamycin (25 ug/mL)
ORF Nucleotide Sequence:	>RC201195 ORF sequence Red=Cloning site Blue=ORF Green=Tags(s)

TTTTGTAATACGACTCACTATAGGGCGGCCGGAATTCGTCGACTGGATCCGGTACCGAGGAGATCTGCC
GCC**CGATCGCC**

ATGCCACTTTCAGACTTTATTCTGGCTCTGAAGGACAATCCCTACTTTGGGGCTGGATTTGGGCTGGTGG
GTGTGGGCACAGCCCTGGCCCTGGCCCGGAAGGGTGTCCAACCTGGGCCTGGTGGCATTCCGGCGCCATTA
CATGATCACACTGGAAGTCCCTGCTCGAGACAGGAGCTATGCCTGGTTGCTTAGCTGGCTACCCGCCAC
AGTACCCGTAAGTACTCAGCACCTCAGTGTGAGACTTCGTACCTTCAGCATGAGAGTGGCCGATTTCCACTA
AGTTTGAATTTGTCCCGACCCCTGGAAACCATTTATCTGGTATCGGGGAAATGGATTCGGGTAGAACG
AAGTCGAGAGATGCAGATGATAGACTTGCAGACGGGACTCCTTGGGAATCTGTACCTTACCGCCCTG
GGCACTGACCGAAAGGTTTTCTCAACATCCTGGAGGAAGCTCGAGAGCTAGCCTTGCAGCAGGAGGAAG
GGAAGACCGTGATGTACACAGCTGTGGGCTCTGAATGGCGTCCCTTTGGCTATCCACGCCCGCGGAC
ACTGAATCTGTGGTTCTACAACAGGGTCTGGCTGACCGAATTGTGAGAGACGTCCAGGAATTCATCGAT
AACCCCAAGTGGTACACTGACAGAGGCATTCTTACAGACGTGGCTACCTGCTTTATGGGCCCTGGTT
GCGGAAAGAGCAGTTTTATCACAGCCCTGGCTGGGAACTGGAGCACAGCATCTGCCTGCTGAGCCTCAC
GGACTCCAGCCTCTCTGATGACCGACTCAACCACCTGCTGAGCGTGGCCCCGAGCAGAGCCTGGTACTC
CTGGAGGATGTGGATGCTGCTTTTCTCAGTCGAGACTTGGCTGTGGAGAACCAGTAAAGTACCAAGGCC
TAGGTCGCCTCACCTTCAGTGGACTGCTCAATGCCTTGGATGGTGTGGCTTCCACCGAGGCCGCATCGT
GTTTCATGACCACCAACCAGTTGACAGGCTGGACCCTGCCTGATACGCCCGGGCGAGTGGACCTGAAG
GAGTACGTGGGCTACTGCTCACACTGGCAGCTGACCCAGATGTTCCAGAGTTCTATCCAGGGCAGGCAC
CTTCTTAGCTGAGAAGTTTGCAGAATGTCCTTCGAGCTACAAACCAGATCAGTCTGCCAGGTGCA
GGGCTACTTCATGCTGTATAAAATGACCCTGTAGGGCAATTCACAATGCTGAGTCTCTGAGGAGG

ACGCGTACGCGGCCGCTCGAGCAGAACTCATCTCAGAAGAGGATCTGGCAGCAAATGATATCTGGATT
ACAAGGATGACGACGATAAGGTTTAA



[View online >](#)

Protein Sequence: >RC201195 protein sequence
Red=Cloning site Green=Tags(s)

MPLSDFILALKDNPYFGAGFGLVGVGTALALARKGVQLGLVAFRRHYMITLEVPARDRSYAWLLSWLTRH
 STRTQHL SVETSYLQHESGRISTKFEFVPSGNHFIWYRGKWIRVERSREMOMIDLQTGTPWESVTF TAL
 GTDRKVVFNILEEARELALQEEGKTVMYTAVGSEWRPFYPRRRRPLNSVVLQQGLADRIVRDVQEFID
 NPKWYTD RGI PYRRGYLLY GPPGCGKSSFIT ALAGELEHSICLLSLTDSSL SDDR LNHL LSVAPQQSLVL
 LEDVDA AFLSRDLAVENPVKYQGLGRLTF SGLLNALDGVASTE ARIVFMT TNHVDRLDPALIRPGRVDLK
 EYVGYCSHWLQTQMFQRFYPGQAPSLAENFAEHLVRATNQISPAQVQGYFMLYKNDPVGAIHNAESLRR

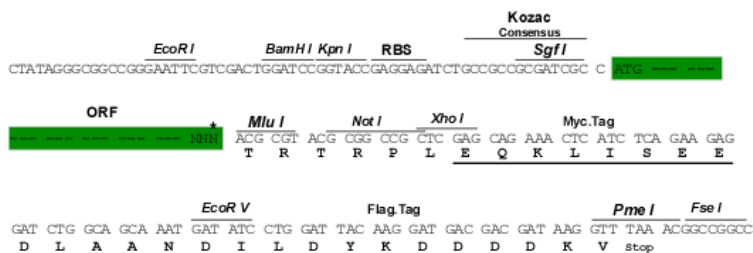
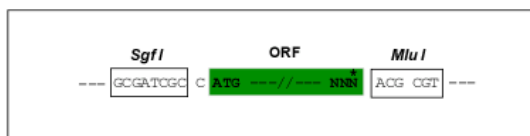
TRTRPLEQKLISEEDLAANDILDYKDDDDKV

Chromatograms: https://cdn.origene.com/chromatograms/mk6409_e08.zip

Restriction Sites: SgfI-MluI

Cloning Scheme:

Cloning sites used for ORF Shuttling:



* The last codon before the Stop codon of the ORF

ACCN: NM_004328

ORF Size: 1257 bp

OTI Disclaimer: The molecular sequence of this clone aligns with the gene accession number as a point of reference only. However, individual transcript sequences of the same gene can differ through naturally occurring variations (e.g. polymorphisms), each with its own valid existence. This clone is substantially in agreement with the reference, but a complete review of all prevailing variants is recommended prior to use. [More info](#)

OTI Annotation: This clone was engineered to express the complete ORF with an expression tag. Expression varies depending on the nature of the gene.

Components: The ORF clone is ion-exchange column purified and shipped in a 2D barcoded Matrix tube containing 10ug of transfection-ready, dried plasmid DNA (reconstitute with 100 ul of water).

Reconstitution Method:

1. Centrifuge at 5,000xg for 5min.
2. Carefully open the tube and add 100ul of sterile water to dissolve the DNA.
3. Close the tube and incubate for 10 minutes at room temperature.
4. Briefly vortex the tube and then do a quick spin (less than 5000xg) to concentrate the liquid at the bottom.
5. Store the suspended plasmid at -20°C. The DNA is stable for at least one year from date of shipping when stored at -20°C.

Note: Plasmids are not sterile. For experiments where strict sterility is required, filtration with 0.22um filter is required.

RefSeq: [NM_004328.5](#)

RefSeq Size: 1663 bp

RefSeq ORF: 1260 bp

Locus ID: 617

UniProt ID: [Q9Y276](#)

Cytogenetics: 2q35

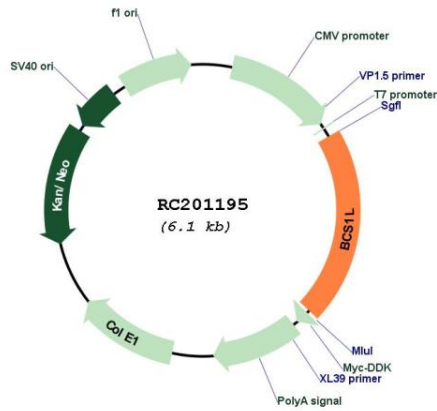
Domains: AAA

Protein Families: Druggable Genome

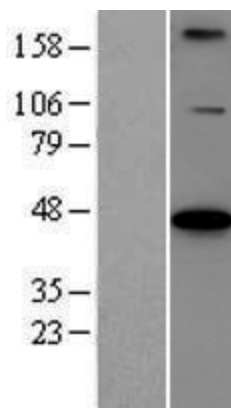
MW: 47.5 kDa

Gene Summary: This gene encodes a homolog of the *S. cerevisiae* bcs1 protein which is involved in the assembly of complex III of the mitochondrial respiratory chain. The encoded protein does not contain a mitochondrial targeting sequence but experimental studies confirm that it is imported into mitochondria. Mutations in this gene are associated with mitochondrial complex III deficiency and the GRACILE syndrome. Several alternatively spliced transcripts encoding two different isoforms have been described. [provided by RefSeq, Jan 2016]

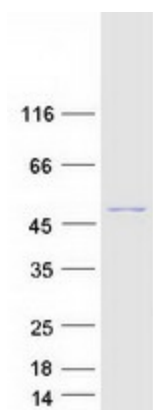
Product images:



Circular map for RC201195



Western blot validation of overexpression lysate (Cat# [LY421566]) using anti-DDK antibody (Cat# [TA50011-100]). Left: Cell lysates from untransfected HEK293T cells; Right: Cell lysates from HEK293T cells transfected with [RC213712] using transfection reagent MegaTran 2.0 (Cat# [TT210002]).



Coomassie blue staining of purified BCS1L protein (Cat# [TP301195]). The protein was produced from HEK293T cells transfected with BCS1L cDNA clone (Cat# RC201195) using MegaTran 2.0 (Cat# [TT210002]).