

Product datasheet for RC201194

GET3 (NM_004317) Human Tagged ORF Clone

Product data:

Product Type:	Expression Plasmids
Product Name:	GET3 (NM_004317) Human Tagged ORF Clone
Tag:	Myc-DDK
Symbol:	GET3
Synonyms:	ARSA-I; ARSA1; ASNA-I; ASNA1; TRC40
Mammalian Cell Selection:	Neomycin
Vector:	pCMV6-Entry (PS100001)
E. coli Selection:	Kanamycin (25 ug/mL)
ORF Nucleotide Sequence:	>RC201194 ORF sequence Red=Cloning site Blue=ORF Green=Tags(s)

TTTTGTAATACGACTCACTATAGGGCGGCCGGAATTCGTCGACTGGATCCGGTACCGAGGAGATCTGCC
GCC**CGATCGCC**

ATGGCGGCAGGGGTGGCCGGTGGGGGTTGAGGCAGAGGAGTTCGAAGATGCTCCTGATGTGGAGCCGC
TGGAGCCTACACTTAGCAACATCATCGAGCAGCGCAGCCTGAAGTGGATCTTCGTCGGGGCAAGGGTGG
TGTGGCAAGACCACCTGCAGCTGCAGCCTGGCAGTCCAGCTCTCAAGGGCGTGAGAGTGTCTGATC
ATCTCCACAGACCAGCACACAACATCTCAGATGCTTTTGACCAGAAGTCTCAAAGGTGCCTACCAAGG
TCAAAGGCTATGACAACCTCTTTGCTATGGAGATTGACCCAGCCTGGGCGTGGCGGAGCTGCCTGACGA
GTTCTTCGAGGAGGACAACATGCTGAGCATGGGCAAGAAGATGATGCAGGAGGCCATGAGCGCATTCCC
GGCATCGATGAGGCCATGAGCTATGCCGAGGTCATGAGGCTGGTGAAGGGCATGAACTTCTCGGTGGTGG
TATTTGACACGGCACCCACGGGCCACACCTGAGGCTGCTCAACTTCCCCACCATCGTGGAGCGGGGCT
GGGCCGGCTTAGCAGATCAAGAACCAGATCAGCCCTTTCATCTCACAGATGTGCAACATGCTGGCCCTG
GGGACATGAACGCAGACCAGCTGGCCTCAAGCTGGAGGAGACGCTGCCCGTATCCGCTCAGTCAGCG
AACAGTCAAGGACCCTGAGCAGACAACCTTTCATCTGCGTATGCATTGCTGAGTTCCTGTCCCTGTATGA
GACAGAGAGGCTGATCCAGGAGCTGGCCAAGTGAAGATTGACACACACAATAAATTGTCAACCAGCTC
GTCTTCCCCGACCCGAGAAGCCCTGCAAGATGTGTGAGGCCCGTCAAGATCCAGGCCAAGTATCTGG
ACCAGATGGAGGACCTGTATGAAGACTTCCACATCGTGAAGCTGCCGCTGTTACCCCATGAGGTGGGGG
GGCAGACAAGGTCAACACCTTCTCGGCCCTCCTCCTGGAGCCCTACAAGCCCCCAGTGCCAG

ACGCGTACGCGGCCGCTCGAGCAGAAACTCATCTCAGAAGAGGATCTGGCAGCAATGATATCCTGGATT
ACAAGGATGACGACGATAAGGTTTAA



[View online »](#)

Protein Sequence: >RC201194 protein sequence
Red=Cloning site Green=Tags(s)

MAAGVAGWGVEAEFEADPDVEPLEPTLSNIEQRSLKWIFVGGKGGVGKTTCCSCSLAVQLSKGRESVLI
 ISTDPAHNISDAFDQKFSKVPTKVKGYNLFAMEIDPSLGV AELPDEFF EEDNMLSMGKMMQEAMSAFP
 GIDEAMSYAEVMRLVKGMNFSVVVFDAPTGHTLRLNFP TIVERGLGRMLQIKNQISPFISQMCNMLGL
 GDMNADQLASKLEETLPVIRSVSEQFKDPEQTTFCVVCIAEFLSLYETERLIQELAKCKIDTHNIIVNQL
 VFPDPEKPCMKCEARHKIQAKYLDQMEDLYEDFHIVKLP LLLPHEVRGADKVNTFSALLLEPYKPPSAQ

TRTRPLEQKLISEEDLAANDILDYKDDDDKV

Chromatograms: https://cdn.origene.com/chromatograms/mk6084_b03.zip

Restriction Sites: SgfI-MluI

Cloning Scheme:



ACCN: NM_004317

ORF Size: 1044 bp

OTI Disclaimer: The molecular sequence of this clone aligns with the gene accession number as a point of reference only. However, individual transcript sequences of the same gene can differ through naturally occurring variations (e.g. polymorphisms), each with its own valid existence. This clone is substantially in agreement with the reference, but a complete review of all prevailing variants is recommended prior to use. [More info](#)

OTI Annotation: This clone was engineered to express the complete ORF with an expression tag. Expression varies depending on the nature of the gene.

Components: The ORF clone is ion-exchange column purified and shipped in a 2D barcoded Matrix tube containing 10ug of transfection-ready, dried plasmid DNA (reconstitute with 100 ul of water).

Reconstitution Method:

1. Centrifuge at 5,000xg for 5min.
2. Carefully open the tube and add 100ul of sterile water to dissolve the DNA.
3. Close the tube and incubate for 10 minutes at room temperature.
4. Briefly vortex the tube and then do a quick spin (less than 5000xg) to concentrate the liquid at the bottom.
5. Store the suspended plasmid at -20°C. The DNA is stable for at least one year from date of shipping when stored at -20°C.

RefSeq: [NM_004317.4](#)

RefSeq Size: 1298 bp

RefSeq ORF: 1047 bp

Locus ID: 439

UniProt ID: [O43681](#)

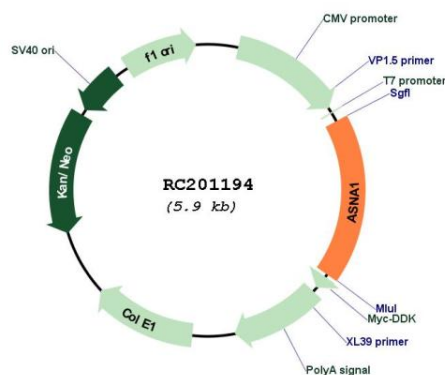
Cytogenetics: 19p13.13

Domains: ArsA_ATPase

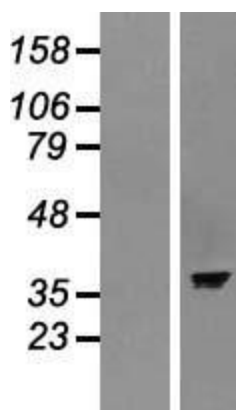
MW: 38.8 kDa

Gene Summary: This gene represents the human homolog of the bacterial *arsA* gene, encoding the arsenite-stimulated ATPase component of the arsenite transporter responsible for resistance to arsenicals. This protein is also a central component of a transmembrane domain (TMD) recognition complex (TRC) that is involved in the post-translational delivery of tail-anchored (TA) proteins from the cytosol to the endoplasmic reticulum (ER). It recognizes and selectively binds the TMD of TA proteins in the cytosol, and delivers them to the ER for insertion. [provided by RefSeq, Oct 2011]

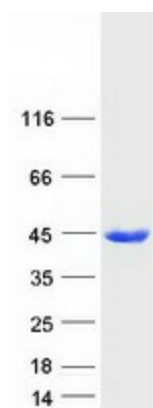
Product images:



Circular map for RC201194



Western blot validation of overexpression lysate (Cat# [LY418062]) using anti-DDK antibody (Cat# [TA50011-100]). Left: Cell lysates from untransfected HEK293T cells; Right: Cell lysates from HEK293T cells transfected with RC201194 using transfection reagent MegaTran 2.0 (Cat# [TT210002]).



Coomassie blue staining of purified GET3 protein (Cat# [TP301194]). The protein was produced from HEK293T cells transfected with GET3 cDNA clone (Cat# RC201194) using MegaTran 2.0 (Cat# [TT210002]).