

Product datasheet for RC201185

TIPRL (NM_001031800) Human Tagged ORF Clone

Product data:

Product Type:	Expression Plasmids
Product Name:	TIPRL (NM_001031800) Human Tagged ORF Clone
Tag:	Myc-DDK
Symbol:	TIPRL
Synonyms:	TIP; TIP41; TIPRL1
Mammalian Cell Selection:	Neomycin
Vector:	pCMV6-Entry (PS100001)
E. coli Selection:	Kanamycin (25 ug/mL)
ORF Nucleotide Sequence:	>RC201185 ORF sequence Red=Cloning site Blue=ORF Green=Tags(s)

TTTTGTAATACGACTCACTATAGGGCGCCGGGAATTCGTCGACTGGATCCGGTACCGAGGAGATCTGCC
GCC**CGATCGCC**

ATGATGATCCACGGCTTCCAGAGCAGCCACCGGGATTTCTGCTTCGGGCCCTGGAAGCTGACGGCGTCCA
AGACCCACATCATGAAGTCGGCGGATGTGGAGAAATTAGCCGATGAATTACATATGCCATCTCTCCCTGA
AATGATGTTTGGAGACAACGTTTTAAGAATCCAGCATGGGTCTGGCTTTGGAATTGAGTTCAATGCTACA
GATGCGTTAAGATGTGTAACAACACTACCAAGGAATGCTTAAAGTGGCCTGTGCTGAAGAGTGCCAAGAAA
GCAGGACGGAGGGTGAACACTCCAAGAGGTTATTAACCATATGATTGGACCTATACAACAGATTATAA
GGGAACCTTACTTGGAGAATCTCTTAAGTTAAAGTTGTACCTACAACAGATCATATAGATACAGAAAAA
TTGAAAGCCAGAGAACAGATTAAGTTTTTTGAAGAAGTTCCTCTTTTGGAGATGAACCTCATGATCATG
GAGTTTCAAGCCTGAGTGTGAAGATTCCTGGTGGCGGGCACCTG

ACGCGTACGCGGCCGCTCGAGCAGAACTCATCTCAGAAGAGGATCTGGCAGCAAATGATATCCTGGATT
ACAAGGATGACGACGATAAGGTTTAA

Protein Sequence:	>RC201185 protein sequence Red=Cloning site Green=Tags(s)
-------------------	--

MMIHGFQSSHRDFCFGPWKLTASKTHIMKSADVEKLADELHMPSLPEMMFGDNVLRIQHSGFGIEFNAT
DALRCVNNYQGMLKVACAEWQESRTEGEHSKEVIKPYDWTYTTDYKGTLLGESLKLKVVPPTDHDIDTEK
LKAREQIKFFEEVLLFEDELHDHGVSSLVKIPGGHL

TRTRPLEQKLISEEDLAANDILDYKDDDDKV

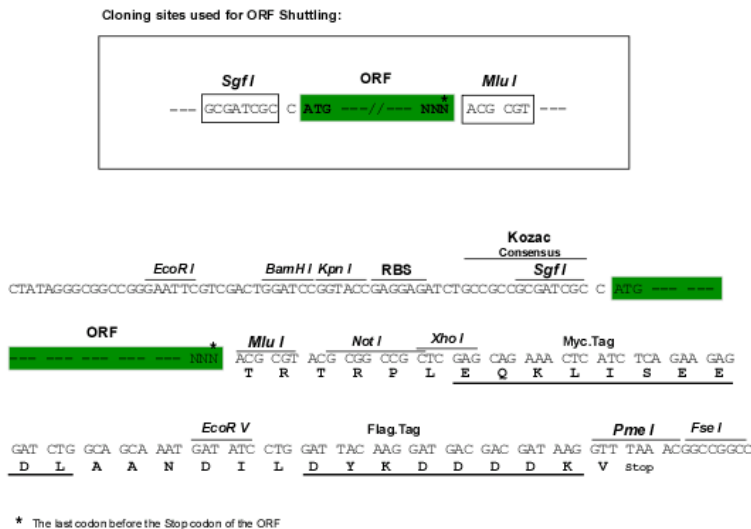
Chromatograms:	https://cdn.origene.com/chromatograms/mk6419_h08.zip
----------------	---



[View online »](#)

Restriction Sites: SgfI-MluI

Cloning Scheme:



ACCN: NM_001031800

ORF Size: 534 bp

OTI Disclaimer: The molecular sequence of this clone aligns with the gene accession number as a point of reference only. However, individual transcript sequences of the same gene can differ through naturally occurring variations (e.g. polymorphisms), each with its own valid existence. This clone is substantially in agreement with the reference, but a complete review of all prevailing variants is recommended prior to use. [More info](#)

OTI Annotation: This clone was engineered to express the complete ORF with an expression tag. Expression varies depending on the nature of the gene.

Components: The ORF clone is ion-exchange column purified and shipped in a 2D barcoded Matrix tube containing 10ug of transfection-ready, dried plasmid DNA (reconstitute with 100 ul of water).

Reconstitution Method:

1. Centrifuge at 5,000xg for 5min.
2. Carefully open the tube and add 100ul of sterile water to dissolve the DNA.
3. Close the tube and incubate for 10 minutes at room temperature.
4. Briefly vortex the tube and then do a quick spin (less than 5000xg) to concentrate the liquid at the bottom.
5. Store the suspended plasmid at -20°C. The DNA is stable for at least one year from date of shipping when stored at -20°C.

RefSeq: [NM_001031800.3](#)

RefSeq Size: 954 bp

RefSeq ORF: 537 bp

Locus ID: 261726

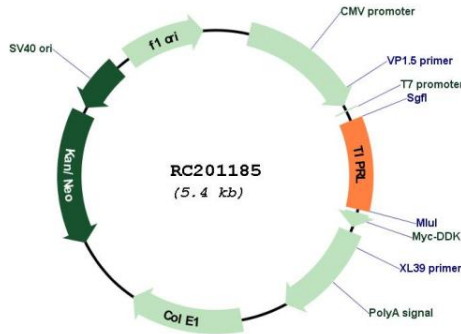
UniProt ID: [O75663](#)

Cytogenetics: 1q24.2

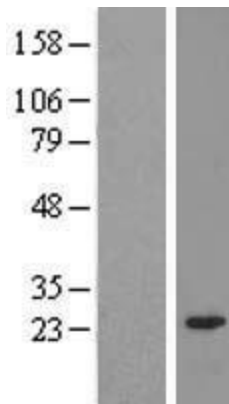
MW: 20.2 kDa

Gene Summary: TIPRL is an inhibitory regulator of protein phosphatase-2A (PP2A) (see PPP2CA; MIM 176915), PP4 (see PPP4C; MIM 602035), and PP6 (see PPP6C; MIM 612725) (McConnell et al., 2007 [PubMed 17384681]).[supplied by OMIM, Nov 2010]

Product images:



Circular map for RC201185



Western blot validation of overexpression lysate (Cat# [LY422192]) using anti-DDK antibody (Cat# [TA50011-100]). Left: Cell lysates from untransfected HEK293T cells; Right: Cell lysates from HEK293T cells transfected with RC201185 using transfection reagent MegaTran 2.0 (Cat# [TT210002]).