

Product datasheet for RC201182

LDB1 (NM_003893) Human Tagged ORF Clone

Product data:

Product Type:	Expression Plasmids
Product Name:	LDB1 (NM_003893) Human Tagged ORF Clone
Tag:	Myc-DDK
Symbol:	LDB1
Synonyms:	CLIM-2; CLIM2; LDB-1; NLI
Mammalian Cell Selection:	Neomycin
Vector:	pCMV6-Entry (PS100001)
E. coli Selection:	Kanamycin (25 ug/mL)
ORF Nucleotide Sequence:	>RC201182 ORF sequence Red=Cloning site Blue=ORF Green=Tags(s)

TTTTGTAATACGACTCACTATAGGGCGGCCGGAATTCGTCGACTGGATCCGGTACCGAGGAGATCTGCC
GCC**CGATCGCC**

ATGCTGGATAGGGATGTGGGCCAACTCCCATGTATCCGCCTACATACCTGGAGCCAGGGATTGGGAGGC
ACACACCATATGGCAACCAAAGTACTACAGAATATTTGAGCTTAACAAACGGCTTCAGAAGTGGACAGA
GGAGTGTGACAACTCTCTGGTGGGATGCATTCACGACTGAGTTCTTTGAGGATGATGCCATGTTGACCATC
ACTTTCTGCCTGGAGGATGGACCAAAGAGATATACCATTGGCCGGACCCTGATCCCACGCTACTTCCGCA
GCATCTTTGAGGGGGTGTACGGAGCTGTACTATGTTCTTAAGCACCCCAAGGAGGCATTCCACAGCAA
CTTTGTGTCCCTCGACTGTGACCAGGGCAGCATGGTGACCAGCATGGCAAGCCCATGTTACCCAGGTG
TGTGTGGAGGGCCGGTTGTACCTGGAGTTCATGTTTGACGACATGATGCGGATAAAGACGTGGCACTTCA
GCATCCGGCAGCACCGAGAGCTCATCCCCGCAGCATCCTTGCCATGCATGCCAAGACCCCCAGATGTT
GGATCAGCTCTCCAAAACATCACTCGGTGTGGCTGTCCAATCCACTCTCAACTACCTCCGACTCTGT
GTGATACTCGAGCCCATGCAAGAGCTCATGTACGCCACAAGACCTACAGCCTCAGCCCCGCGACTGCC
TCAAGACCTGCCTTTCCAGAAGTGGCAGCGCATGGTAGCACCCCTGCGGAGCCACACGTCAGCAGCC
CAGCAAACGGCGGAAACGGAAGATGTACGGGGCAGCACCATGAGCTCTGGTGGTGGCAACCAACAAC
AGCAACAGCAAGAAGAAGAGCCAGCTAGCACCTCGCCCTCAGCCAGGTACCTGATGTGTGGTGG
TGGGGGAGCCACCCCTGATGGGCGGGGAGTTCGGGGACGAGGACGAGAGGCTCATCACCCGCTGGAGAA
CACCCAGTTTGACGCAGCCAACGGCATTGACGACGAGGACAGCTTTAACAACCTCCCTGCACTGGGCGCC
AACAGCCCTGGAACAGCAAGCCTCCGTCCAGCCAAGAAAGCAAATCGGAGAACCCACGTCACAGGCT
CCCAG

ACGCGTACGCGGCCGCTCGAGCAGAAAACCTCATCTCAGAAGAGGATCTGGCAGCAAATGATATCCTGGATT
ACAAGGATGACGACGATAAGGTTTAA



[View online »](#)

Protein Sequence: >RC201182 protein sequence
Red=Cloning site Green=Tags(s)

MLDRDVGPTMPYPPTYLEPGIGRHTPYGNQTDYRIFELNKRLQNWTEECDNLWDAFTTEFFEDDAMLTITFCLEDGPKRYTIGRTLIPRYFRSIFEGGATELYYVLKHPKEAFHSNFVSLDCDQGSMTVQH GKPMFTQV CVEGRLYLEFMFDDMMRIKTWHFSIRQHRELIPRSILAMHAQDPQMLDQLSKNITRCLSNSTLNYLRLCVILEPMQELMSRHKTYSLSPRDCLKTCLFQKWQRMVAPPAEPTRQQPSKRKRKRKMSGGSTMSSGGGNTNNSNSKKSFASTFALSSQVPDVMVVGEP TLMGGFEGDEDERLITRLENTQF DAANGIDDEDSFNNSPALGANSPWNSKPPSSQESKSENPTSQASQ

TRTRPLEQKLISEEDLAANDILDYKDDDDKV

Chromatograms: https://cdn.origene.com/chromatograms/mk6152_g09.zip

Restriction Sites: SgfI-MluI

Cloning Scheme:



ACCN: NM_003893

ORF Size: 1125 bp

OTI Disclaimer: The molecular sequence of this clone aligns with the gene accession number as a point of reference only. However, individual transcript sequences of the same gene can differ through naturally occurring variations (e.g. polymorphisms), each with its own valid existence. This clone is substantially in agreement with the reference, but a complete review of all prevailing variants is recommended prior to use. [More info](#)

OTI Annotation: This clone was engineered to express the complete ORF with an expression tag. Expression varies depending on the nature of the gene.

Components: The ORF clone is ion-exchange column purified and shipped in a 2D barcoded Matrix tube containing 10ug of transfection-ready, dried plasmid DNA (reconstitute with 100 ul of water).

Reconstitution Method:

1. Centrifuge at 5,000xg for 5min.
2. Carefully open the tube and add 100ul of sterile water to dissolve the DNA.
3. Close the tube and incubate for 10 minutes at room temperature.
4. Briefly vortex the tube and then do a quick spin (less than 5000xg) to concentrate the liquid at the bottom.
5. Store the suspended plasmid at -20°C. The DNA is stable for at least one year from date of shipping when stored at -20°C.

RefSeq: [NM_003893.5](#)

RefSeq Size: 2305 bp

RefSeq ORF: 1128 bp

Locus ID: 8861

UniProt ID: [Q86U70](#)

Cytogenetics: 10q24.32

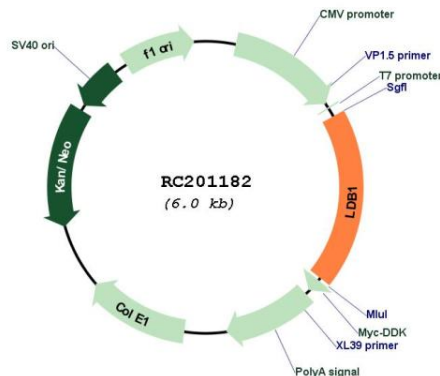
Domains: LIM_bind

Protein Families: Transcription Factors

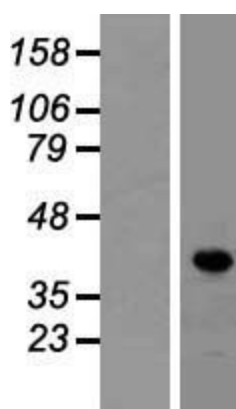
MW: 42.8 kDa

Gene Summary: Binds to the LIM domain of a wide variety of LIM domain-containing transcription factors. May regulate the transcriptional activity of LIM-containing proteins by determining specific partner interactions. Plays a role in the development of interneurons and motor neurons in cooperation with LHX3 and ISL1. Acts synergistically with LHX1/LIM1 in axis formation and activation of gene expression. Acts with LMO2 in the regulation of red blood cell development, maintaining erythroid precursors in an immature state (By similarity). [UniProtKB/Swiss-Prot Function]

Product images:



Circular map for RC201182



Western blot validation of overexpression lysate (Cat# [LY418367]) using anti-DDK antibody (Cat# [TA50011-100]). Left: Cell lysates from untransfected HEK293T cells; Right: Cell lysates from HEK293T cells transfected with RC201182 using transfection reagent MegaTran 2.0 (Cat# [TT210002]).