

## Product datasheet for **RC201177**

### **ENT1 (SLC29A1) (NM\_001078177) Human Tagged ORF Clone**

#### **Product data:**

Product Type:	Expression Plasmids
Product Name:	ENT1 (SLC29A1) (NM_001078177) Human Tagged ORF Clone
Tag:	Myc-DDK
Symbol:	ENT1
Synonyms:	ENT1
Mammalian Cell Selection:	Neomycin
Vector:	pCMV6-Entry (PS100001)
E. coli Selection:	Kanamycin (25 ug/mL)



[View online »](#)

**ORF Nucleotide Sequence:**

>RC201177 representing NM\_001078177  
 Red=Cloning site Blue=ORF Green=Tags(s)

TTTTGTAATACGACTCACTATAGGGCGGCCGGGAATTCGTCGACTGGATCCGGTACCGAGGAGATCTGCC  
 GCC**CGCATCGCC**

ATGACAACCAAGTACCAGCCTCAGGACAGATACAAAGCTGTCTGGCTTATCTTTCATGCTGGGTCTGG  
 GAACGCTGCTCCCGTGAATTTTTTCATGACGGCCACTCAGTATTTACAAAACCGCCTGGACATGTCCCA  
 GAATGTGTCTTGGTCACTGCTGAAGTGAAGGACGCCAGGCGTCAGCCGCCCTGCAGCACCCCTTG  
 CCTGAGCGGAAGTCTCTCAGTGCATCTTCAACAATGTCATGACCCTATGTGCCATGCTGCCCTGCTGT  
 TATTCACCTACCTCAACTCCTTCTGCATCAGAGGATCCCCAGTCCGTACGGATCCTGGGCAGCCTGGT  
 GGCCATCTGCTGGTGTCTGATCACTGCCATCCTGGTGAAGGTGCAGCTGGATGCTCTGCCCTCTTT  
 GTCATCACCATGATCAAGATCGTCTCATTAAATCATTGGTCCATCCTGCAGGGCAGCCTGTTGGTC  
 TGGCTGGCCTTCTGCCTGCCAGCTACACGGCCCCATCATGAGTGGCCAGGGCCTAGCAGGCTTCTTTGC  
 CTCGGTGGCCATGATCTGCGCTATTGCCAGTGGCTCGGAGCTATCAGAAAGTGCCTTCGGCTACTTTATC  
 ACAGCCTGTGCTGTTATCATTTTTGACCATCATCTGTTACCTGGGCTGCCCGCCTGGAATTCTACCGCT  
 ACTACCAGCAGCTCAAGCTTGAAGGACCCGGGAGCAGGAGACCAAGTTGGACCTCATTAGCAAAGGAGA  
 GGAGCCAAGAGCAGGCAAGAGGAATCTGGAGTTTCAGTCTCCAAGTCTCAGCCACCAATGAAAGCCAC  
 TCTATCAAAGCCATCCTGAAAAATCTCAGTCTGGCTTTCTCTGTCTGCTTACTTCACTATACCA  
 TTGGGATGTTCCAGCCGTGACTGTTGAGGTCAAGTCCAGCATCGCAGGCAGCAGCACCTGGGAACGTTA  
 CTTTCTTCTGTGCTGTTCTTACTTTCAATATCTTTGACTGTTGGCCGGAGCCTCACAGCTGTA  
 TTCATGTGGCTGGGAAGGACAGCCGCTGGCTGCCAAGCCTGGTGTGGCCGGCTGGTGTGTGCCAC  
 TGCTGCTGTGCAACATTAAGCCCCGCCCTACCTGACTGTGGTCTTCGAGCAGCATGCCTGGTTCAT  
 CTTCTTTCATGGCTGCCTTTGCCTTCTCCAACGGCTACCTCGCCAGCCTCTGCATGTGCTTCGGGCCAAG  
 AAAGTGAAGCCAGCTGAGGCAGAGACCGCAGGAGCCATCATGGCCTTCTTCTGTGTCTGGTCTGGCAC  
 TGGGGCTGTTTTCTCTTCTGTTCCGGGAATTGTG

**ACGCGT**ACGCGGCCGCTCGAGCAGAAACTCATCTCAGAAGAGGATCTGGCAGCAAATGATATCCTGGATT  
 ACAAGGATGACGACGATAAGGTTTAA

**Protein Sequence:**

>RC201177 representing NM\_001078177  
 Red=Cloning site Green=Tags(s)

MTTSHQPQDRYKAVWLIFFMLGLGTLPLWNFFMTATQYFTNRLDMSQNVSLVTAELSKDAQASAAPAAPL  
 PERNLSAIFNNVMTLCAMLPLLLFTYLNFLHQRIPQSVRILGSLVAILLVFLITAILVKVQLDALPFF  
 VITMIKIVLINSFGAILQGSFLGLAGLLPASYTAPIMSGQLAGFFASVAMICAIASGSELSAFAFYFI  
 TACAVIDIITIIICYLGLPRLEFYRYQQQLKEGPEQETKLDLISKGEPRAGKEESGVSVSNSQPTNESH  
 SIKAILKNI SVLAFSVCFIFTITIGMFPVAVTEVKSSIAGSSTWERYFIPVSCFLTFNIFDWLGRSLTAV  
 FMWPGKDSRWLPSLVLARLVFVPLLLLCNIKPRRYLTVVFEHDAWFIFMAAFASNGYLASLTCMCFGPK  
 KVKPAEAETAGAIMAFFLCLGLALGAVFSFLFRAIV

**TR**TRPLEQKLISEEDLAANDILDYKDDDDKV

**Chromatograms:**

[https://cdn.origene.com/chromatograms/mg2704\\_e01.zip](https://cdn.origene.com/chromatograms/mg2704_e01.zip)

**Restriction Sites:**

Sgfl-Mlul

**Cloning Scheme:**


**ACCN:** NM\_001078177

**ORF Size:** 1368 bp

**OTI Disclaimer:** Due to the inherent nature of this plasmid, standard methods to replicate additional amounts of DNA in E. coli are highly likely to result in mutations and/or rearrangements. Therefore, OriGene does not guarantee the capability to replicate this plasmid DNA. Additional amounts of DNA can be purchased from OriGene with batch-specific, full-sequence verification at a reduced cost. Please contact our customer care team at [custsupport@origene.com](mailto:custsupport@origene.com) or by calling 301.340.3188 option 3 for pricing and delivery.

The molecular sequence of this clone aligns with the gene accession number as a point of reference only. However, individual transcript sequences of the same gene can differ through naturally occurring variations (e.g. polymorphisms), each with its own valid existence. This clone is substantially in agreement with the reference, but a complete review of all prevailing variants is recommended prior to use. [More info](#)

**OTI Annotation:** This clone was engineered to express the complete ORF with an expression tag. Expression varies depending on the nature of the gene.

**Components:** The ORF clone is ion-exchange column purified and shipped in a 2D barcoded Matrix tube containing 10ug of transfection-ready, dried plasmid DNA (reconstitute with 100 ul of water).

**Reconstitution Method:**

1. Centrifuge at 5,000xg for 5min.
2. Carefully open the tube and add 100ul of sterile water to dissolve the DNA.
3. Close the tube and incubate for 10 minutes at room temperature.
4. Briefly vortex the tube and then do a quick spin (less than 5000xg) to concentrate the liquid at the bottom.
5. Store the suspended plasmid at -20°C. The DNA is stable for at least one year from date of shipping when stored at -20°C.

**Note:** Plasmids are not sterile. For experiments where strict sterility is required, filtration with 0.22um filter is required.

**RefSeq:** [NM\\_001078177.2](#)

**RefSeq Size:** 2503 bp

**RefSeq ORF:** 1371 bp

**Locus ID:** 2030

**UniProt ID:** [Q99808](#)

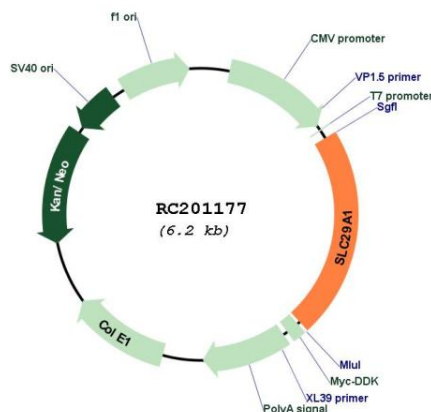
**Cytogenetics:** 6p21.1

**Protein Families:** Transmembrane

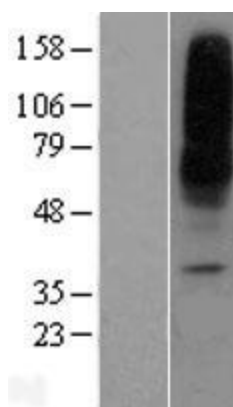
**MW:** 50 kDa

**Gene Summary:** This gene is a member of the equilibrative nucleoside transporter family. The gene encodes a transmembrane glycoprotein that localizes to the plasma and mitochondrial membranes and mediates the cellular uptake of nucleosides from the surrounding medium. The protein is categorized as an equilibrative (as opposed to concentrative) transporter that is sensitive to inhibition by nitrobenzylthioinosine (NBMPR). Nucleoside transporters are required for nucleotide synthesis in cells that lack de novo nucleoside synthesis pathways, and are also necessary for the uptake of cytotoxic nucleosides used for cancer and viral chemotherapies. Multiple alternatively spliced variants, encoding the same protein, have been found for this gene. [provided by RefSeq, Jul 2008]

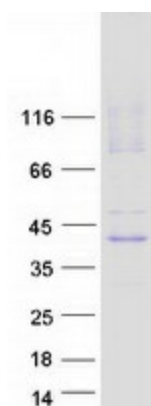
### Product images:



Circular map for RC201177



Western blot validation of overexpression lysate (Cat# [LY421500]) using anti-DDK antibody (Cat# [TA50011-100]). Left: Cell lysates from untransfected HEK293T cells; Right: Cell lysates from HEK293T cells transfected with RC201177 using transfection reagent MegaTran 2.0 (Cat# [TT210002]).



Coomassie blue staining of purified SLC29A1 protein (Cat# [TP301177]). The protein was produced from HEK293T cells transfected with SLC29A1 cDNA clone (Cat# RC201177) using MegaTran 2.0 (Cat# [TT210002]).