

Product datasheet for **RC201174**

ZNF205 (NM_001042428) Human Tagged ORF Clone

Product data:

Product Type:	Expression Plasmids
Product Name:	ZNF205 (NM_001042428) Human Tagged ORF Clone
Tag:	Myc-DDK
Symbol:	ZNF205
Synonyms:	RhitH; Zfp13; ZNF210
Mammalian Cell Selection:	Neomycin
Vector:	pCMV6-Entry (PS100001)
E. coli Selection:	Kanamycin (25 ug/mL)



[View online »](#)

ORF Nucleotide Sequence:

>RC201174 ORF sequence
 Red=Cloning site Blue=ORF Green=Tags(s)

TTTTGTAATACGACTCACTATAGGGCGGCCGGAATTCGTCGACTGGATCCGGTACCGAGGAGATCTGCC
 GCC**CGGATCGCC**

ATGCTGCAGACGGCGGAGGCATCCAGGACACCCAGGACAAGGAGACACCCCGGAGGTTCCAGATCGTG
 GACATCCTCATCAGGAAATGCCTTCTAAGCTGGGGAGGCGGTACCTTCAGGGGACGCTCAGGAGTCACT
 GCACATTAAGATGGAGCCGAAGAGCCACACTCCGAGGGGCATCGCAGGAGGATGGGGCTCAAGGTGCC
 TGGGGCTGGGCACCCCTAAGTCACGGCTTAAGGAGAAAGCTCTCTTCTGCCTGGCGGAGCCCTCCCT
 CCCCCGGATCCCGTGTCTTCCGAGAGGGGAGGACCAGAGACCGGCAGATGGTGCAGCGCTCTCAC
 TGCCTGGTCCCAGATGCCAGTACTTTCGAGGATGTGGCCTTGTACCTCTCCCGGAGGAGTGGGGACGG
 CTGGACCACAGCAGCAGAATTCTACAGGATGTCTGCAGAAGAAAAATGGGTGTACTGGGCTTTC
 CCTTCAGCAGGCTTTCTGGGCCCTCAAGCGCACGGCAAGGGTGAAGCCTCGGGCTCCAGCCGGCAGGC
 AGGAGATGAGAAGGAGTGGAGAGCGCGTGCACAGGAGCCGTCGAGGTGGGGCAGAGGTCAGACCTCA
 TCCGTGGCAGCCCTTGGGAATGTGAAGCCCTTCAGAACCAGGGCAGGGAGTCCAGTGGGGCGTCCCGC
 AGTGCGCGCAGGAAGCAGCCTGCGGCCGGAGCTCAGGGCCGGCCAAAGACTCCGGGCAGCCGGCTGAGCC
 AGATCGCACCCCGGATGCAGCTCCGCCAGACCCAGTCCACGGAGCCCGAGGATACCGCGTCCCGGAG
 AAGCCCAACGAGGAGGAGAAGGGCGCCCGGAGAGTGGCAGGAGGGCCTGGCCCTGACAGTGAAGTGG
 GCAGGAAGAGTACCGGTGCGAGCAGTGCAGCAAGGGCTTCAGCTGGCACTCGCACCTGGTGACGCACCG
 GCGCACGCACAGGGCGAGAAGCCCTACGCTGCACTGACTGCGGAAGCGCTTCGGCCGACGCTCGCAC
 CTCATCCAGCACCAGATCATCCACAGGGCGAGAAGCCCTACACTGCCCCGCTGCCGGAAGAGCTTCA
 GCCACCACTCCACGCTGATTACGACACAGCGCATCCACACCGGAGAGAAGCCCTACGTTGCGGCGCTG
 CGCCAAGCGCTTACCCGCGCTCGGACTTGGTACCCACAGGGCACCCACAGGGCGCCAAGCCGCAC
 AAGTGCCCATCTGCGCCAAGTGCTTACGCGAGGCTCGGCGTGTAGTACCCACAGCGCACCCACACTG
 GGGTCAAGCCCTATCCGTGCCCGAGTGCAGCAAGTGCTTCAAGCAGCGTTCACACTCATCGGCACAA
 CCGCACACACAGGCGAGAAGCCCTACACTGCCTCGACTGCGGCAAGAGCTTCAAGCAGACTCGCAC
 CTCACCGCGCACAGCGCACCCACCGTGGCGTGCAGCCCTACGCTGCCCCGTTGTGCGGCAAGAGCTTCA
 GCCGGCGCTCAACTGCACCGGCAGAGAAGATCCACACACCGGGCCCAAGGCCCTGGCCATGCTGAT
 GCTGGGGCGGGCGGGGGGCTCTGGCCACACCCCAACCGCTCCACC

ACGCGTACGCGGCGGCTCGAGCAGAAACTCATCTCAGAAGAGGATCTGGCAGCAAATGATATCCTGGATT
 ACAAGGATGACGACGATAAGGTTTAA

Protein Sequence:

>RC201174 protein sequence
 Red=Cloning site Green=Tags(s)

MSADGGGIQDTQDKETPPEVPDRGHPHQEMPSKLGAVPSGDAQESLHIKMEPEEPHSEGASQEDGAQGA
 WGWAPLSHGSKEKALFLPGGALPSRIPVLSREGRTDRQMAAALLTAWSQMPVTFEDVALYL SREEWGR
 LDHTQQNFYRDVQLQKNGLSLGFPFSRPFWAPQAHGKGEASGSSRQAGDEKEWRGACTGAVEVQQRVQTS
 SVAALGNVVPFRTRAGRQWVQCAQEAACGRSSGPAKDSGQPAEPDRTPDAAPPDPSPTPEQYRVP
 KPNEEEKGAPESGEEGLAPDSEVGRKSYRCEQCGKGFVSHSLVTHRRHTGKPYACTDCGKRFGRSSH
 LIQHQLIHTGKPYTCPACRKSFSHSTLIQHQLIHTGKPYVCDRCAKRFTRRSDLVTHQGTHTGAKPH
 KCPICAKCFTQSSALVTHQRTHGVKPYPCPECGKCFSQRSNLIAHNRHTGKPYHCLDCGKSFSSSH
 LTAHQRTHRGVRYACPLCGKFSRRSNLHRHEKIHHTGPKALAMLMLGAAAAGALATPPPAPT

TRTRPLEQKLISEEDLAANDILDYKDDDDKV

Chromatograms:

https://cdn.origene.com/chromatograms/mk6572_g06.zip

Restriction Sites:

Sgfl-Mlul

Cloning Scheme:


ACCN: NM_001042428

ORF Size: 1662 bp

OTI Disclaimer: The molecular sequence of this clone aligns with the gene accession number as a point of reference only. However, individual transcript sequences of the same gene can differ through naturally occurring variations (e.g. polymorphisms), each with its own valid existence. This clone is substantially in agreement with the reference, but a complete review of all prevailing variants is recommended prior to use. [More info](#)

OTI Annotation: This clone was engineered to express the complete ORF with an expression tag. Expression varies depending on the nature of the gene.

Components: The ORF clone is ion-exchange column purified and shipped in a 2D barcoded Matrix tube containing 10ug of transfection-ready, dried plasmid DNA (reconstitute with 100 ul of water).

Reconstitution Method:

1. Centrifuge at 5,000xg for 5min.
2. Carefully open the tube and add 100ul of sterile water to dissolve the DNA.
3. Close the tube and incubate for 10 minutes at room temperature.
4. Briefly vortex the tube and then do a quick spin (less than 5000xg) to concentrate the liquid at the bottom.
5. Store the suspended plasmid at -20°C. The DNA is stable for at least one year from date of shipping when stored at -20°C.

RefSeq: [NM_001042428.1](#), [NP_001035893.1](#)

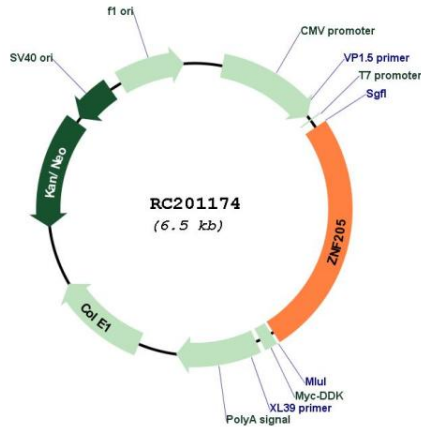
RefSeq Size: 2009 bp

RefSeq ORF: 1665 bp

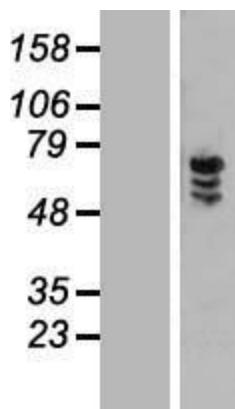
Locus ID: 7755

UniProt ID: [O95201](#)

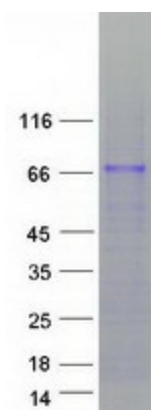
Cytogenetics: 16p13.3
Protein Families: Transcription Factors
MW: 60.6 kDa
Gene Summary: May be involved in transcriptional regulation.[UniProtKB/Swiss-Prot Function]

Product images:


Circular map for RC201174



Western blot validation of overexpression lysate (Cat# [LY418666]) using anti-DDK antibody (Cat# [TA50011-100]). Left: Cell lysates from untransfected HEK293T cells; Right: Cell lysates from HEK293T cells transfected with [RC214738] using transfection reagent MegaTran 2.0 (Cat# [TT210002]).



Coomassie blue staining of purified ZNF205 protein (Cat# [TP301174]). The protein was produced from HEK293T cells transfected with ZNF205 cDNA clone (Cat# RC201174) using MegaTran 2.0 (Cat# [TT210002]).