

Product datasheet for **RC201170**

TIP49A (RUVBL1) (NM_003707) Human Tagged ORF Clone

Product data:

Product Type:	Expression Plasmids
Product Name:	TIP49A (RUVBL1) (NM_003707) Human Tagged ORF Clone
Tag:	Myc-DDK
Symbol:	TIP49A
Synonyms:	ECP-54; ECP54; INO80H; NMP 238; NMP238; PONTIN; Pontin52; RVB1; TIH1; TIP49; TIP49A
Mammalian Cell Selection:	Neomycin
Vector:	pCMV6-Entry (PS100001)
E. coli Selection:	Kanamycin (25 ug/mL)



[View online »](#)

ORF Nucleotide Sequence:

>RC201170 ORF sequence
 Red=Cloning site Blue=ORF Green=Tags(s)

TTTTGTAATACGACTCACTATAGGGCGGCCGGAATTCGTCGACTGGATCCGGTACCGAGGAGATCTGCC
 GCC**CGCATCGCC**

ATGAAGATTGAGGAGTGAAGAGCACTACGAAGACGCAGCGCATCGCCTCCACAGCCACGTGAAAGGGC
 TGGGGCTGGACGAGAGCGCTTGGCCAAGCAGGCGCCTCAGGGCTTGTGGGCCAGGAGAACCGCGGAGA
 GGCATGTGGCGTCATAGTAGAATTAATCAAAGCAAGAAAATGGCTGGAAGAGCTGTCTTGTGGCAGGA
 CCTCCTGGAAGTGGCAAGACAGCTCTGGCTCTGGCTATTGCTCAGGAGCTGGGTAGTAAGTCCCCTTCT
 GCCCAATGGTGGGAGTGAAGTTTACTCAACTGAGATCAAGAAGACAGAGGTGCTGATGGAGAATTCCG
 CAGGGCCATTGGGCTGCGAATAAAGGAGACCAAGGAAGTTTATGAAGGTGAAGTCACAGAGCTAACTCCG
 TGTGAGACAGAGAATCCCATGGGAGGATATGGCAAACCATTAGCCATGTGATCATAGGACTCAAAACAG
 CCAAAGGAACCAACAGTTGAACTGGACCCAGCATTGTTTGAAGTTTGCAGAAAGAGCGAGTAGAAGC
 TGGAGATGTGATTACATTGAAGCCAACAGTGGGGCCGTGAAGAGGCAGGGCAGGTGTGATACCTATGCC
 ACAGAATTCGACCTTGAAGCTGAAGAGTATGTCCCTTGCACAAAAGGGGATGTGCACAAAAGAAAGAAA
 TCATCCAAGATGTGACCTTGCATGACTTGGATGTGGCTAATGCGCGGCCCCAGGGGGGACAGATATCCT
 GTCCATGATGGGCCAGCTAATGAAGCCAAAGAAGACAGAAATCACAGACAAACTTCGAGGGGAGATTAAT
 AAGGTGGTGAACAAGTACATCGACCAGGCATTGCTGAGCTGGTCCCAGGTGTGCTGTTTGTGATGAGG
 TCCACATGCTGGACATTGAGTGTTCACCTACCTGCACCGCGCCCTGGAGTCTTCTATCGTCCCATCGT
 CATCTTTGCATCCAACCGAGGCAACTGTGTCATCAGAGGCACTGAGGACATCACATCCCCTCACGGCATC
 CCTCTTGACCTTCTGGACCGAGTGTGATAATCCGGACCATGCTGTATACTCCACAGGAAATGAAACAGA
 TCATTAATAATCCGTGCCAGACGGAAGGAATCAACATCAGTGAGGAGGCACTGAACCACCTGGGGGAGAT
 TGGCACCAAGACCACACTGAGGTACTCAGTGCAGCTGCTGACCCCGCCAACCTTGCTTAAATCAAC
 GGAAGGACAGCATTGAGAAAGAGCATGTCGAAGAGATCAGTGAACCTTTCTATGATGCCAAGTCTCCG
 CCAAAATCCTGGCTGACCAGCAGGATAAGTACATGAAG

ACGCGTACGCGGCCGCTCGAGCAGAACTCATCTCAGAAGAGGATCTGGCAGCAAATGATATCCTGGATT
 ACAAGGATGACGACGATAAGGTTTAA

Protein Sequence:

>RC201170 protein sequence
 Red=Cloning site Green=Tags(s)

MKIEEVKSTTKTQRIASHSHVKLGLDESGLAKQAASGLVGQENAREACGVIVELIKSKKMAGRAVLLAG
 PPGTGKTALALAIQELGSKVPFCPMVGSEVYSTEIKKTEVLMENFRRAIGLRIKETKEVYEGEVELTP
 CETENPMGGYGKTI SHVIIGLKTAKGTKQLKLDPSIFESLQKERVEAGDVIYIEANSGAVKRQGRCDTYA
 TEFDLEAEEYVPLPKGDVHKKKEIIQDVTLHDLVDANARPQGGQDILSMMGQLMKPKKTEITDKLRGEIN
 KVVNKYIDQGI AELVPGVLFVDEVHMLDIECFYLRHRALESSIAPIVIFASNRGNCVIRGTEDITSPHGI
 PLDLLDRVMIIRTMLYTPQEMKQIIKIRAQTEGINISEEALNHLGEIGTKTTLRYSVQLLTPANLLAKIN
 GKDSIEKEHVVEISELFDYAKSSAKILADQQDKYMK

TRTRPLEQKLISEEDLAANDILDYKDDDDKV

Chromatograms:

https://cdn.origene.com/chromatograms/mk6588_f06.zip

Restriction Sites:

Sgfl-Mlul

Cloning Scheme:


ACCN: NM_003707

ORF Size: 1368 bp

OTI Disclaimer: The molecular sequence of this clone aligns with the gene accession number as a point of reference only. However, individual transcript sequences of the same gene can differ through naturally occurring variations (e.g. polymorphisms), each with its own valid existence. This clone is substantially in agreement with the reference, but a complete review of all prevailing variants is recommended prior to use. [More info](#)

OTI Annotation: This clone was engineered to express the complete ORF with an expression tag. Expression varies depending on the nature of the gene.

Components: The ORF clone is ion-exchange column purified and shipped in a 2D barcoded Matrix tube containing 10ug of transfection-ready, dried plasmid DNA (reconstitute with 100 ul of water).

Reconstitution Method:

1. Centrifuge at 5,000xg for 5min.
2. Carefully open the tube and add 100ul of sterile water to dissolve the DNA.
3. Close the tube and incubate for 10 minutes at room temperature.
4. Briefly vortex the tube and then do a quick spin (less than 5000xg) to concentrate the liquid at the bottom.
5. Store the suspended plasmid at -20°C. The DNA is stable for at least one year from date of shipping when stored at -20°C.

RefSeq: [NM_003707.3](#)

RefSeq Size: 1785 bp

RefSeq ORF: 1371 bp

Locus ID: 8607

UniProt ID: [Q9Y265](#)

Cytogenetics: 3q21.3

Domains: AAA

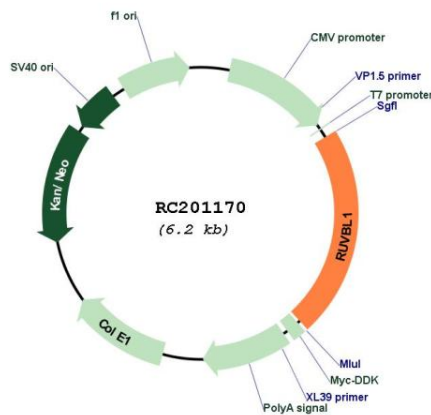
Protein Families: Stem cell - Pluripotency, Transcription Factors

Protein Pathways: Wnt signaling pathway

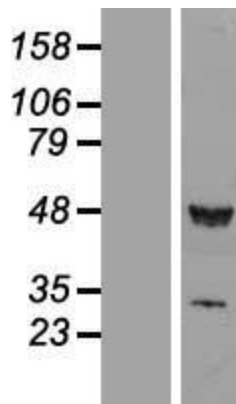
MW: 50.2 kDa

Gene Summary: This gene encodes a protein that has both DNA-dependent ATPase and DNA helicase activities and belongs to the ATPases associated with diverse cellular activities (AAA+) protein family. The encoded protein associates with several multisubunit transcriptional complexes and with protein complexes involved in both ATP-dependent remodeling and histone modification. Alternate splicing results in multiple transcript variants. [provided by RefSeq, Jan 2016]

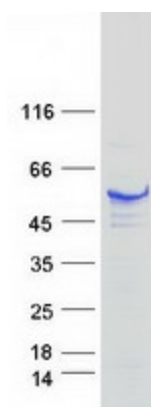
Product images:



Circular map for RC201170



Western blot validation of overexpression lysate (Cat# [LY418487]) using anti-DDK antibody (Cat# [TA50011-100]). Left: Cell lysates from untransfected HEK293T cells; Right: Cell lysates from HEK293T cells transfected with RC201170 using transfection reagent MegaTran 2.0 (Cat# [TT210002]).



Coomassie blue staining of purified RUVBL1 protein (Cat# [TP301170]). The protein was produced from HEK293T cells transfected with RUVBL1 cDNA clone (Cat# RC201170) using MegaTran 2.0 (Cat# [TT210002]).