

Product datasheet for RC201160L2

Syntenin 2 (SDCBP2) (NM_080489) Human Tagged Lenti ORF Clone

Product data:

Product Type:	Expression Plasmids
Product Name:	Syntenin 2 (SDCBP2) (NM_080489) Human Tagged Lenti ORF Clone
Tag:	mGFP
Symbol:	Syntenin 2
Synonyms:	SITAC; SITAC18; ST-2; ST2
Mammalian Cell Selection:	None
Vector:	pLenti-C-mGFP (PS100071)
E. coli Selection:	Chloramphenicol (34 ug/mL)
ORF Nucleotide Sequence:	The ORF insert of this clone is exactly the same as(RC201160).
Restriction Sites:	SgfI-MluI
Cloning Scheme:	

Cloning sites used for ORF Shuttling:



* The last codon before the Stop codon of the ORF.

ACCN:	NM_080489
ORF Size:	876 bp



[View online »](#)

OTI Disclaimer: Due to the inherent nature of this plasmid, standard methods to replicate additional amounts of DNA in E. coli are highly likely to result in mutations and/or rearrangements. Therefore, OriGene does not guarantee the capability to replicate this plasmid DNA. Additional amounts of DNA can be purchased from OriGene with batch-specific, full-sequence verification at a reduced cost. Please contact our customer care team at custsupport@origene.com or by calling 301.340.3188 option 3 for pricing and delivery.

The molecular sequence of this clone aligns with the gene accession number as a point of reference only. However, individual transcript sequences of the same gene can differ through naturally occurring variations (e.g. polymorphisms), each with its own valid existence. This clone is substantially in agreement with the reference, but a complete review of all prevailing variants is recommended prior to use. [More info](#)

OTI Annotation: This clone was engineered to express the complete ORF with an expression tag. Expression varies depending on the nature of the gene.

Components: The ORF clone is ion-exchange column purified and shipped in a 2D barcoded Matrix tube containing 10ug of transfection-ready, dried plasmid DNA (reconstitute with 100 ul of water).

Reconstitution Method:

1. Centrifuge at 5,000xg for 5min.
2. Carefully open the tube and add 100ul of sterile water to dissolve the DNA.
3. Close the tube and incubate for 10 minutes at room temperature.
4. Briefly vortex the tube and then do a quick spin (less than 5000xg) to concentrate the liquid at the bottom.
5. Store the suspended plasmid at -20°C. The DNA is stable for at least one year from date of shipping when stored at -20°C.

RefSeq: [NM_080489.3](#)

RefSeq Size: 1475 bp

RefSeq ORF: 879 bp

Locus ID: 27111

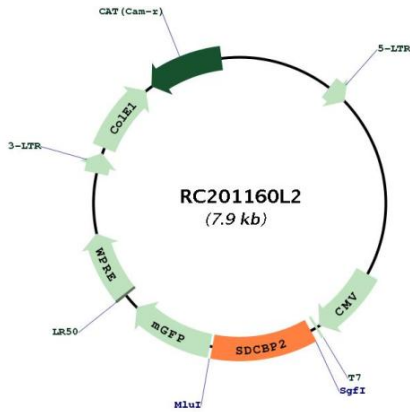
UniProt ID: [Q9H190](#)

Cytogenetics: 20p13

MW: 31.4 kDa

Gene Summary: The protein encoded by this gene contains two class II PDZ domains. PDZ domains facilitate protein-protein interactions by binding to the cytoplasmic C-terminus of transmembrane proteins, and PDZ-containing proteins mediate cell signaling and the organization of protein complexes. The encoded protein binds to phosphatidylinositol 4, 5-bisphosphate (PIP2) and plays a role in nuclear PIP2 organization and cell division. Alternatively spliced transcript variants encoding multiple isoforms have been observed for this gene. Read-through transcription also exists between this gene and the upstream FKBP1A (FK506 binding protein 1A, 12kDa) gene, as represented in GeneID:100528031. [provided by RefSeq, Sep 2011]

Product images:



Circular map for RC201160L2